



FUTURE *of* *the* **DOCTORATE**

Riga, 28 - 29 May 2015



FUTURE of the **DOCTORATE** - Riga, 28 - 29 May 2015

The European/International Joint PhD in Social Representations and Communication:
a pioneering institutional experience of
triple “I” (international, intersectoral, interdisciplinary)
networked joint doctorate



Annamaria Silvana de Rosa

Sapienza University of Rome – ITALY



www.europhd.eu



In order to reply to the **first question**

by the session moderator Paul HARRIS,
- Policy Officer at EAC Unit B3 Innovation in education, EIT and MSCA -

“What was the biggest challenge for you while organizing the joint PhD (legal, financial, languages, etc.)?”

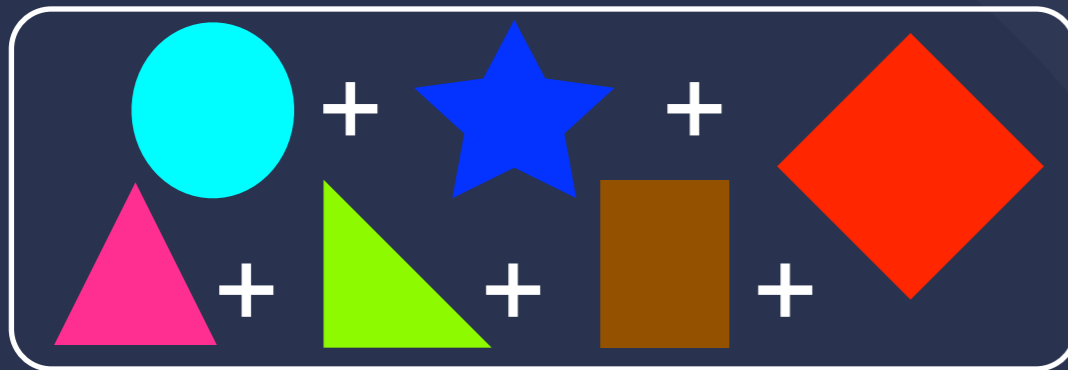
- we will mention very briefly the policies adopted by our program, clearly distinguishing joint Phd from collaborative doctorates from the collaborative doctorates.
- we will briefly describe its progressive development since its pioneering designing and building-up period 1992-1995, even in advance and later in synergy with the stimulating role of the EC projects within 4th, 5 , 6th and 7th Framework Program and other initiatives promoted by International Universities Associations, like the European University Association.

TWO ADMINISTRATIVE PROCEDURAL MODELS

=

TWO INTERNATIONAL DOCTORATE MODELS

**"Decentralized" model
for administrative
procedures**



**"Centralized" model
for administrative procedures**



**Cumulative or Additional Model:
International Collaborative Doctorate**

=

Sum of various institutions in different countries, each with their own local administrative procedures and didactic organization of doctorate.

**International mobility as only added value:
a local Ph.D. plus joint certificate for international mobility**

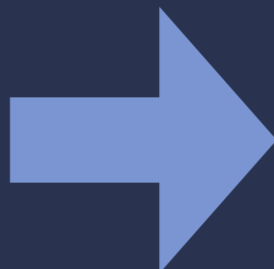
**Integrated Jointly Established
Multilateral doctoral model**

=

A joint International doctorate commits institutions to integrating all phases of planning, implementation and award of a joint diploma: Candidate recruitment, selection, admission, enrollment at the network level is just the first step and is no less important than the training in international settings to earn a joint diploma



"Joint" Diploma: the end starts from the beginning





The "musts" for establishing

ADMINISTRATION and MANAGEMENT

Collaborative Internationalized Doctorate

Joint European/International Doctorate



network building-up and Inter-Institutional Agreement	<p>doctoral programme at home institution co-operating with other doctorates at abroad H.E. institutions on the basis of bilateral or multilateral Inter-Institutional Agreement signed by the Rectors: start-up at different time and diverse history of each doctorate is possible at different collaborating Institutions</p>	<p>institutionalised scientific networks of H.E. institutions (open to collaboration with entrepreneurial partners and research centres) in at least 3 countries. The building-up of the institutionalised network - jointly created through a bottom-up approach brought to the top - is part of the common history of the programme, based on a single multilateral Inter-Institutional Agreement jointly established by all the participating institutions and signed by their Rectors.</p>
management structure	<p>each collaborative doctorate adopts the management structure in agreement with the Regulations at its own Institution (at least a program director and a representative for each collaborating doctorates should be identified)</p>	<p>jointly established management structure (Programme Director, Coordinator, Executive Committee, Recruitment Board, Scientific Supervisory Board, Training staff, International Evaluation Board, Quality control committee, etc.)</p>
infrastructures and facilities	<p>facilities at each individual institution and access clearly stated in the Inter-Institutional agreement</p>	<p>common infrastructure for training and management, also including a common web platform for a worldwide access to information and distant learning</p>
recruitment	<p>de-centralised at each home institution</p>	<p>centralised at network level based on online application process of internationally recruited applicants</p>
admission	<p>de-centralised</p>	<p>centralised at network level</p>
enrolment	<p>de-centralised</p>	<p>centralised at network level</p>
fee policy and grants	<p>de-centralised</p>	<p>centralised at network level</p>
degree	<p>degree awarded by home institution plus Additional Certificate to the Diploma (awarded only by the home institution or jointly awarded by two or more Institutions depending on the nature of their Agreements)</p>	<p>jointly awarded and recognised at network level (critics of double degree)</p>



The "musts" for establishing

TRAINING

Collaborative Internationalized Doctorate

Joint European/International Doctorate



research environment	collaboration between existing doctoral programs in different institutions	research training integrated structured programme built-up on internationally recognised research institutional networks: access to complementary expertise and collaborative trans-national research teams
joint supervision	main tutor at home institution and co-tutor/s at host institution/s, clearly designated and indicated in the individual training agreement for each research trainee	multiple supervision: at least 1 main tutor and 2 co-tutors belonging to partner institutions in 3 different countries, clearly indicated in the individual training
international mobility (both physical and virtual)	compulsory as strategic tool for the joint research training and not a sufficient requirement to obtain the Additional Certificate to the Diploma	compulsory as strategic tool for the joint research training and not a sufficient requirement to obtain the Joint Degree
International Summer Schools Lab Meetings, Joint Labs	not compulsory: courses and didactic activities at home and at host institutions (during the mobility period)	compulsory, due to the integrated and structured nature of the program
language for courses	as available at home and host institutions or as agreed on the basis of shared criteria	jointly established criteria to be clearly indicated in the Inter-Institutional Agreement
language policy for thesis	shared criteria to be clearly indicated in the Inter-Institutional Agreement	jointly established criteria to be clearly indicated in the Inter-Institutional Agreement
format for dissertation	shared criteria to be clearly indicated in the Inter-Institutional Agreement	jointly established criteria to be clearly indicated in the Inter-Institutional Agreement
credits (if any: controversial issue)	not compulsory, however if implemented: E.C.T.S. as system for transfer of learning outcomes	not compulsory, however if implemented: E.C.S. (without T) specifically designed and jointly adopted as system for accumulation rather than for transfer

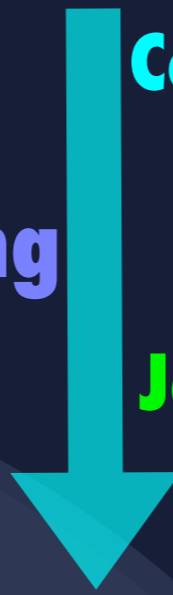


Collaborative Internationalized Doctorate

Joint European/International Doctorate

The "musts" for establishing

QUALITY CONTROL and Evaluation System



obligations and rights for both research trainees and tutors	consistent with the Regulations at home and host institutions and shared dispositions clearly indicated in the Inter-Institutional Agreement	consistent with the Regulations jointly established at network level (including entrepreneurial partners, if any) and clearly indicated in the multilateral Inter-Institutional Agreement
individual training agreement	to be signed by the research trainee, the programme coordinator and the tutors at home and host institutions, including entrepreneurial partners (if any)	to be signed by the research trainee, the network programme coordinator and the tutors at home and host institutions, including entrepreneurial partners (if any)
monitoring process, timeline and evaluation tools	to be established in accordance with the dispositions at the awarding institution and with the individual training agreement for joint supervision	on-going face-to-face and online evaluation of the trainee's progress to be jointly established and implemented at network level, including: timeline, online evaluation tools to be filled by the three tutor to provide feedback on progress reports at least on yearly basis on the personalised web space for each research trainee
Intellectual Property Right	to be detailed in the individual training agreement	to be detailed in the individual training agreement
evaluation of PhD dissertation International Final Jury	the International Final Jury in accordance with the regulations of the awarding institution, also including at least 1 member of the scientific board of the collaborative doctorates and 1 external internationally recognised expert	Multi-step evaluation process: a) authorisation by the three tutors to defend the thesis in front of the International Final Jury; b) in accordance with the regulations of the joint doctorate, including at least 3 members belonging to the network scientific board and 2 internationally recognised experts from outside the network, designated by the participating universities. The thesis supervisors shall participate in the discussion, but not in the final evaluation.
career development plan	to be encouraged as good practice adopted at each collaborative doctorate	career development plan for career prospect in and outside academia at network level for each individual research trainee, which continues to be monitored after his/her degree via Alumni Organisation.
Quality Evaluation Board	at each collaborative doctorate according to own institution's rules	multilevel evaluation process by: <ul style="list-style-type: none"> • Network Quality Board • Coordinating Institution Doctoral Committee • Independent Evaluation Committee



If you wish to know more

Background Papers

Higher Education in Europe, Vol. 33, No. 1, April 2008

 **Routledge**
Taylor & Francis Group

New Forms of International Cooperation in Doctoral Training: Internationalisation and the International Doctorate – One Goal, Two Distinct Models¹

ANNAMARIA SILVANA DE ROSA



If you wish to know more....



Background Papers

INTERNATIONALIZATION OF
COLLABORATIVE DOCTORATES AND JOINT
EUROPEAN/INTERNATIONAL DOCTORATES:
REQUIREMENTS AND GUIDELINES FOR EACH
DISTINCT MODEL

ANNA-MARIA SAVANA DE BOSA

IHEPI
6-8 September
2010

FROM HIGHER
EDUCATION
TO INNOVATION

EDITORS:
Agnieszka Klucznik-Törő
Krisztina Bódis
István Kiss Pál

www.IHEPI.net





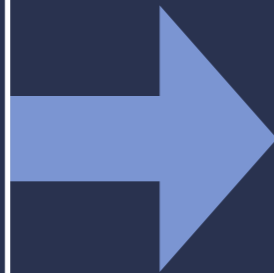
The second question by the session moderator Paul HARRIS:

“Do you think the collaboration will last after the end of the project (structural effect)?”

The history of progressive development of our program in 20 years is a **proven structural effect** of the EC approved project beyond the life cycle of each funded specific project.

Long term sustainability among other challenges: Institutions should survive to people and specific scientific circles and the multi-generational enterprise of our program is a proof of the vitality of our international joint doctorate. The role of the overcommitted founder/s (the so called “champion”) in creating, developing and looking for the program’s sustainability should be accompanied by a long term vision of the institutional program life cycle, not restricting shared responsibilities to the scientific collaborative aspects but also for fund raising commitment.

a reply to
the 2nd
Question



**An Institution born from a visioning idea:
1993-2015 a long institutional journey
bringing the bottom-up approach to the top**

**Mission build-up
of the program:**

**combining a network based on a
multi-generational community
of leading scientists (including the
founder of the Social Representation
theory Serge Moscovici)**



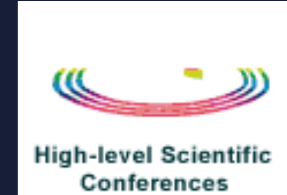
**with top institutional
recognition,
making the award of the joint
degree and a commitment
for long-term sustainability**



Institutional History of the and Recognition by

SoRCom JOINT IDP PEOPLE-ITN (2013-2017)

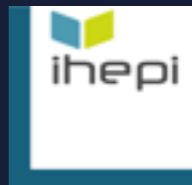
just the last step of our Institutional History and Recognition



Marie Curie Actions

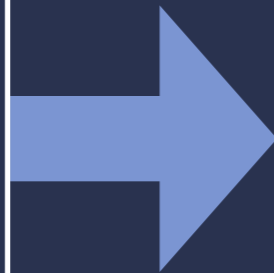


Fulbright Schuman Award





a reply to
the 3rd
Question



The progressive expansion of our networked joint doctoral program from the European dimension to the International global scenario in 3 continents (Europe, North and Latino-America and Asia) and to the intersectoral collaboration (**briefly illustrated in the next slides and documented in the program website**) may be an answer to the **third question by the session moderator Paul HARRIS:**

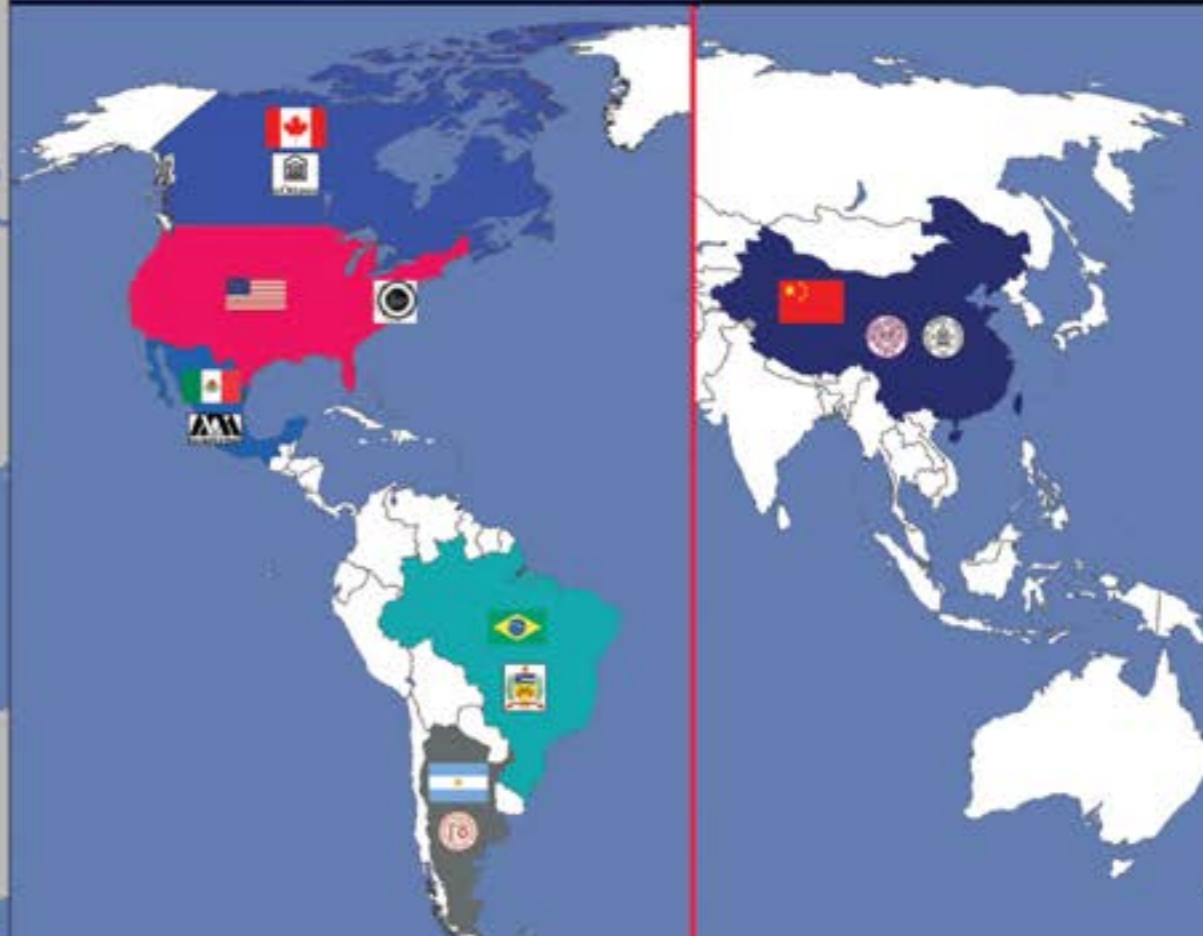
“Does the closer cooperation fostered by the EJD project open new possibilities for you (e.g. new partnerships?)”

The European/International Joint PhD in Social Representations and Communication in 2015:

25 academic and 4 non-academic partners in 12 EU and 6 extra-European Countries

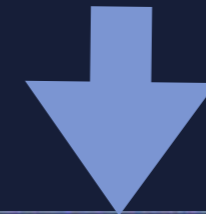


- 25 universities
- 1 National Research Centre
- 1 multinational company
- 2 SMEs

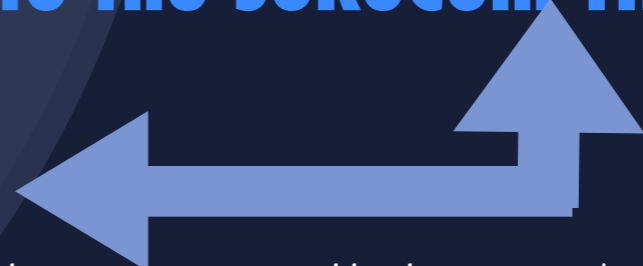


The European/International Joint PhD in Social Representations and Communication in 2015:

Partnerships with Multinational
Companies, SMEs, Research Centres



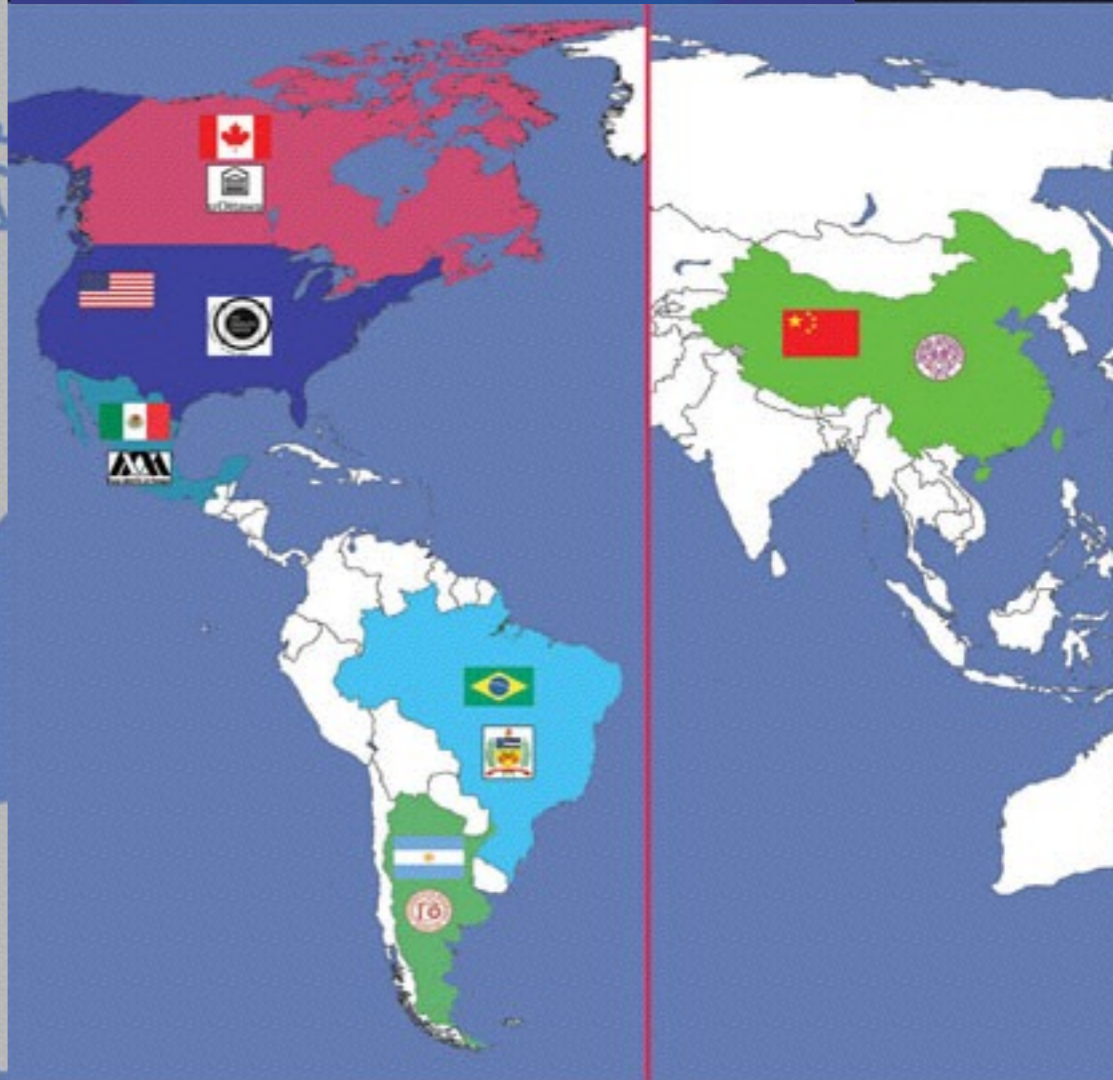
and Networks of Networks linked
to the SoReCom THEmatic NETwork



NETWORKS	
	The SoReCom THEmatic NETWORK of Excellence http://www.europhd.eu/SoReComTHEmaticNETWORK
	Network of Networks on Social Representations
	RIPRES http://www.cicts.uevora.pt/RIPRES
	International network of research on social representation of health
	Centro Internacional de Pesquisa em Representação e Psicologia Social "Serge Moscovici" http://www.centromoscovici.com.br/
	International Center for Research in Social Psychology and Social Representations
	CIERS-ed http://www.fcc.org.br/pesquisa/ciers.html
	Centro Internacional de Estudos em Representações Sociais e Subjetividade-Educação
	LACCOS http://www.laccos.org/
	Laboratório de Psicologia Social da Comunicação e Cognição
	GEIRSO http://www.unites.uqam.ca/geirso/
	Groupe d'étude sur l'interdisciplinarité et les représentations sociales
	LEPS http://www.leps.msh-paris.fr/index.htm
	Laboratoire européen de psychologie sociale
	Réseau Mondial Serge Moscovici http://remosco.hypotheses.org/
	Réseau Mondial Serge Moscovici
	Foundation of Center of Social Representations Studies http://www.sr-indonesia.org/en/
	Center for Social Representation Studies, Indonesia
	CeMeRS
	Centro Mediterraneo per lo Studio delle Rappresentazioni Sociali
	RENIRS-CEMERS http://renirs-cemers.blogspot.com/
	Red Nacional de Investigadores en Representaciones Sociales y del Centro Mexicano para el Estudio de las Representaciones Sociales
	EuroPACE Network of Universities and Enterprises http://www.europace.org
	EuroPACE Partner for Telematic Applications

RESEARCH FOUNDATIONS	
	F.M.S.H Paris http://www.msh-paris.fr
	Fondation Maison des Sciences de l'Homme Sponsor for Scientific Activities and Meetings
PUBLIC RESEARCH INSTITUTES	
	IFSTTAR http://www.ifsttar.fr
	French National Institute for Transport and Safety Research
ENTREPRENEURIAL PARTNERS	
	Elsevier B.V. http://www.elsevier.com/
	Strategic partner for publishing and dissemination strategies
	CONERI http://www.coneri.se
	Technological Partner for e-learning
	Contatto Lavoro s.r.l. http://www.contattolavoro.it/
	Professional Partner for Personal Career Prospects

The SoReCom Joint-IDP institutional network



PARTICIPANTS

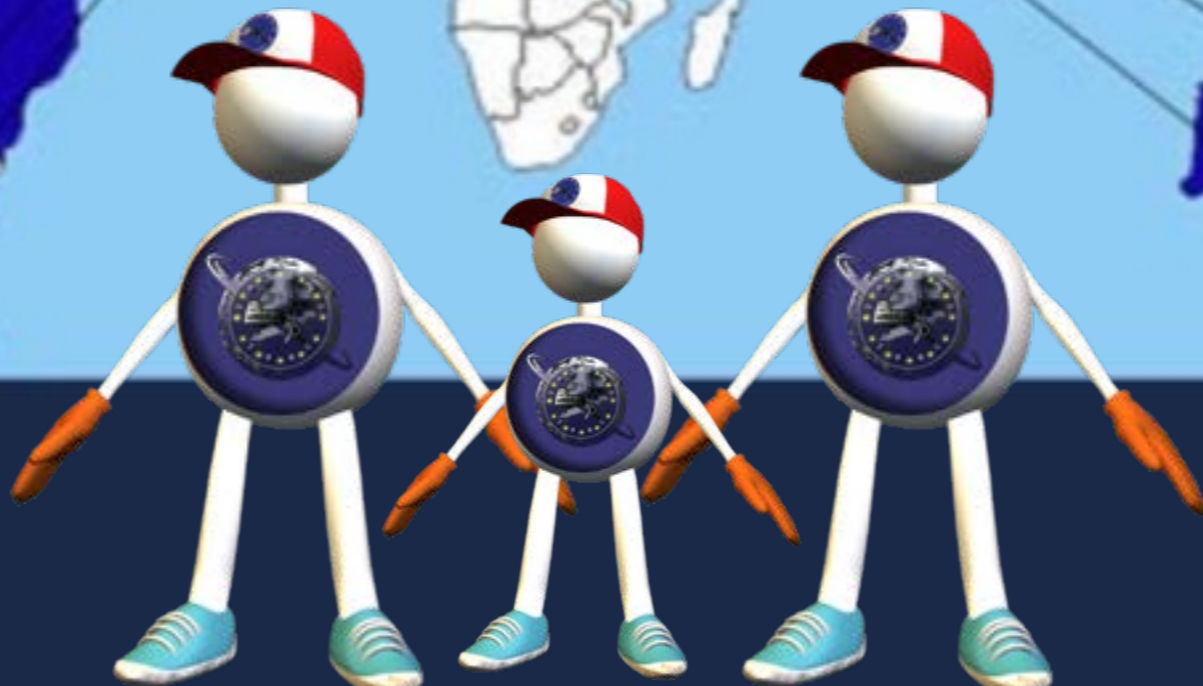
Albania	6
Argentina	22
Australia	5
Austria	18
Belarus	2
Belgium	4
Bosnia	1
Brazil	57
Bulgaria	11
Canada	10
Chile	7
China	25
Colombia	8
Croatia	2
Cyprus	3
Czech	25
Estonia	6
Finland	20
France	126
Germany	19
Greece	20
Guatemala	1
Hungary	26
India	4
Indonesia	36
Iran	1
Israel	4
Italy	384
Lebanon	5
Macedonia	2
Malta	2
Mexico	34
Moldavia	8
Montenegro	1
Nepal	2
Netherlands	2
New Zealand	2
Nigeria	5
Pakistan	2
Palestine	8
Poland	51
Portugal	54
Romania	168
Russia	11
Serbia	11
Slovakia	24
Slovenia	6
Spain	25
Sweden	10
Switzerland	7
Tunisia	13
Turkey	12
Turkmenistan	2
Ukraine	17
UK	18
USA	16
Venezuela	13
Totale	1384

1384 participants from 57 countries
331 guest speakers from 24 countries



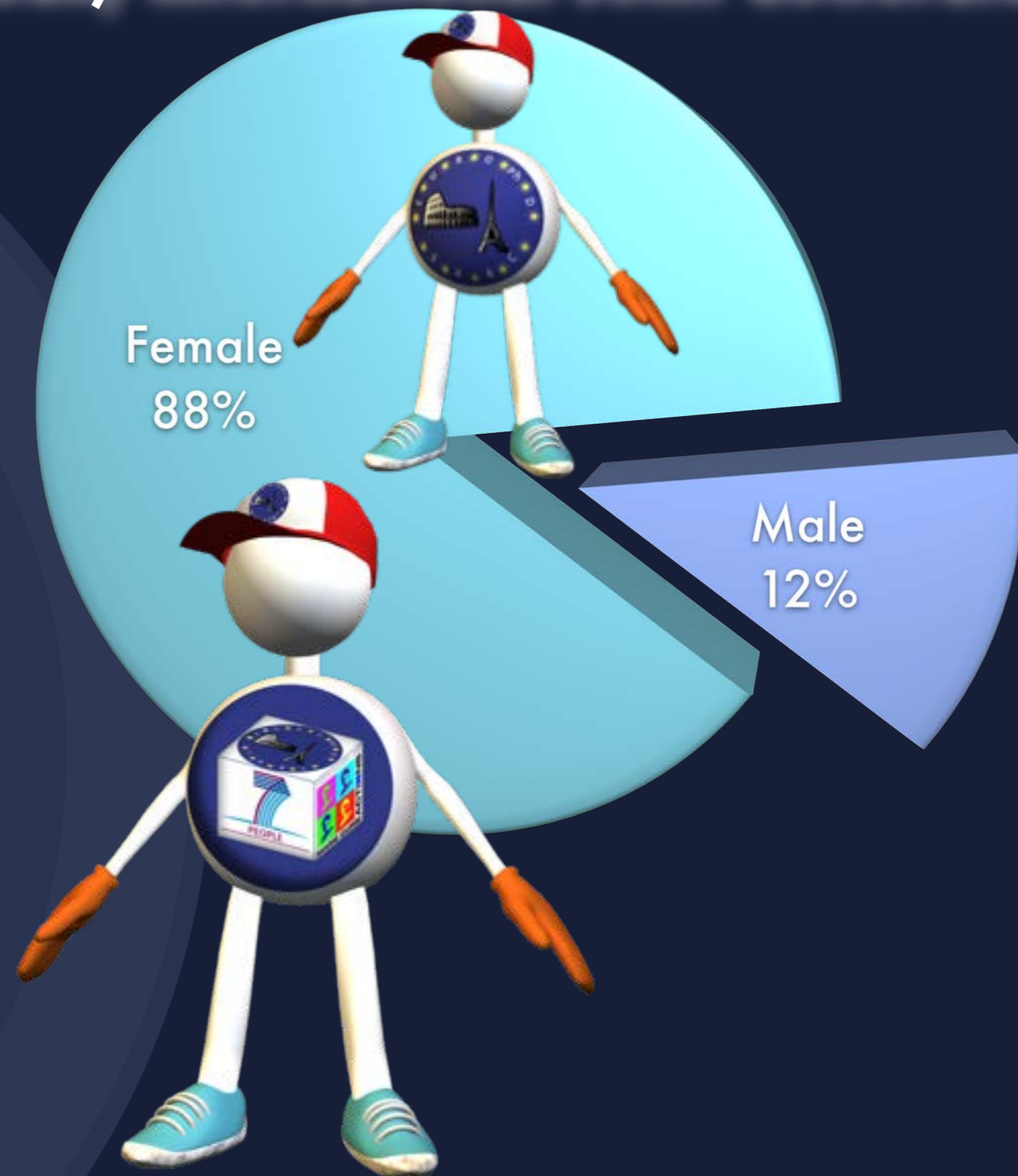
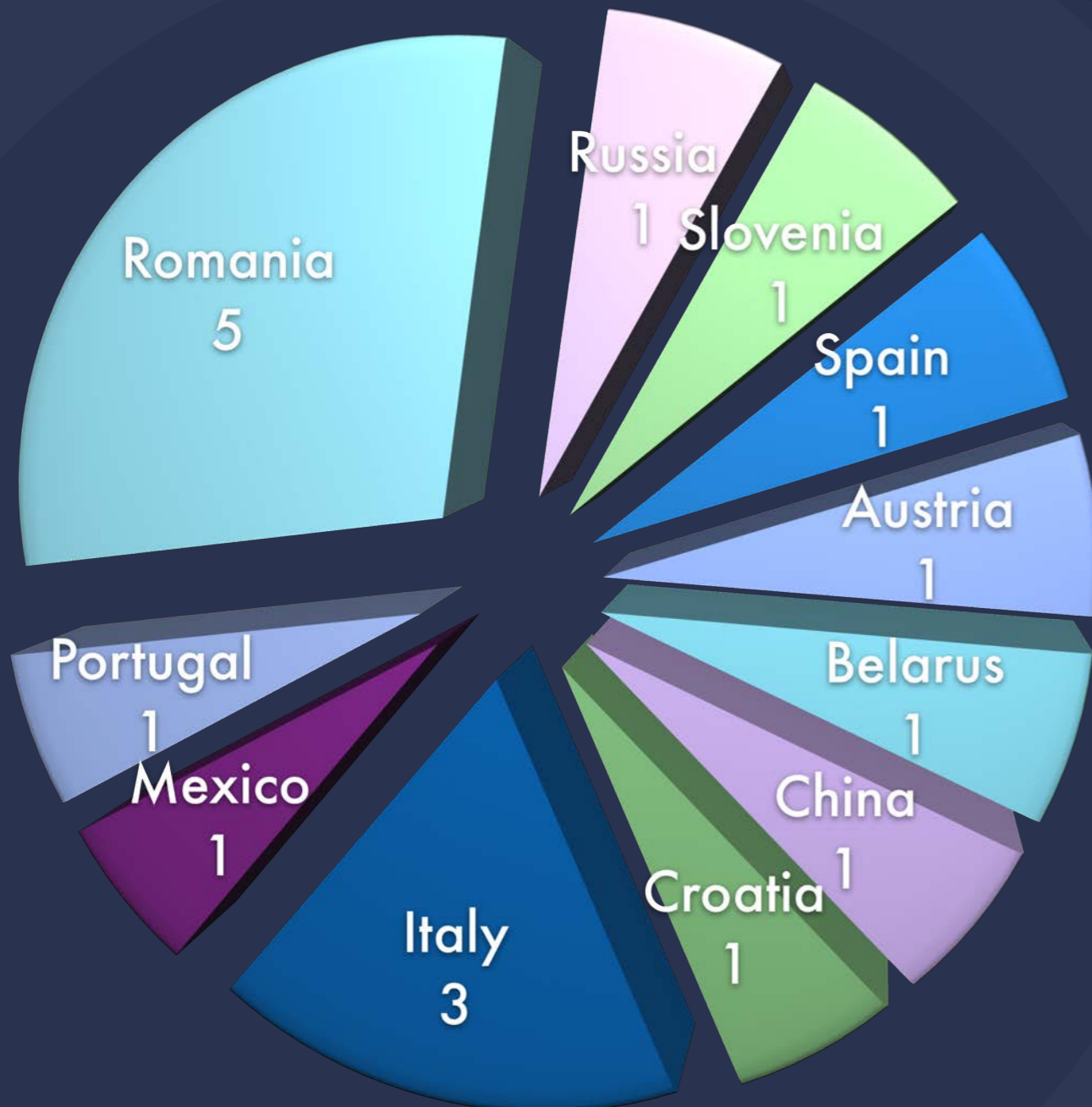
TEACHING STAFF

America	7
Austria	10
Belgium	2
Brazil	8
Canada	2
China	4
Czech	5
Estonia	1
Finland	12
France	65
Germany	3
Greece	2
Hungary	2
Israel	7
Italy	87
Latvia	1
Mexico	1
Poland	8
Portugal	21
Romania	7
Spain	24
Sweden	18
Switzerland	8
UK	26
Totale	331



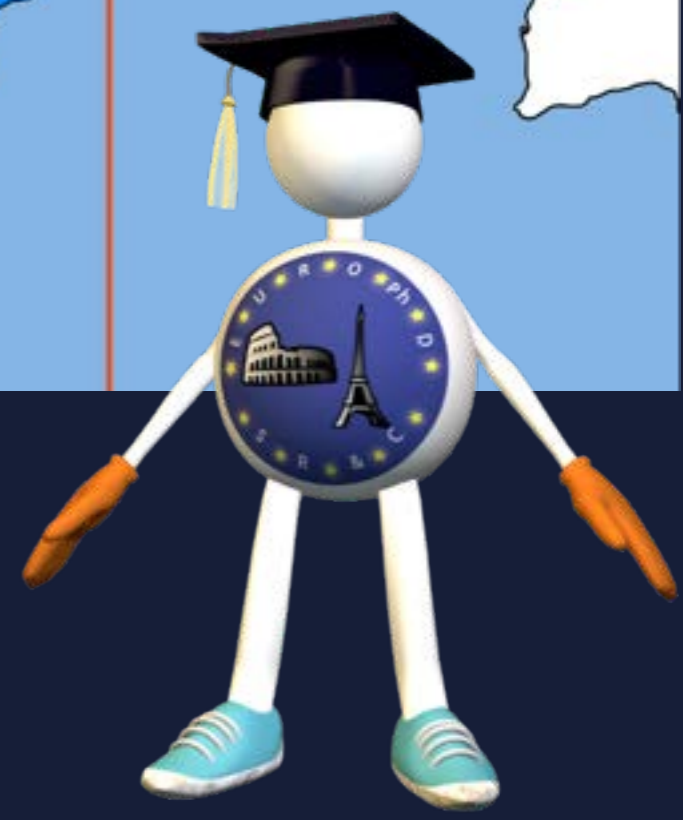
International Participants

18 research trainees from 12 countries in 3 continents currently enrolled in the European/International Joint doctorate for the a.y. 2014-15



European/International Joint PhD in Social Representations and Communication

27 DEGREE HOLDERS by 12 NATIONALITIES





The second "i": the Intersectoral dimension



The So.Re.Com.THEmatic NETwork at a glance: the European countries of partner Institutions



●●● The So.Re.Com. THEmatic NETwork

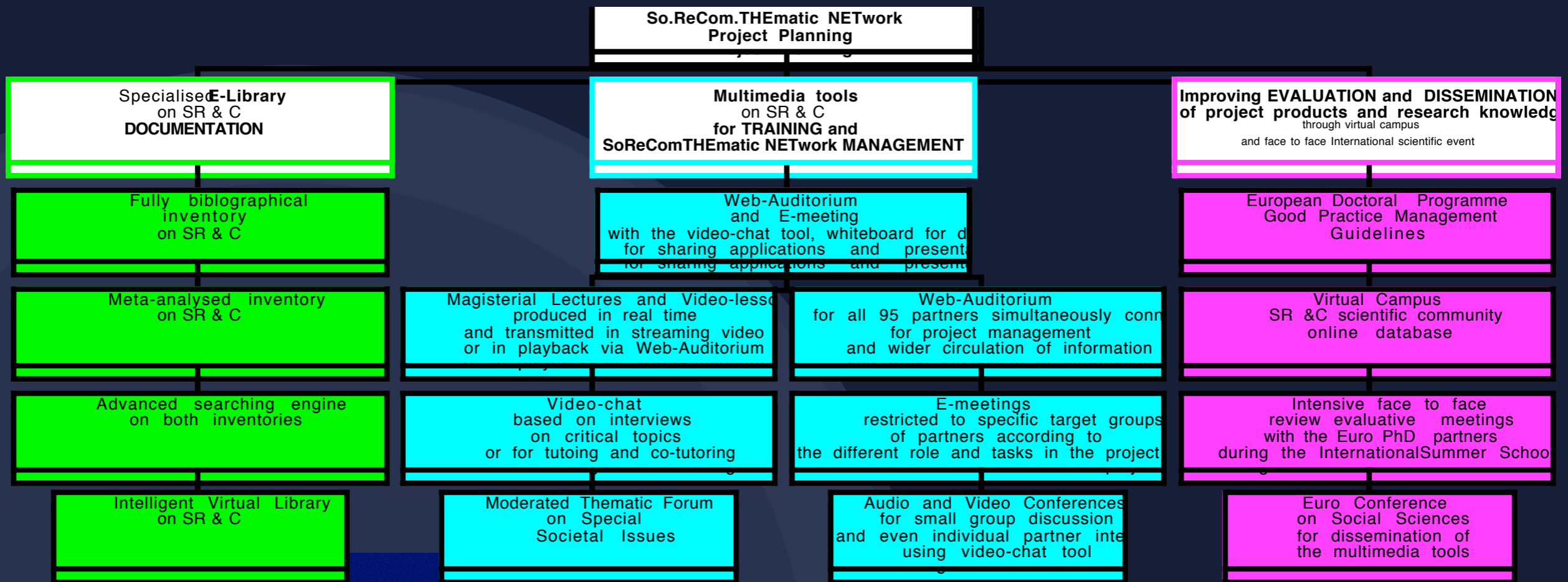


<http://www.europhd.eu/SoReComTHEmaticNETwork>

● The So.Re.Com.THEmatic NETwork ○ ● ● at a glance on global scenario



The So.Re.Com. Thematic Network of Excellence Outputs



Transferable skills provided by the non academic partners of the European/International Joint PhD



Elsevier

Knowledge of bibliometric tools, publishing strategies, editorial policy, etc.; cross-fertilising knowledge from Computer Sciences Engineering (Big Data, Bibliometrics,



IFSTTAR

Exposure to a variety of approaches thanks to the multidisciplinary research teams in fields such as: urban and environmental studies, transportation and telecommunication, epidemiology, ergonomics, psychology, sociology, statistics, artificial intelligence,



CONERI

Courses in communication and team processes related to online meetings. Research trainees actively participate in organizing e-meetings and virtual team building related to online meetings



Contatto Lavoro

Employer branding, qualitative and quantitative analysis, new media and training on WEB 2.0 corporate identity management, design and implementation of corporate blogs, forums and wiki websites. Small-company entrepreneurship skills,



The third "i": the Interdisciplinary dimension





a reply to
the 4th
Question

Q.4. = Do you think this kind of cooperation is more suitable for some particular research fields?

R. = The outcomes of the MSCA- People 2013 call – with a clear majority of submitted project selected in the field of physics, neuroscience and medicine (with the unique exception of our SoReCom Joint IDP proposal in social sciences selected with the highest evaluation 98,80/100 in the 2013 People Call) – is an indirect confirmation that in natural and so called hard sciences scientific collaborations - usually also involving the doctoral trainees in transnational research teams - are more common than in the humanities (where the PhD is still anchored into a tradition based on an apprentice model and an individually oriented study) with the “social sciences” in between the two models .

However the great change (defined “a silent revolution”) stimulated in the last decade in the doctoral education since the definition of the Salzburg Principles and the policies promoted by the various calls Erasmus Mundus (EMJD) and People-MSCA by the European Commission have promoted the internationalization of the doctoral education as more diffused practice also for doctoral programs in disciplines traditionally less ready to conduct research based on lab collaboration at transnational and intersectoral level.

We are proud to have been a pioneering case study in Europe (and not only: see the Fulbright-Schuman award in 2011-12 and outcomes) with a contagious disseminating effect for other networked doctoral program in all the disciplines. At my own University the Academic Senate has also approved in 2009 – under my initiative - the creation of Sapienza Coordination program for International Joint Doctorate, including international doctorates born in the last two decades after our doctorate (born in 1993 and formally implemented in 1996), including one in Socio-Economic and Statistical studies (born in 2001), an Erasmus Mundus doctorate in Astrophysics (born in 2003), one in Cognitive Neuro-Plasticity and Rehabilitation (born in 2005)

(<http://www.uniroma1.it/didattica/offerta-formativa/dottorati/sapienza-coordination-program-joint-european/international>)



Interdisciplinary research field characterized by

“Uniqueness” also in its denomination, that overcomes the traditional disciplinary boundaries, inspired by a supra-disciplinary field

multi-paradigmatic and multi-methodological approaches

and a variety of thematic areas dealing with relevant societal issues



The main research teams are:
(for more details click on the research team of your interest)



European Credit Transfer System (ECTS) adopted by the Euro PhD on Social Representations and Communication

Due to the integrated and joint nature of the programme, the adoption of **European Credit System** has been specifically designed as a system for credit accumulation, rather than a comparison of distributed teaching offers and transfer of learning outcomes. By conceptualizing the academic year not exclusively in terms of time, but in terms of earned credits, the system allows for flexibly meeting the needs of full-time and part-time research trainees.

In line with the policy recommended by EU DG-Education and Culture, the European Ph.D. adopted the European Credit Transfer System (ECTS) as an instrument for creating transparency and confidence in academic performance.

Research trainees are awarded up to 60 credits per year (20 for courses and didactic activities and 40 for research quality and related bibliographic knowledge).

The didactic structure within this overall strategy is highly innovative. As the system of **open distance learning** makes clear, European Ph.D. research trainees are involved in an interlocking system of **virtual and physical mobility** which allows for considerable **flexibility** in catering to research trainees' needs while at the same time guaranteeing individual **tutoring and interactive learning**:

E.C.T.S. system of credit FOR THE EURO PHD ON S.R. & C.

20 for courses and didactic activities	10 credits per year		international summer schools
	5 credits per year		seminars and courses
	5 credits per year		multi-media and distance interactive learning
40 for research each year =	30 credits per year		advanced research training
	10 credits per year		bibliographic knowledge

60 total credits in a year x 3 years = 180 total credits for complete curriculum



Quality Control and On-Line Monitoring System

Research trainee's Workplan chart and TIMELINE



Social Representations and Communication THEMATIC NETWORK
www.socrepcom.net
 SORE.COM-THETNET

European PhD on Social Representations and Communication Research Trainees WORKPLAN CHART and TIMELINE

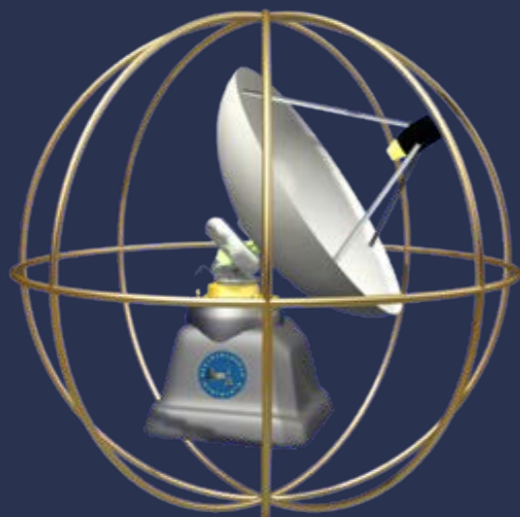
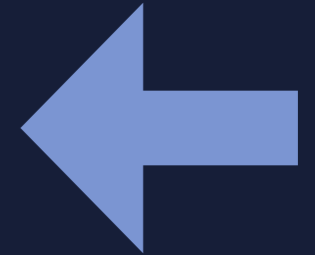
	YEAR 1 (Months)												YEAR 2 (Months)												YEAR 3 (Months)												
	N.	D.	J.	F.	M.	A.	M.	J.	J.	A.	S.	O.	N.	D.	J.	F.	M.	A.	M.	J.	J.	A.	S.	O.	N.	D.	J.	F.	M.	A.	M.	J.	J.	A.	S.	O.	
BIBLIOGRAPHIC KNOWLEDGE																																					
a) Theoretical preparation (basic literature reading) starting from the date of application to the PhD (in May)																																					
b) Submission of the list of selected articles and chapters to be meta-analysed																																					
c) Winter session: training on meta-theoretical analysis and presentations (P) by the research trainees enrolled in the previous years																																					
d) Submission and validation of at least 30 meta-analysed articles and chapters																																					
ADVANCED RESEARCH TRAINING																																					
Intensive tutoring and co-tutoring																																					
1.a) Theoretical modeling																																					
1.b) Research planning and methodological design:																																					
- Research tools definition																																					
- Sample identification																																					
- Data collection																																					
1.c) Initial report progress (R) to be presented during the International Summer School																																					
2.a) Data analysis																																					
2.b) Discussion of the results																																					
2.c) International mobility and networking activities: at least 6 months in 2 Institutions																																					
2.d) Intermediate report progress (R)																																					
3.a) Writing of the full Final Report Thesis (T) - deadline to submit it to the tutors																																					
3.b) Discussion of the full Final Report Thesis with the main tutor and co-tutors, revision and submission (T) for its multi-step evaluation																																					
3.c) Writing, discussion, revision and submission of the short article in English (A) for its multi-step evaluation																																					
3.d) Multi-Step Evaluation of the Thesis and short article by the members of the Final Jury																																					
3.e) Thesis Defence in front of the International Final Jury during the European PhD Summer School																																					
INTERNATIONAL SUMMER SCHOOLS																																					
MULTIMEDIA AND DISTANCE INTERACTIVE LEARNING																																					
SEMINARS at home and host Institutions																																					
CAREER PLANS and ALUMNI activities																																					
Submission of Final year Report x ECTS check																																					



Integrated PHYSICAL and VIRTUAL MOBILITY

NETWORK-TRAINING EVENTS

INTERNATIONAL SUMMER SCHOOLS



International Lab Meetings via Euro PhD web auditorium



Offline - Marratech

6.EuroPhdWeb-auditoriumco...

100%

16

Each session of the European Ph.D. International Lab Meetings includes two pilot tests before the events start aimed at verifying and assessing in advance the technical abilities of each participant. It provides two full days of basic and advanced training on the use of Marratech's programs. This includes an interactive test of the skills acquired by participants. Experience shows that after these sessions, participants, including senior professors unfamiliar with new technologies, are quickly able to actively participate in the event. Their presence visually, in text chat, their voices and videos and their interactive use of the *white-board* is warmly welcomed by all participants.

Indeed, the *white-board* allows interactive use not only among participants from in and outside the lab, but is highly functional for sharing applications and software. For example, this allows us for to hold advanced training sessions and collaborative learning on statistical packages by using data files provided by each participant. It is also interesting to use the *white-board's* share screen both for the participants' presentations (they start by locating themselves on the globe with an arrow and fill in whatever they believe best represents their identities) and for the collective evaluation of the event, by writing comments and suggestions on the shared screen.



European PhD on S. R. & C. WebAuditorium

Logged in as: europhtlabmeeting
Logout

Administration
Connection Check

Private rooms

- A. LabMeeting (low) info invite
- B. LabMeeting (low) info invite
- C. LabMeeting (low) info invite
- D. LabMeeting (Medium) info invite
- E. LabMeeting (Medium) info invite
- EuroPhD International LabMeeting (low) info invite
- E. LabMeeting (Medium) info invite

1 room in use
10 of 50 seats occupied

Marratech Manager 2.3
europhtlabmeeting of webauditorium.europhd.eu/0/

Using this service means you agree with the Marratech End User License Agreement. See also our online privacy information.

<http://webauditorium.europhd.eu/launch.jsp?id=1>

zotero

[R] Bettina Pa... P	[R] Conny Eri... P	[R] hillevi P	[R] Adrian P
		Adrian Guzman P VCR play (Adr... P	
[R] Tani Pedr... P	[R] Europhdlab P		
[R] chiaracav... P	[R] Valentina ... P	[R] Maciek Se... P	[R] elena bocci P
[R] Janine P	[R] Marialibera P	[R] Dino Num... P	[R] Carine Pia... P
[R] Lilian Neg... P			

00:30:30

Volume control and microphone icon

20 International Summer Schools on Social Representations and Communication



- 1995** FINLAND (Lathi) 1st International Summer School: "Evereday thinking, Social Representations and Communication"
- 1996** FRANCE (Aix-en-Provence) 2nd International Summer School: "Multiple strategies in the investiagtion of Social Representations"
- 1997** PORTUGAL (Lisbon) 3rd International Summer School: "S.R. theory: historical roots, articulation and development"
- 1998** SPAIN (San Sebastian) 4th International Summer School: "The theory towards applications"
- 1999** ITALY (Rome) 5th International Summer School: "Developing European Doctoral Training"
- 2000** ITALY (Rome) 6th International Summer School: "Social Representations Theory Around the World"
- 2001** ITALY (Rome) 7th International Summer School: "Communication: Languages, Representations, Interaction"
- 2002** ITALY (Rome/Genazzano) 8th International Summer School: "Communication, Media, Social Interactions and Social Representations" - New Media: Nets and Internet
- 2003** ITALY (Rome/Genazzano) 9th International Summer School: "Communication, Media, Social Interactions and Social Representation" - A Theoretical and Methodological Dialogue through research
- 2004** ITALY (Rome/Genazzano) 10th International Summer School: "Communication, Media and Social Representations" - Social influence and Communication in the new scenario of the information society: is it possible to change risk behaviour?
- 2005** ITALY (Rome) 11th International Summer School: "Applying the Facet Theory and Statistical Analysis via HUDAP software to Research on Social Representations: Computer Mediated Training Sessions, both Theoretical and Methodological"
- 2006** ITALY (Rome) 12th International Summer School: "Applying Dialogical Approaches and Conversational Analysis via Focus Groups to Research on Social Representations "
- 2007** ITALY (Rome) 13th International Summer School: "Structural Approach to Social Representations"
- 2008** ITALY (Rome) 14th International Summer School: "Social Representations, Collective Memory and Socially Shared Emotions: narrative and experimental approaches"
- 2009** ITALY (Rome) 15th International Summer School: "Cultural and cross-cultural approaches to Social Representations: the implications of the globalized/localized cultural scenarios"
- 2010** ITALY (Rome) 16th International Summer School: "Social Representations and Science"
- 2011** ITALY (Rome) 17th International Summer School: "Social Representations of Urban Places and Environment: Images, Memory and Identity"
- 2012** ITALY (Rome) 18th International Summer School: "Social Representations of Economics and Finance"
- 2013** ITALY (Rome) 19th International Summer School: "Intensive Training Sessions - Oktoberfest and People-IDP kick-off meeting and inaugural party "
- 2014** ITALY (Rome) 20th International Summer School: Genesis, development and actuality of the Social Representation theory in more than fifty years (1961-2011 and beyond): the main paradigms and the "modelling approach"



The European Ph.D. on Social Representations and Communication

26 International Lab Meetings So.Re.CoMEDIA & SOCIETY



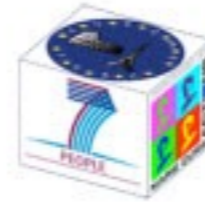
at the European PhD on Social Representations & Communication Multimedia LAB & Research Center, Rome-Italy
in combination with Worldwide on-line connection points

Winter 2005
Spring 2005
Summer 2005
Winter 2006
Spring 2006
Summer 2006
Winter 2007
Spring 2007
Summer 2007
Winter 2008
Spring 2008
Summer 2008
Winter 2009
Summer 2009
Winter 2010
Summer 2010
Winter 2011
Summer 2011
Winter 2012
Summer 2012
Winter 2013
Summer 2013
Winter 2014
Spring 2014
Summer 2014
Winter 2015
Spring 2015

- 1st International Lab Meeting: "Virtual Group Training and Individual Supervision Relating to the Distant Cooperative Research Program aimed at the Meta-
- 2nd International Lab Meeting: "Image-Based Research Methods for Analyzing Social Representations in action in different cultural contexts"
- 3rd International Lab Meeting: "Applying the Facet Theory and Statistical Analysis via HUDAP software to Research on Social Representations: Theoretical and
- 4th International Lab Meeting: "Training and Individual Supervision Relating to the Distant Cooperative Research Program aimed at the Meta-Theoretical
- 5th International Lab Meeting: "Modeling and Positioning Approach in Research on Social Representations"
- 6th International Lab Meeting: "Applying Dialogical Approaches and Conversational Analysis via Focus Groups to Research on Social Representations"
- 7th International Lab Meeting: "Anthropological Approach to Social Representations and Qualitative Methods"
- 8th International Lab Meeting: "Experimental Design in Investigating Social Representations and Influence Processes"
- 9th International Lab Meeting: "Structural Approach to Social Representations & advanced courses on Analysis of Similarity and the Evoc statistical
- 10th International Lab Meeting: "Developing Meta-Theoretical Approach to Social Representations Literature: the contribution of Italian Scholars
- 11th International Lab Meeting: "Identity and Social Representations: Cultural and Mythical Dimensions"
- 12th International Lab Meeting: "Social Representations, Collective Memory and Socially Shared Emotions: narrative and experimental approaches"
- 13th International Lab Meeting: "Meta-theoretical Analysis of Social Representations Literature"
- 14th International Lab Meeting: "Cultural & cross-cultural approaches to Social Representations: the implications of globalized/localized cultural
- 15th International Lab Meeting: "Meta-theoretical Analysis of Social Representations Literature"
- 16th International Lab Meeting: "Social Representations and Science"
- 17th International Lab Meeting: "Meta-theoretical Analysis of Social Representations Literature"
- 18th International Lab Meeting: "Social Representations of Urban Places & Environment: Images, Memory and Identity"
- 19th International Lab Meeting: "Meta-theoretical Analysis of Social Representations Literature"
- 20th International Lab Meeting: "Social Representations, Economics and Finance"
- 21st International Lab Meeting: "Meta-theoretical Analysis of Social Representations Literature" and Bibliometric Tools
- 22nd International Lab Meeting: "Intensive Training Sessions - Oktoberfest and People-IDP kick-off meeting and inaugural party "
- 23rd International Lab Meeting: "Meta-theoretical Analysis of Social Representations Literature" and Bibliometric Tools
- 24th International Lab Meeting: "Environment facing societal challenges"
- 25th International Lab Meeting: "Genesis, development and actuality of the Social Representation theory in more than fifty years (1961-2011 and beyond): the main paradigms and the "modelling approach"
- 26 International Lab Meeting: "Advanced Training in Meta-theoretical Analysis of the specialized literature on Social Representations Literature"
- 27 International Lab Meeting: "The "Anthropological", "Narrative", "Dialogical" and "Subjective" approaches to Social Representations



SoReCom Joint-IDP Training Events



Funded by the European Union

So.Re.Com. Joint-IDP 10 scientific events foreseen by the contract from 2014 to 2017

EVENT	TITLE	DATE
2014 Int. summer School	Genesis, development and actuality of the Social Representation theory in more than fifty years (1961-2011 and beyond): the main paradigms and the <i>modelling approach</i>	13 th - 19 th July 2014
2015 Winter Lab Meeting	Training in the meta-theoretical analysis of the specialised literature on S.R. & Communication	25 th - 28 th January 2015
2015 Spring Lab Meeting	The "Anthropological", "Narrative", "Dialogical" and "Subjective" paradigmatic approaches to Social Representations	26 th - 29 th April 2015
2015 Int. summer School	Mapping the impact and dissemination of the social representation theory across different geo-cultural contexts around the world: from Europe towards other continents	18 th - 25 th July 2015
2016 Winter Lab Meeting	Training in the meta-theoretical analysis of the specialised literature on S.R. & Communication	24 th - 27 th January 2016
2016 Spring Lab Meeting	The "Structural" paradigmatic approach to Social Representations	17 th - 20 th April 2016
2016 Int. summer School	The "methodological polytheism in the Social Representations literature and its implication in the contemporary communication era: distinctiveness and dialogue between multiple research methods	17 th - 23 rd July 2016
2017 Winter Lab Meeting	Training in the meta-theoretical analysis of the specialised literature on S.R. & C.	29 th January - 1 st February 2017
2017 Spring Lab Meeting	The "Socio-Dynamic" paradigmatic approach to Social Representations	16 th - 19 th April 2017
2017 Int. summer School	Social Representations in the social arena faced with social demand: the impact of this supra-disciplinary research field on the wide range of societal issues investigated in the various thematic areas in multiple applied contexts	16 th - 22 nd July 2017

Grant Agreement PITN-GA-2013-607279 - So.Re.Com. Joint-IDP



Tuesday Lab Seminars

Food for mind and Methodological Training

&

Transferable skills workshops schedule




Web-interactive training session via Adobe Connect, led by Sonia Adele, HSTAR (Paris, France)

- Presentation of the software MDT: description and functionalities
- Presentation of the software WORDLE: description and functionalities

Tuesday Lab Seminars



Transferable skills workshops schedule

Food for mind and Methodological Training

How to Write a Great Research Paper, and Get it Accepted by a Good Journal



Elsevier Author Seminar



Quality Control and On-Line Monitoring System via personalised web site for each research trainee



home site map

EURO PH.D.
European Ph.D. on
Social Representations and Communication

Logged User: Annamaria de Rosa [Your Profile] [logout]

[redacted] - Research project - Final thesis evaluation

Main tutor or co-tutors selection: 1 Annamaria de Rosa 2 [redacted] 3 [redacted] 5 [redacted]

European Ph.D. Research Trainees list

- Personal Data
- Curriculum
- Research project:
 - Abstract
 - Initial report
 - Intermediate report
 - Final thesis
 - Final article
- Research report evaluation:
 - Initial report
 - Intermediate report
 - Final thesis
 - Final article
- ECTS - EuroPhD Training individual profile
- Publications

DOUBLE FORMAT for the THESIS: Book and Article



- **BOOK FORMAT:**
- **to write the full report of their dissertation in a national language of the country where the doctorate is being pursued (site of the national tutor acting as main supervisor) or in English. This is to be evaluated by the national tutor.**
- **ARTICLE FORMAT:**
- **To write a short version in English, which - upon agreement of the three tutors - should be evaluated by the International Evaluation Board (Final Jury) and**

European/International Joint PhD in Social Representations and Communication

27 DEGREE HOLDERS by 12 NATIONALITIES





The European/International Joint Ph.D. on Social Representations and Communication Research Centre and Multimedia Lab



If you wish to know more,
please consult our dedicated web-site platform:
<http://www.europhd.eu>



If you wish to know more...



Background Papers

Promoting Joint European/International Doctorates in a global scenario

Opening the European PhD on Social Representations and Communication to the world

Annamaria Silvana de Rosa

Internationalisation of European Higher Education

Content

Research on Internationalisation in Higher Education

Barbara M. Kehm, Ulrich Teichler

New challenges in the recognition of qualifications around the world

Carita Blomqvist

Language Policy and the Internationalisation of Higher Education Institutions in Finland

The case of the University of Helsinki

Ulla-Kristiina Tuomi

US Higher Education

Rolf Hoffmann

Promoting Joint European/International Doctorates in a global scenario

Opening the European PhD on Social Representations and Communication to the world

Annamaria Silvana de Rosa

RAABE
NACHSCHLAGEN – FINDEN

Background Papers



The So.Re.Com. EuroPhD World: Combining Partnerships with Innovation



If you wish to know more...



Background Papers

JOINT DEGREE PROGRAMS

The Joint European/International Doctorate: A Strategic Tool to Enhance Worldwide Institutional Collaboration

By Annamaria Silvana de Rosa

I I I ENETWORKER

A publication of the Institute of International Education www.iae.org

Fall 2010 \$7.00

International Education in Europe



Applying
European
Approaches
to U.S. Higher
Education

The First Decade
of the Bologna
Process

Trends in
English-Taught
Master's Programs
in Europe

Background Papers



THE EUROPEAN/INTERNATIONAL JOINT PHD IN SOCIAL REPRESENTATIONS AND COMMUNICATION: A PIONEER CASE OF TRIPLE "I" (INTERNATIONAL, INTERDISCIPLINARY, INTERSECTORAL) NETWORKED JOINT DOCTORATE

Annamaria Silvana de Rosa

European/International Joint PhD in Social Representations and Communication Research Centre and Multimedia Lab, Sapienza University of Rome (ITALY)

INTED 2015

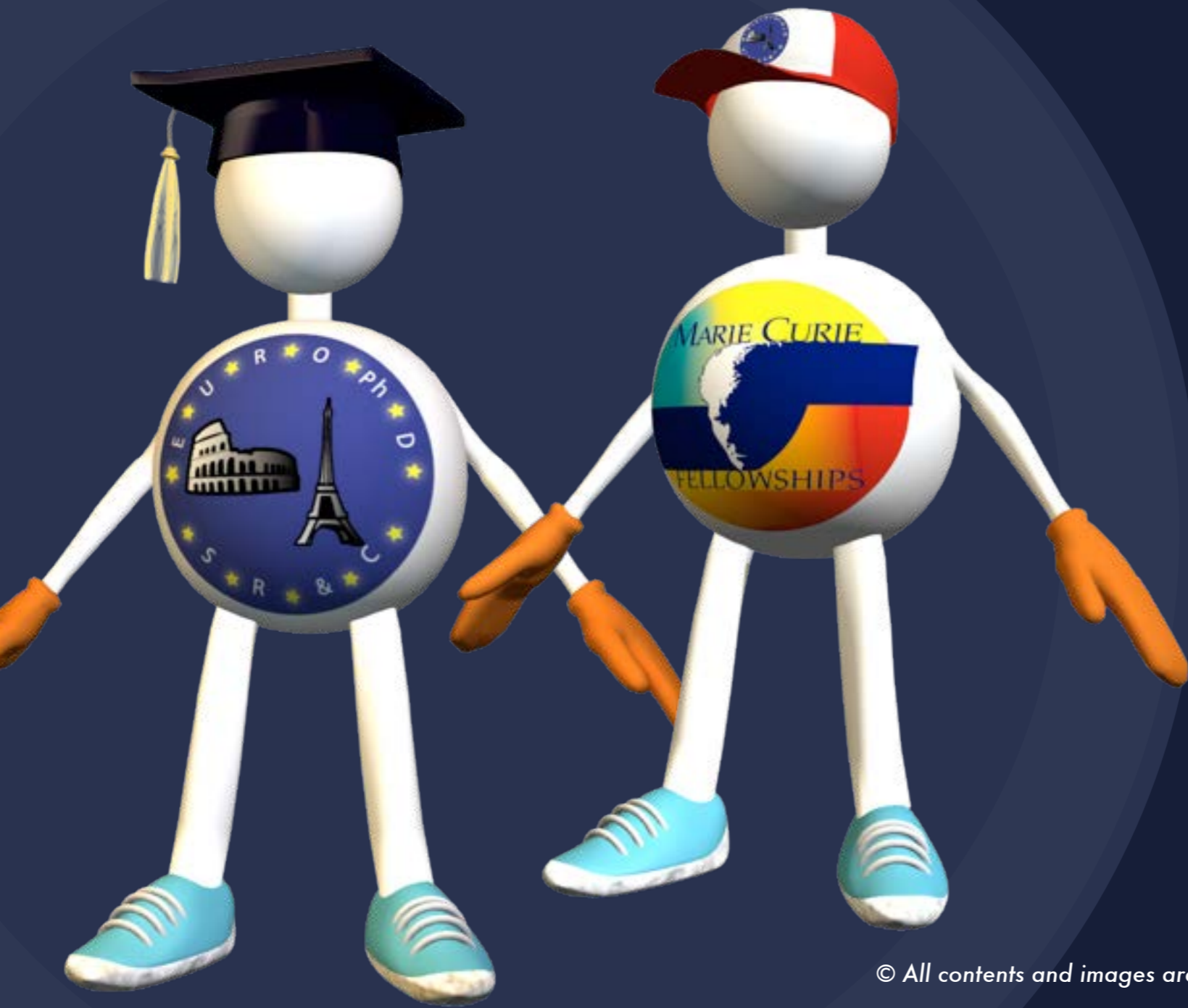
PROCEEDINGS CD

ISBN: 978-84-606-5763-7



Thank you for your attention

....not only “*his*” works,
but also “*their*” works will follow him....



annamaria.derosa@uniroma1.it

www.europhd.eu