



Funded by the European Union

El desarrollo y difusión de la Teoría de las Representaciones Sociales desde un Enfoque Paradigmático Antropológico

Annamaria Silvana de Rosa, Laura Arhiri , Laura Dryjanska

European/International Joint PhD in Social Representations and Communication

Research Centre and Multimedia Lab

Sapienza University of Rome (Italy)

<http://www.europhd.eu>

III COLOQUIO NACIONAL DE INVESTIGACION EN REPRESENTACIONES SOCIALES

Retos y desafíos para el México de hoy. Ciudadanía, conflicto y cambio social.

[Universidad Veracruzana, Xalapa, October 28-29, 2015]



SAPIENZA
UNIVERSITÀ DI ROMA

Research Project institutional background

SoReCom Joint IDP
built on the long term
experience started in 1996 of

**European/International Joint PhD
in Social Representations and
Communication**

Joint Degree awarded by 8
universities
in 5 countries
(IT, FR, RO, CZ, ES)

Collaboration with a wider
network of universities and
non-academic partners in EU
& extra-EU countries

**SoReCom THEmatic NETwork
of Excellence**

“network of networks” that promotes co-
operation between academic, professional
research and commercial institutions and
facilitates the dissemination of scientific results
throughout Europe and around the world



Funded by the European Union

Institutional History of the European/International Joint PhD in S.R. & C.



**The SoReCom Joint-IDP
(2013-2017)**

**just the last step of
more that 20 years of
Institutional History and Recognition
(1993-2015)**

The first “i” of the triple “i”: the International dimension



1993:

**13 Universities in 9 EU countries
founders of the
European/International Joint PhD in
Social Representations and
Communication**



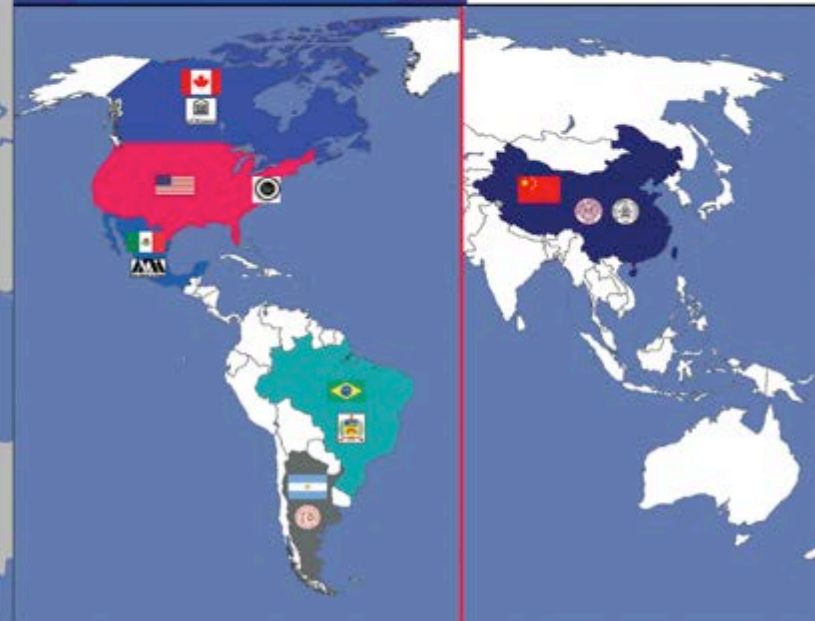
Funded by the European Union

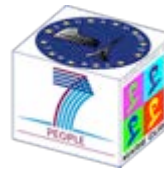
European/International Joint PhD in Social Representations and Communication in 2015

25 academic and 4 non-academic partners in 12 EU and 6 extra-European Countries



- 25 universities
- 1 National Research Centre
- 1 multinational company
- 2 SMEs





Funded by the European Union

The SoReCom Joint-IDP Network



SoReCom Joint-IDP Partnership

14 Universities and 3 non-academic partners in 8 EU and 6 extra-Eu Countries

Project Beneficiary and Coordinator	Università degli Studi Roma La Sapienza (Italy)
Academic Associate Partners	<ol style="list-style-type: none"> 1. Masarykova Univerzita (Czech Republic) 2. Universitatea Alexandru Ioan Cuza (Romania) 3. Universität Wien (Austria) 4. Universidad del Pais Vasco (Spain) 5. Universidad de Valencia (Spain) 6. Université de Genève (Switzerland) 7. Université de Lausanne (Switzerland) 8. University of Ottawa (Canada) 9. City University of New York (USA) 10. Universidad de Belgrano (Argentina) 11. Universidade Federal de Santa Catarina (Brazil) 12. Universidad Autonoma Metropolitana (Mexico) 13. Nankai University (China)
Non-Academic Associate Partners	<ol style="list-style-type: none"> 1. Institut Français des Sciences et Technologies des Transports, Aménagement et des Réseaux (France) 2. ContattoLavoro s.r.l. (Italy) 3. Conny Ericsson Försäljning AB (Sweden)



Three Forms of ITN

Multi-ITN: Multi-partner training network

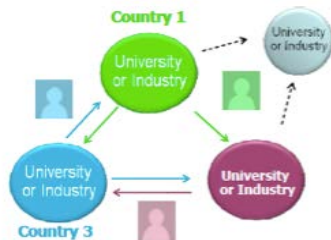
EID: European Industrial Doctorate

IDP (now EJD): Innovative Doctoral Programme – European “Joint” Doctorate



Three Forms of ITN

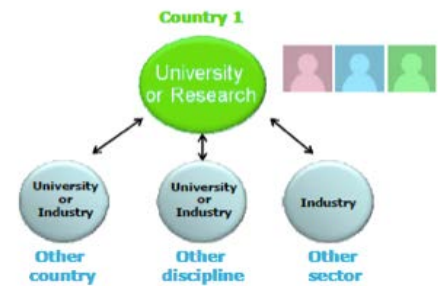
Multi-ITN

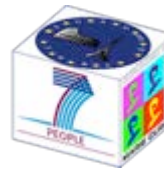


EID

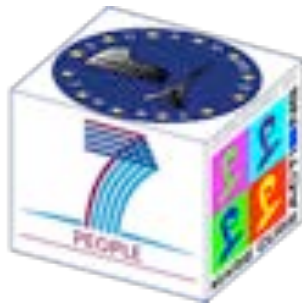


IDP

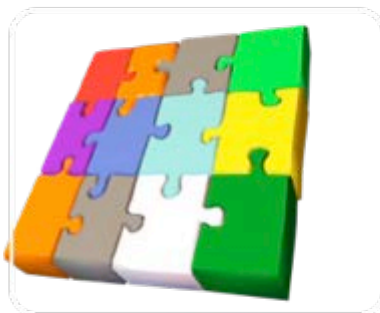




Funded by the European Union



"Joint" Diplomas:
the end starts from
the beginning



I. Scientific aspects

SoReCom Joint-IDP main objectives

- Attract the best early-stage researchers from abroad to **undertake their research training at the European/International Joint PhD in S.R. & C. Research Centre and Multimedia Lab in Rome (Italy)** , as mono-contractor Institution and project leader, and at the host Institutions in other 7 EU and 6 extra EU countries during their secondment
- **Involve** internationally recruited, trained, and monitored **early-stage researchers in a cooperative unified research program**
- **Provide doctoral training in the field of Social Representations** by structured training-through-research in an internationally recognised networked research environment
- **Offer** via one integrated contract **activities that until 2013 have been funded by several different contracts** : International Lab Meetings, International Summer Schools, Research Activities, development of the *SoReCom "A.S. de Rosa" @-library*, etc.
- **Promote European excellence beyond the boundaries of the European Union** in synergy with well-reputed scientists and research centres in some non-EU countries of great strategic value for the expansion of the scientific field led by European scientists
- Make **research careers** more attractive via **cooperation between academia, public research centres, and SMEs**

I. Scientific aspects

Unified research framework

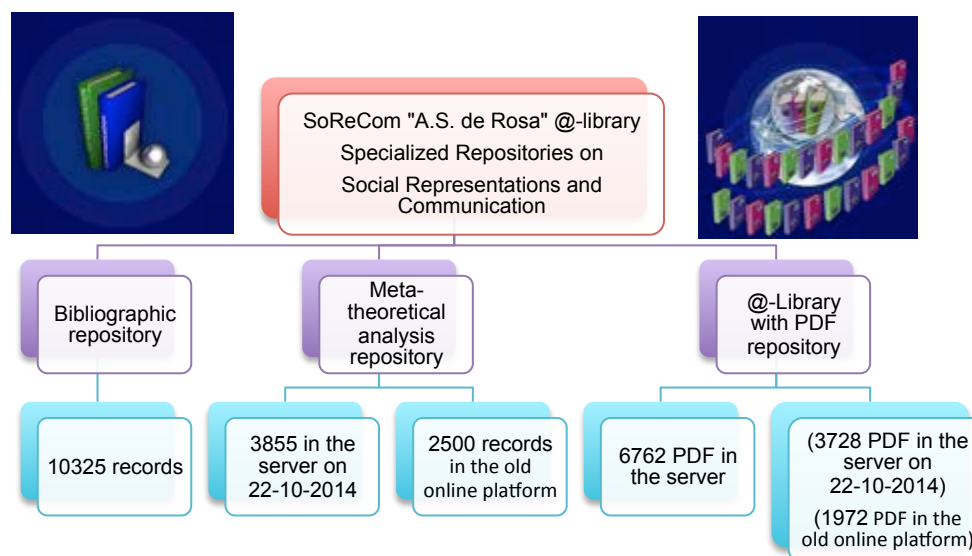
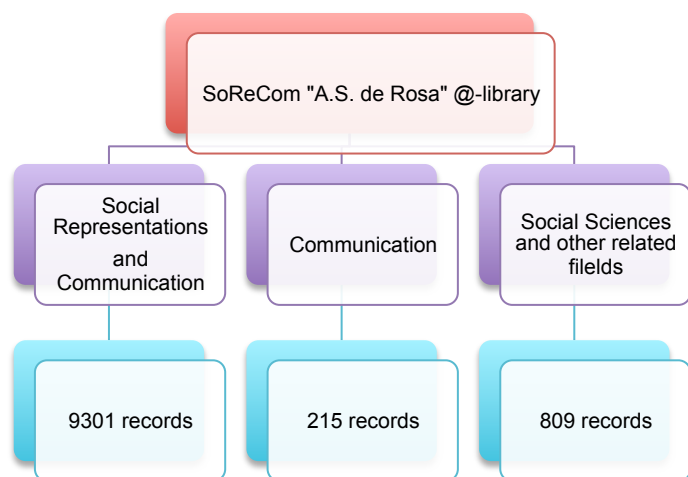
- Main characteristic of the **Social Representations supra-disciplinary field** is its great consistency in terms of epistemological and theoretical inspiration and its **rich diversity** from the **paradigmatic point of view**, in terms of **methodological approaches**, from the **thematic point of view** and with respect to the **applied contexts and domains of expert and lay knowledge production and transmission**.
- The objective of this **multi-year research program – launched in 1994** by the project leader - is to **evaluate the impact of the scientific production** driven by the **Social Representations theory in the social arena faced with social demand**. The aim is to **take stock of the scientific field developed in more than 50 years** by conducting an **empirical meta-theoretical analysis of the literature** on Social Representations, **mapping the development of different paradigms**, the related **research methods**, the **thematic areas** and their impact on the various applied fields within the multi-generational community of scientists and across different geo-cultural contexts.
- The **unified research project framework** have been **articulated into 13** precise objectives concerning the **specific research lines** to be developed by each recruited ESR



Funded by the European Union

Source of the big-data and meta-data

- As of July 2015 the total of 10,325 records
- Total of 9301 publications present in the **So.Re.Com "A.S. de Rosa" @-Library** that refer to social representations and communication
- Based on the selected information concerning the bibliographic item
- Destined to grow as a result of our collaborative team work in the future

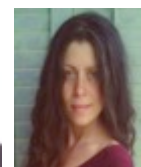
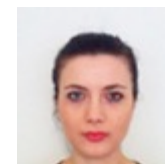


13 ESRs' Individual Research Focus



Funded by the European Union

Full Name	Nationality	Research Project
Guraliuc Ioana	Romania	Genesis and development of the "structural paradigmatic approach" in more than 50 years of social representation theory: mapping theory, methods, thematic areas and applications
Gjorgjioska Marija Adela	Macedonia	Genesis and development of the "socio-dynamic paradigmatic approach" in more than 50 years of social representation theory: mapping theory, methods, thematic areas and applications
Kukharava Maryia	Belorussia	Genesis and development of the "dialogical, conversational and narrative paradigmatic approaches" in more than 50 years of social representation theory: mapping theory, methods, thematic areas and applications
Arhiri Laura	Romania	Genesis and development of the "anthropological and ethnographic paradigmatic approach" in more than 50 years of social representation theory: mapping theory, methods, thematic areas and applications
Pastorino Agnese	Italy	Genesis and development of the "modelling paradigmatic approach" in more than 50 years of social representation theory: mapping theory, methods, thematic areas and applications
Tomicic Ana	Croatia	Mapping the impact and dissemination of the social representation theory across different geo-cultural contexts: "Europe", the theory's homeland
Gherman Mihaela Alexandra	Romania	Mapping the impact and dissemination of the social representation theory across different geo-cultural contexts: "North-America and other continents (Oceania, Asia, Africa)", the new emerging scenarios
Teresa Forte	Portugal	Mapping the impact and dissemination of the social representation theory across different geo-cultural contexts: "Latin America", the most fertilised scenario
Ramazanovna Aminat	Russia	Taking stock of the literature in the thematic field of "Science, Social Representations and Communication"
De Madaria Borja	Spain	Taking stock of the literature in the thematic field of "Social Representations and Environment"
Panzaru Gabriela	Romania	Taking stock of the literature in the thematic field of "Social Representations, Economy, Advertising, Marketing and Organizational Contexts"
Miguel Aguilar Carlos Filiberto	Mexico	Taking stock of the literature in the thematic field of "Social Representations, Community & Health"
Berardi Filomena	Italy	Taking stock of the literature in the thematic field of "Social Representations & Politics: Multidimensional identities, intergroup relations, social movements and active minorities"

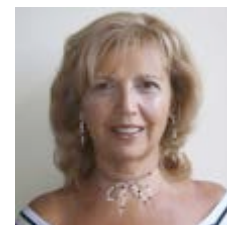


The SO.RE.COM. “A.S. de Rosa” @-LIBRARY



Funded by the European Union

- A multiform digital environment of integrated relational data-bases conceived in the logic of the **semantic web**, including a series of web interfaces, aimed to integrate:
- A) **documentation services** (bibliographic repository, meta-theoretical analysis repository, intelligent @-Library)
- B) **networking** (interactive web-videoconference, on-line So.Re.Com. virtual community)
- C) **research training** (European/International Joint PhD “Virtual Campus”: video-courses in streaming, distant tutoring and co-tutoring, on-line trainee evaluation, etc. <http://www.europhd.eu>);
- It includes over **10,000 references**, and a vast and growing collection of bibliographic entries and a series of specific web-tools designed by **Annamaria Silvana de Rosa**, who is also the creator and the program director of the European/International Joint PhD in Social Representations and Communication and of the So.Re.Com. THEmatic NETwork).



II. Methodology

- Specific web-tools have been designed by de Rosa for the meta-theoretical analysis and the related web-inventories) implemented in the institutional website (<http://www.europhd.eu>) currently in transition into a new digital platform of the **So.Re.Com. “A.S. de Rosa” @-library**



Funded by the European Union

Research tools

The **grid for meta-theoretical analysis of literature on Social Representations** is organized in **five main areas**:

- **Theoretical reference to Social Representations constructs** monitors whether a publication refers to Social Representations Theory in a very generic way or addresses specific paradigmatic elements of the theory (i.e. the genesis, processes, functions, structure, transmission, and transformation of Social Representations) or whether the contribution refers to the theory itself as an object of critical analysis (meta-theory);
- **Theoretical reference to other constructs and theories** identifies whether the publication refers to other constructs, concepts and theories related to Social Representation as well as the focus of the reference: integration, differentiation, comparison, replacement;
- **Thematic analysis** categorizes the contents of empirical contributions by identifying the general thematic areas (i.e. health, environment, etc.) and the specific object of each study (i.e. AIDS, pollution, etc.), as well the specific typology (closed, open, polemic) of the Social Representations;
- **Methodological profile of each study** (its research design, its location, its nature, instruments for data collection, channels used as source of information, techniques for data analysis) and characteristics of the selected population (size of sample, variables considered, unit of analysis);
- **Paradigmatic coherence** between the theoretical assumptions and the methodological research design.

III. Research goals

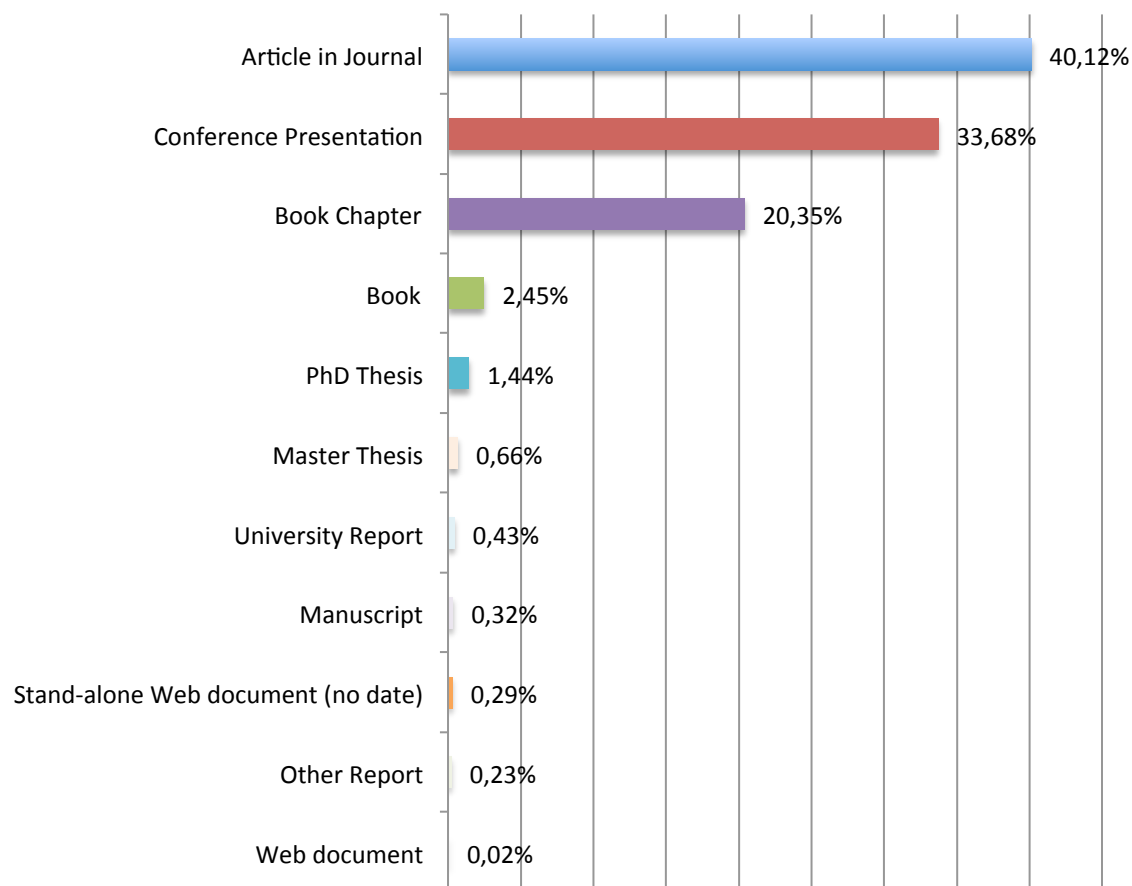
- Built on an on-going project led since 20 years by the director of the *European PhD on Social Representations and Communication Research Centre and Multimedia Lab* who has ***designed specific web-tools (including the on-line grid for the meta-theoretical analysis and the related web-inventories)*** for the purpose of conducting an empirical meta-theoretical analysis of the literature on Social Representations, ***the specific project aim is to take stock of the scientific field developed in more than 50 years by conducting an empirical meta-theoretical analysis of the literature on Social Representations, mapping its development, the related research methods, the thematic areas and their impact on the various applied fields within the multi-generational community of scientists and across different geo-cultural contexts.***



Funded by the European Union

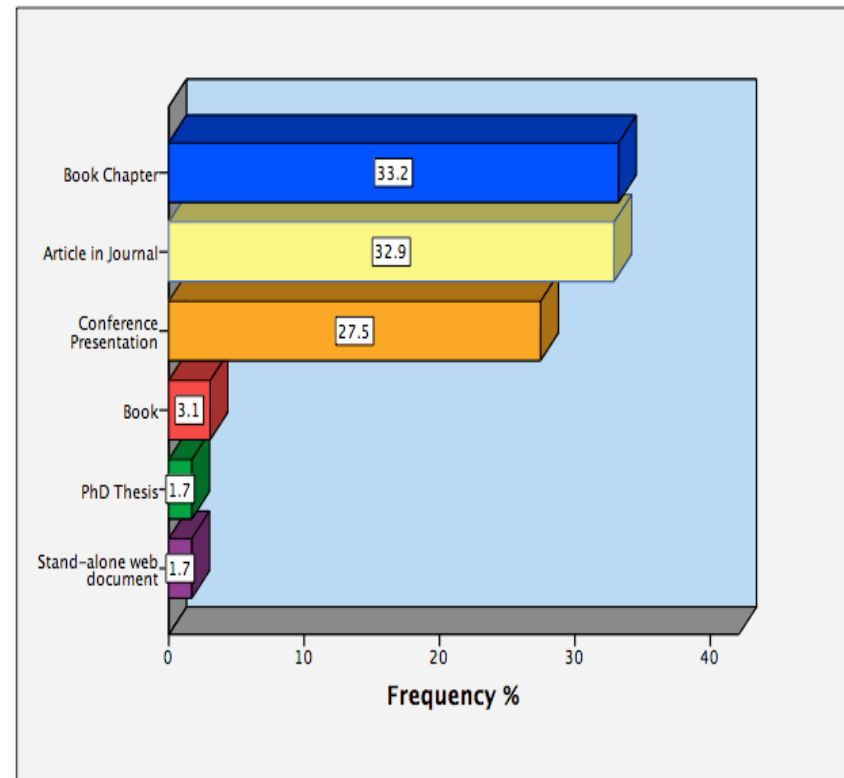
The frequencies distribution of 9301 items specifically related to **Social representations and Communication** filed in the repositories of the SoReCom “A.S. de Rosa” @-Library by the “**Resource Type**”

Resource Type	Absolute Frequency	Frequency %
Article in Journal	3732	40,12%
Conference Presentation	3133	33,68%
Book Chapter	1893	20,35%
Book	228	2,45%
PhD Thesis	134	1,44%
Master Thesis	61	0,66%
University Report	40	0,43%
Manuscript	30	0,32%
Stand-alone Web document (no date)	27	0,29%
Other Report	21	0,23%
Web document	2	0,02%
Total	9301	100,0%



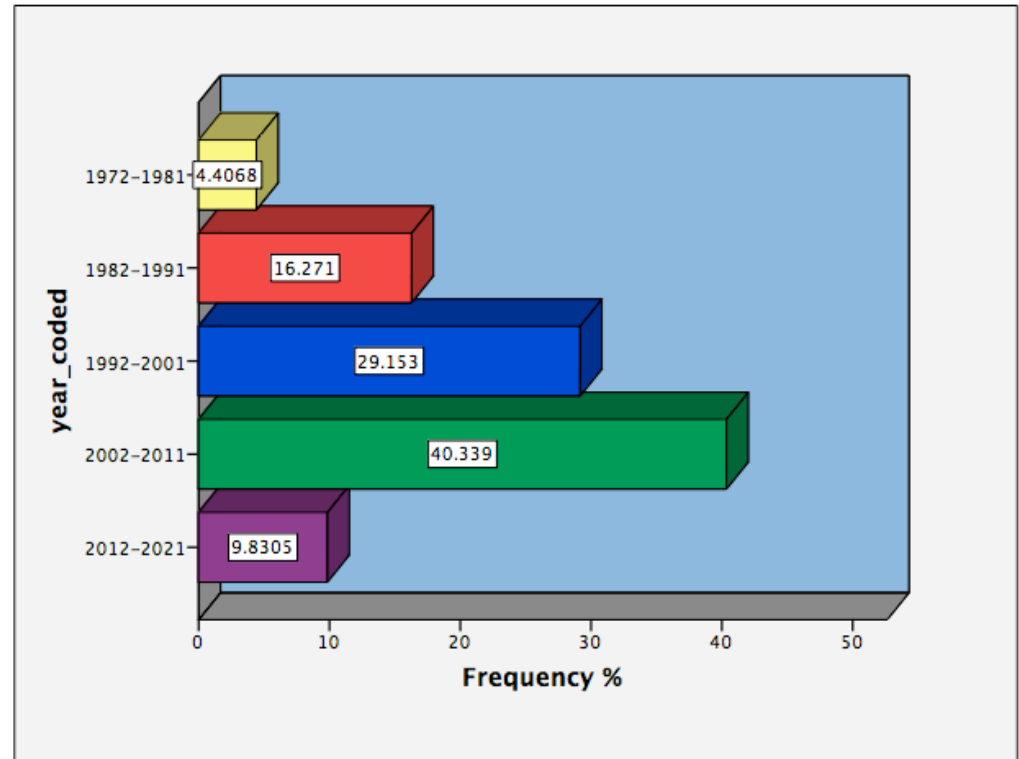
The frequencies distribution of 295 items related to the Anthropological Paradigmatic Approach filed in the repositories of the SoReCom “A.S. de Rosa” @-Library by the “Resource Type”

Resource Type	Frequency	Absolute Frequency %
Book Chapter	98	33,22%
Article in Journal	97	32,88%
Conference Presentation	81	27,45%
Book	9	3,05%
PhD Thesis	5	1,70%
Stand-alone Web document	5	1,70%
Total	295	100%



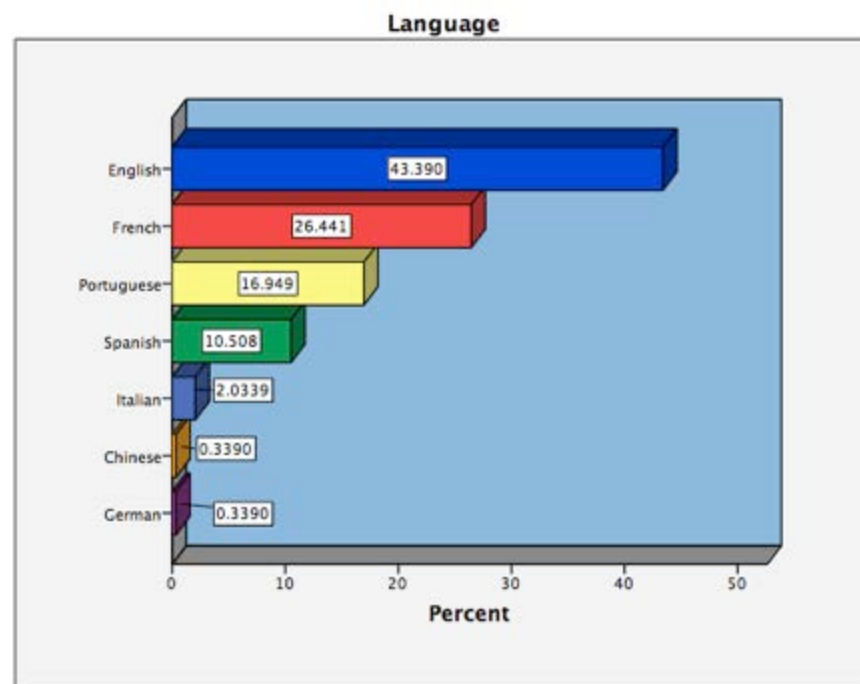
The frequencies distribution of 295 items related to
the Anthropological Paradigmatic Approach
filed in the repositories of the SoReCom “A.S. de Rosa” @-Library
by “Year of Publication regrouped by DECADE”

Year (Decade)	Absolute Frequency	Frequency %
1972-1981	13	4,41%
1982-1991	48	16,27%
1992-2001	86	29,15%
2002-2011	119	40,33%
2011-2021	29	9,83%
Total	295	100%



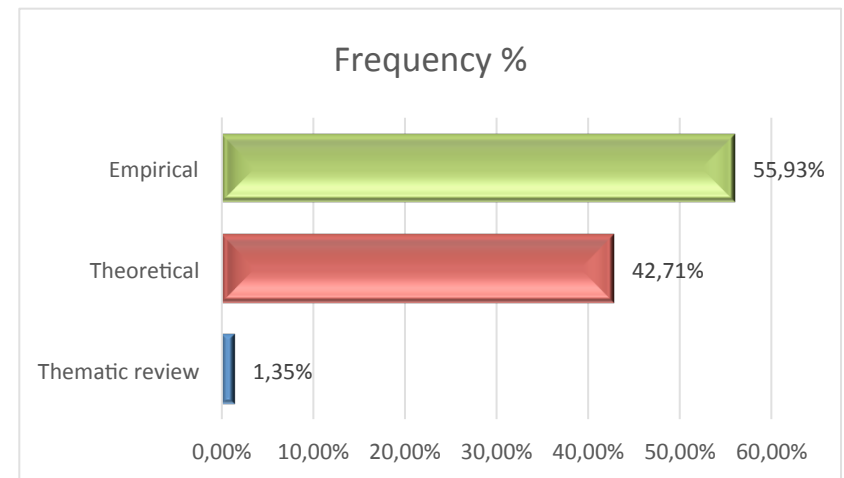
The frequencies distribution of 295 items related to the Anthropological paradigmatic approach
filed in the repositories of the SoReCom “A.S. de Rosa” @-Library by the
“Language of Publication”

Language	Frequency	Frequency %
English	128	43,39%
French	78	26,95%
Portuguese	50	16,95%
Spanish	31	10,51%
Italian	6	2,03%
Chinese	1	0,34%
German	1	0,34%
Total	295	100%



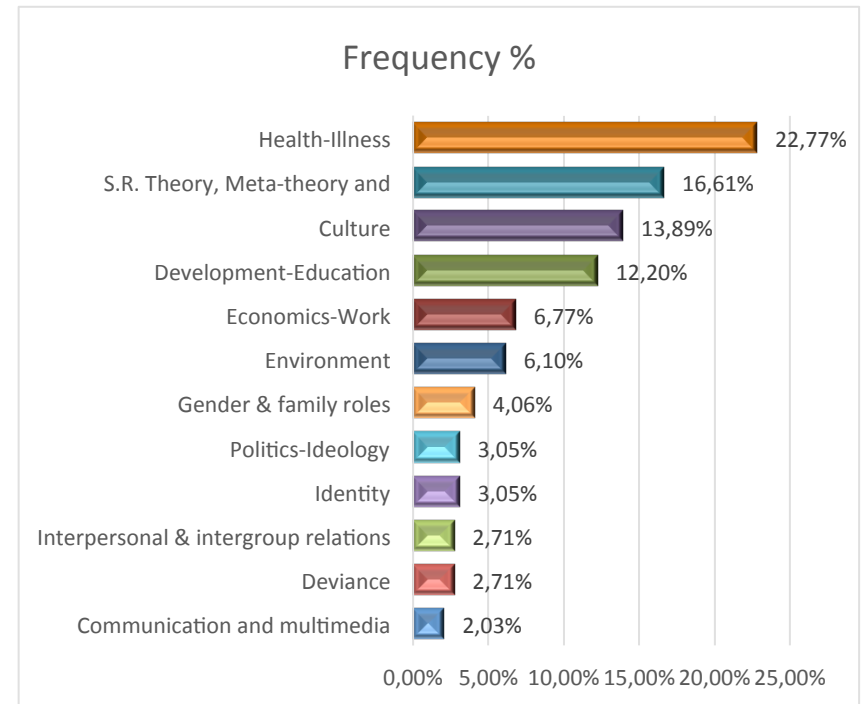
The frequencies distribution of 295 items related to
the Anthropological paradigmatic approach
filed in the repositories of the SoReCom “A.S. de Rosa” @-Library by the
“Type of paper”

Type of paper	Frequency	Frequency %
Empirical	165	55,93%
Theoretical	126	42,71%
Thematic review	4	1,35%
Total	295	100%



The frequencies distribution of 295 items related to the Anthropological paradigmatic approach filed in the repositories of the SoReCom “A.S. de Rosa” @-Library by the “Thematic areas”

Thematic area	Frequency	Frequency %
Health-Illness	79	22,77%
S.R. Theory, Meta-theory and Methodological Issues	49	16,61%
Culture	41	13,89%
Development-Education	36	12,20%
Economics-Work	20	6,77%
Environment	18	6,10%
Gender & family roles	12	4,06%
Identity	9	3,05%
Politics-Ideology	9	3,05%
Deviance	8	2,71%
Interpersonal & intergroup relations and dimensions	8	2,71%
Communication and multimedia	6	2,03%
Total	295	100%

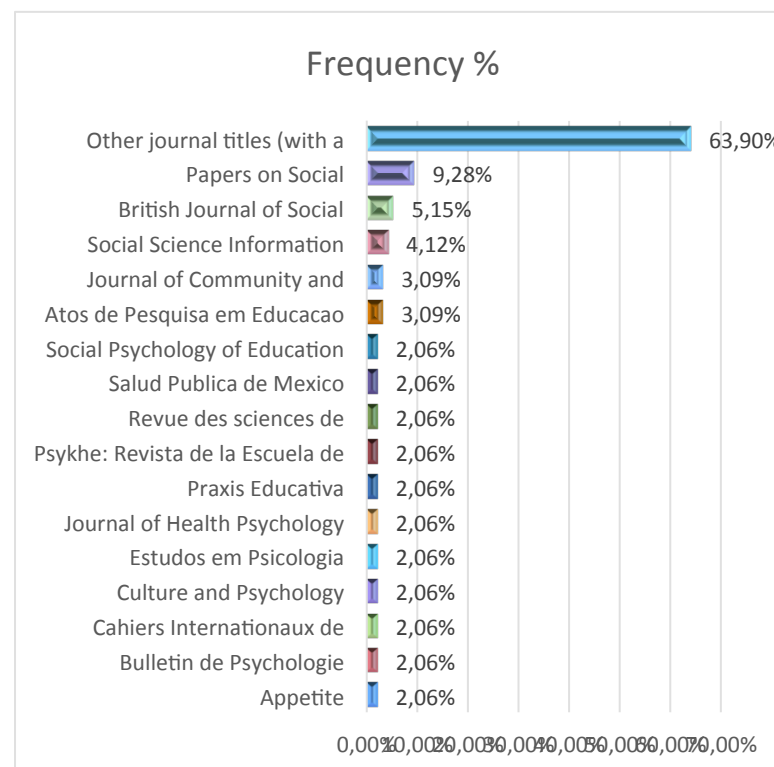


The frequencies distribution of 97 articles related to
the Anthropological paradigmatic approach
filed in the repositories of the SoReCom “A.S. de Rosa” @-Library
by the “Journal Title”



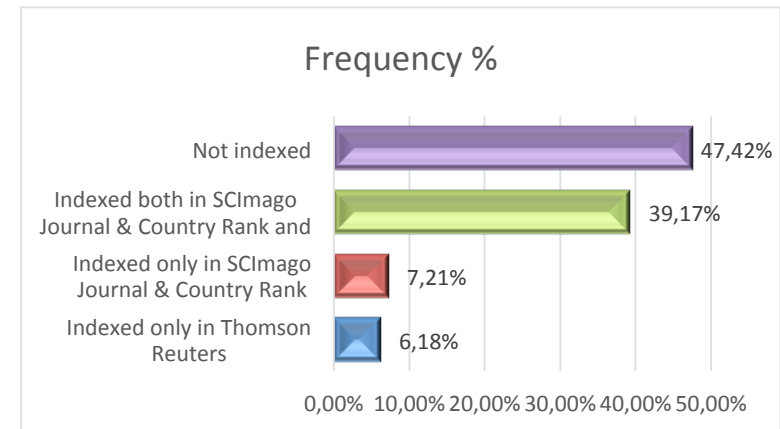
Funded by the European Union

Journal Title	Absolute Frequency	Frequency %
Papers on Social Representations	9	9,28%
British Journal of Social Psychology	5	5,15%
Social Science Information	4	4,12%
Atos de Pesquisa em Educacao	3	3,09%
Journal of Community and Applied Social Psychology	3	3,09%
Appetite	2	2,06%
Bulletin de Psychologie	2	2,06%
Cahiers Internationaux de Psychologie Sociale	2	2,06%
Culture and Psychology	2	2,06%
Estudos em Psicologia	2	2,06%
Journal of Health Psychology	2	2,06%
Praxis Educativa	2	2,06%
Psykhe: Revista de la Escuela de Psicologia	2	2,06%
Revue des sciences de l'education	2	2,06%
Salud Publica de Mexico	2	2,06%
Social Psychology of Education	2	2,06%
Other journal titles (with a frequency of one)	62	63,9%
Total	295	100,00%



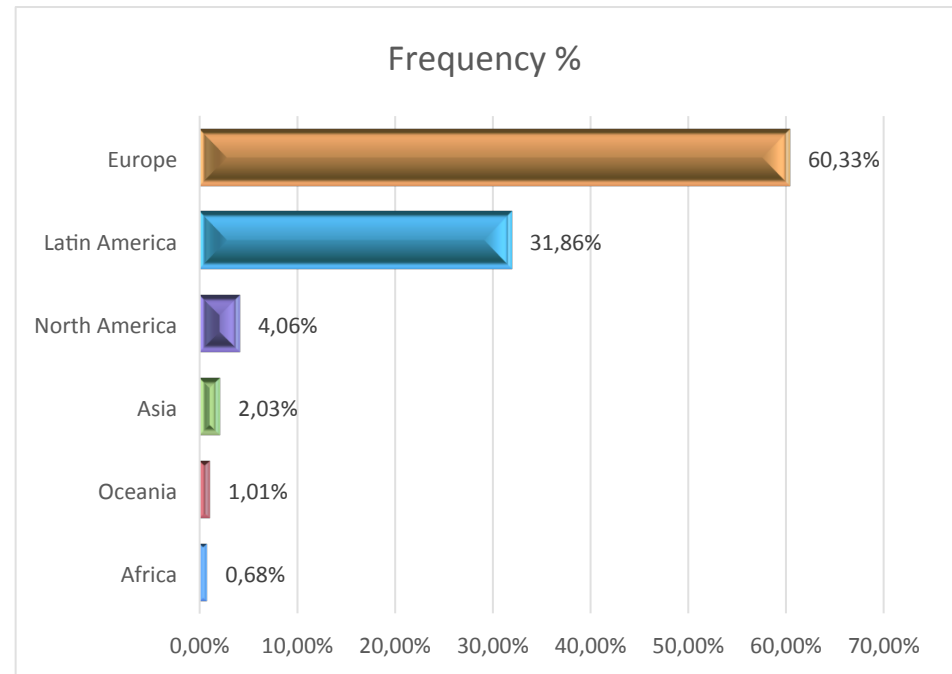
The frequencies distribution of 295 items related to
the Anthropological paradigmatic approach
filed in the repositories of the SoReCom “A.S. de Rosa” @-Library
by the “**Journal Bibliometric Index**”

Indexing	Absolute Frequency	Frequen cy %
Not indexed	46	47,42%
Indexed both in SCImago Journal & Country Rank and Thomson Reuters	38	39,17%
Indexed only in SCImago Journal & Country Rank	7	7,21%
Indexed only in Thomson Reuters	6	6,18%
Total	97	100,00%



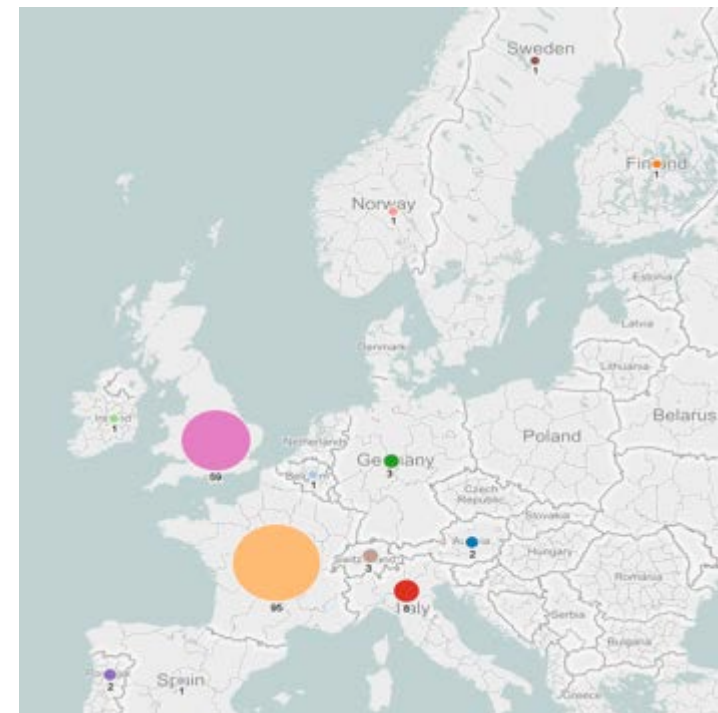
The frequencies distribution of 295 items related to
the Anthropological paradigmatic approach
filed in the repositories of the SoReCom “A.S. de Rosa” @-Library
by the “**Author’s Institution Continent and geo-cultural context**”

Author 1 Institution Continent	Frequency	Frequency %
Europe	178	60,33%
Latin America	94	31,86%
North America	12	4,06%
Asia	6	2,03%
Oceania	3	1,01%
Africa	2	0,68%
Total	295	100,0%



The frequencies distribution of 295 items related to
the Anthropological paradigmatic approach
filed in the repositories of the SoReCom “A.S. de Rosa” @-Library
by the “Continent EUROPE according to the COUNTRY of the author’s institutional affiliation”

Country Name	Absolute Frequency	Frequency %
France	95	53,37%
United Kingdom	59	33,15%
Italy	8	4,57%
Germany	3	1,69%
Switzerland	3	1,69%
Austria	2	1,12%
Portugal	2	1,12%
Belgium	1	0,51%
Finland	1	0,51%
Ireland	1	0,51%
Norway	1	0,51%
Spain	1	0,51%
Sweden	1	0,51%
Total	178	100,0%



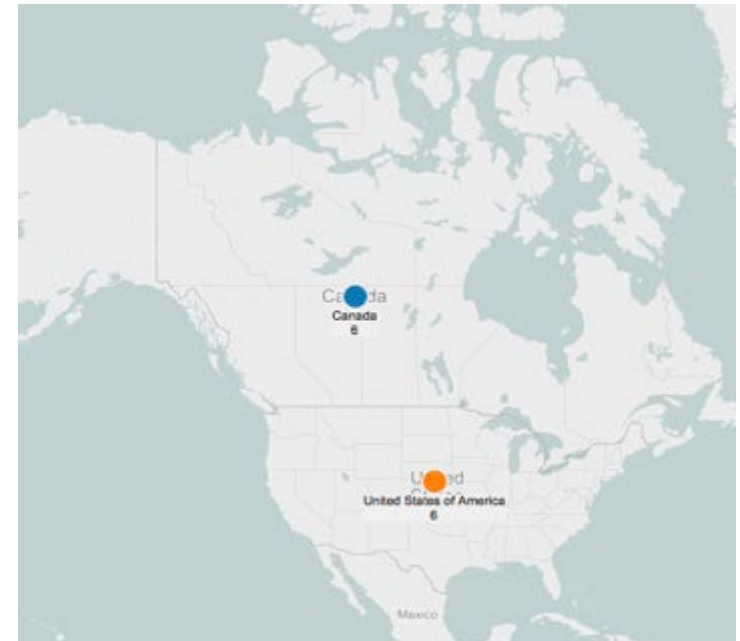
The frequencies distribution of 295 items related to
the Anthropological paradigmatic approach
filed in the repositories of the SoReCom “A.S. de Rosa” @-Library
by the “Continent AMERICA. geo-cultural context LATIN AMERICA according to the
COUNTRY of the author’s institutional affiliation”

Country Name	Absolute Frequency	Frequency %
Brazil	55	58,51%
Mexico	17	18,09%
Argentina	10	10,64%
Chile	4	4,26%
Colombia	4	4,26%
Venezuela	2	2,13%
Cuba	1	1,06%
Peru	1	1,06%
Total	94	100%



The frequencies distribution of 295 items related to
the Anthropological paradigmatic approach
filed in the repositories of the SoReCom “A.S. de Rosa” @-Library
by the “Continent AMERICA: geo-cultural context NORTH AMERICA” according to the
COUNTRY of the author’s institutional affiliation”

Country Name	Absolute Frequency	Frequency %
Canada	6	50%
United States	6	50%
Total	12	100,0%



The frequencies distribution of 295 items related to
the Anthropological Paradigmatic Approach
filed in the repositories of the SoReCom “A.S. de Rosa” @-Library
by the “Continent ASIA according to the COUNTRY of the author’s institutional affiliation”

Country Name	Absolute Frequency	Frequency %
China	2	33,33%
Japan	2	33,33%
Israel	1	16,60%
Philippines	1	16,60%
Total	6	100,0%



The frequencies distribution of 295 items related to
the Anthropological paradigmatic approach
filed in the repositories of the SoReCom “A.S. de Rosa” @-Library
by the “Continent AUSTRALIA & OCEANIA according to the COUNTRY of the author’s
institutional affiliation”

Country Name	Absolute Frequency	Frequency %
New Zealand	2	66,66%
Australia	1	33,33%
Total	3	100,0%



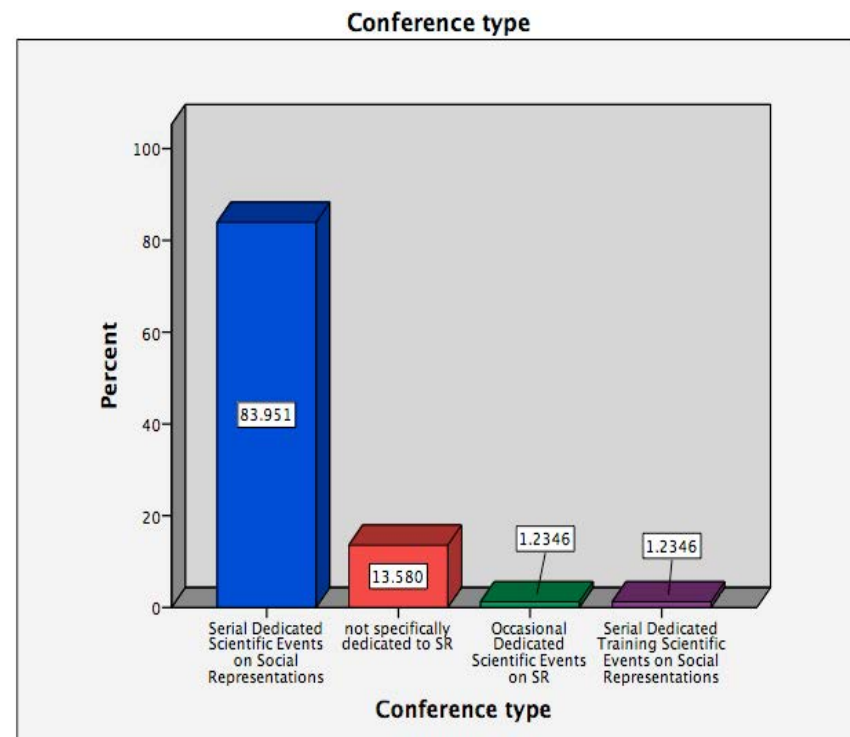
The frequencies distribution of 295 items related to
the Anthropological paradigmatic approach
filed in the repositories of the SoReCom “A.S. de Rosa” @-Library
by the “Continent AFRICA according to the COUNTRY of the author’s institutional affiliation”

Country Name	Absolute Frequency	Frequency %
Ghana	1	50%
South Africa	1	50%
Total	2	100,0%



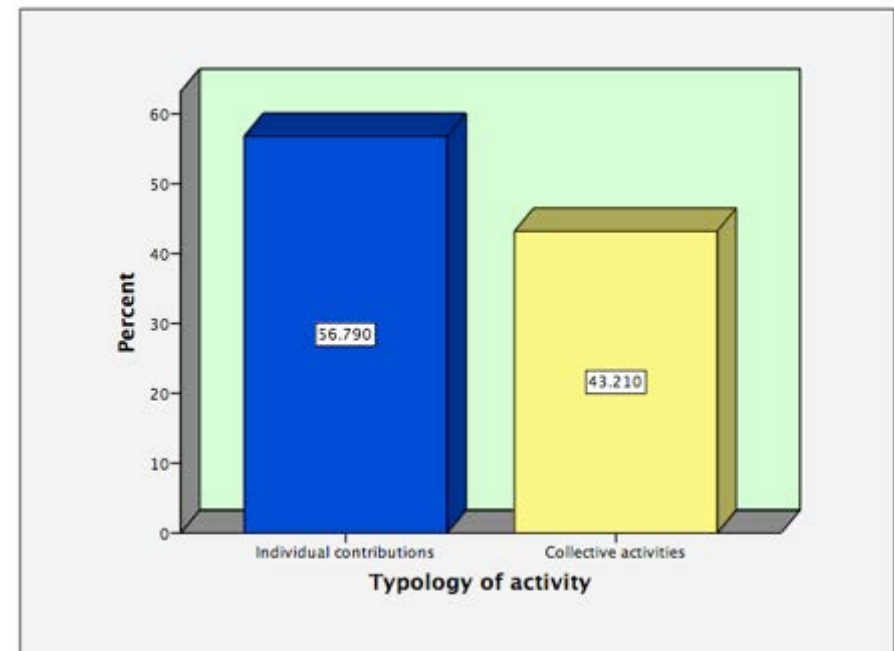
The frequencies distribution of 81 items related to
the Anthropological paradigmatic approach
filed in the repositories of the SoReCom “A.S. de Rosa” @-Library
by the “Conference Type”

Conference Type	Frequency	Frequency %
Serial Dedicated Scientific Events on Social Representations	68	83,95%
Contributions on Social Representations in Conferences of National or International Scientific Associations not specifically dedicated to Social Representations	11	13,60%
Occasional Dedicated Scientific Events on Social Representations	1	1,23%
Serial Dedicated Scientific Events on Social Representations	1	1,23%
Total	81	100%



The frequencies distribution of 295 items related to
the Anthropological Paradigmatic approach
filed in the repositories of the SoReCom “A.S. de Rosa” @-Library
by **Conference Type – Typology of Activities**

Conference Type – Typology of Activities	Frequency	Frequency %
Individual Contribution	46	56,8%
Collective Activities	35	43,2%
Total	81	100,00%



The Chi Square data of 295 items related to the Anthropological paradigmatic approach filed in the repositories of the SoReCom “A.S. de Rosa” @-Library by “Resource Type & Year (decades)”

		Resource_Type						Total
		Article in Journal	Book	Book chapter	Conference presentation	PhD Thesis	Stand alone web doc	
Year	1972-1981	1	1	9	0	0	2	13
	1982-1991	8	3	33	3	0	1	48
	1992-2001	25	4	37	17	2	1	86
	2002-2011	50	0	16	50	2	1	119
	2012-2021	13	1	3	11	1	0	29
Total		97	9	98	81	5	5	295

Chi-Square Tests			
	Value	df	Asymp. Sig. (2-sided)
Pearson Chi-Square	103.236 ^a	20	.000
Likelihood Ratio	106.147	20	.000
Linear-by-Linear Association	1.747	1	.186
N of Valid Cases	295		

The results of the Chi-square test allows us to say that there is a **significant association between the “Resource type” and “Year of publication (decade)”**.

The Chi Square data of 295 items related to the Anthropological paradigmatic approach filed in the repositories of the SoReCom “A.S. de Rosa” @-Library by “List of indexed and not indexed in both SCImago & Thomson Reuters and Year (decade)”

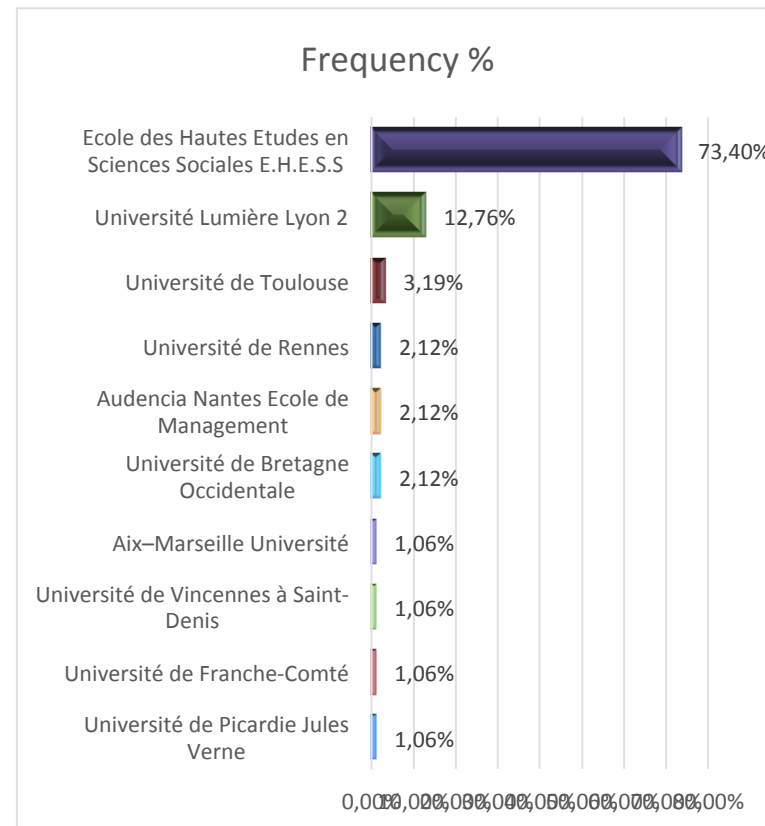
Year*Indexed in Both Crosstabulation				
		Indexed in both		Total
		NO	YES	
Years by decade	1972-1981 (1)	1	0	1
	1982-1991 (2)	1	7	8
	1992-2001 (3)	14	11	25
	2002-2011 (4)	30	20	50
	2012-2021 (5)	6	7	13
Total		52	45	97

Chi-Square Tests			
	Value	df	Asymp. Sig. (2-sided)
Pearson Chi-Square	7.471 ^a	4	.113
Likelihood Ratio	8.394	4	.078
N of Valid Cases	97		
a. 4 cells (40.0%) have expected count less than 5. The minimum expected count is .46.			

The results of the Chi-square test allows us to say that there is a **significant association between the “Year of publication (decade)” and “List of indexed and non-indexed in both SCImago & Thompson Reuters”**

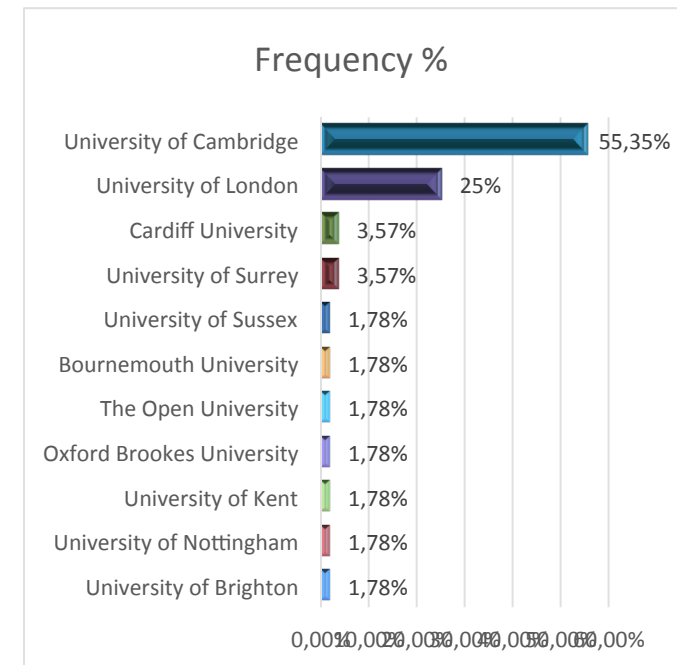
The frequencies distribution of 295 items related to
the Anthropological paradigmatic approach
filed in the repositories of the SoReCom “A.S. de Rosa” @-Library
by the “**First author Institution City and Country**”, France

University	City	Country	Abs. Freq.	Frequency %
Ecole des Hautes Etudes en Sciences Sociales E.H.E.S.S	Paris	France	69	73,4%
Université Lumière Lyon 2	Lyon	France	12	12,76%
Université de Toulouse	Toulouse	France	3	3,19%
Université de Bretagne Occidentale	Brest	France	2	2,12%
Audencia Nantes Ecole de Management	Nantes	France	2	2,12%
Université de Rennes	Rennes	France	2	2,12%
Université de Picardie Jules Verne	Amiens	France	1	1,06%
Université de Franche-Comté	Besançon	France	1	1,06%
Université de Vincennes à Saint-Denis	Saint Denis	France	1	1,06%
Aix-Marseille Université	Marseille	France	1	1,06%
Total			94	100%



The frequencies distribution of 295 items related to
the Anthropological paradigmatic approach
filed in the repositories of the SoReCom “A.S. de Rosa” @-Library
by the “**First author Institution City and Country**”, United Kingdom

University	City	Country	Absolute Frequencies	Frequency %
University of Cambridge	Cambridge	U. K.	31	55,35%
University of London	London	U. K.	14	25%
University of Surrey	Guildford	U. K.	2	3,57%
Cardiff University	Cardiff	U. K.	2	3,57%
University of Brighton	Brighton	U. K.	1	1,78%
University of Nottingham	Nottingham	U. K.	1	1,78%
University of Kent	Canterbury	U. K.	1	1,78%
Oxford Brookes University	Oxford	U. K.	1	1,78%
The Open University	Milton Keynes	U. K.	1	1,78%
Bournemouth University	Poole	U. K.	1	1,78%
University of Sussex	Brighthon	U. K.	1	1,78%
Total			56	100%



Conclusions

- As we have seen from the data presented, the largest production of publications on S.R. within the Anthropological paradigmatic approach comes from Europe, the theory's homeland (60,33%), followed by Latin America (31,86%). These findings are in line with de Rosa's (e.g. de Rosa, 2012), who notes that this trend may be attributed to the fact that psycho-social research in the Anglo-Saxon world is more tightly anchored to the classical experimental paradigm and as such, less open to the interdisciplinary approaches. In contrast, In Europe and Latin America, there is more openness towards the use of qualitative methods. This is also evidenced by the inter-institutional collaborations, which are significantly more frequent within European countries as compared to the other continents.
- As revealed by the frequency distribution by decade, the number of publications on S.R. knows an upward trend: from 4,41% between 1972-1981, to 16,27% between 1982-1991, to 29,15% between 1992-2001, to 40,33% between 2002-2011, which shows the diffusion of the theory continues as it is gaining increased recognition.
- Within the Anthropological paradigmatic approach, we can also see that most of the publications are book chapters (33,22%). However, the number of articles in scientific journals is also increasing by decade, which is indicative of an increasingly wider acknowledgement by the scientific community of the value of S.R.T.

Further Steps

- Our results – extracted from the “big data” filed in the specialized SoReCom “A.S.de Rosa” @-library - will be **further enriched in the more advanced phase of the meta-theoretical analysis**, when the systematic coding of the whole literature (specifically selected according to the thematic focus “**The anthropological and ethnographic approach**”) will be completed in order to detect for each source:
 - the specificity of the **paradigmatic approach** adopted by the author/s;
 - the **construct/s specific of the social representation theory or other theories** addressed in the article/chapter;
 - the reference to to **other disciplinary approach/es** (and the purpose of the authors aimed at integrating or differentiating);
 - the **specific subtopics** addressed within the larger thematic area above mentioned;
 - the **specific methodological plan** (research participants and their characteristics, techniques, data analysis strategies and software, etc. etc.)

Further Steps

- *In the advanced phase of our collaborative research, **the data and meta-data produced by the meta-theoretical analysis will be further processed** using different statistical packages (as SPSS, SPAD-T, Tableau for geo-mapping, etc.) for different purposes.*
- *For example the dependent variables detected by **“the multiple sections of the grid related to the meta-theoretical analysis”** will be crossed with the variables extracted by the first part of the grid related to the **“bibliographic item”**.*
- *The results here presented, that are still at purely descriptive level - once the meta-theoretical analysis of the whole corpus will be completed - will be used for **more sophisticated cross-analyses of the results based on the bibliographic item and on the meta-theoretical analysis**, guided by specific hypotheses.*
- *Interested to identify the **role of the networking in the scientific dynamics of science dissemination**, we will also reconstructed trough the **analysis of co-authorship: “who is working with whom on what and from which country?”***



Funded by the European Union

The frequencies distribution of 295 items
related to the Anthropological paradigmatic approach
filed in the repositories of the SoReCom “A.S. de Rosa” @-Library
by the “**INTER-INSTITUTIONAL COLLABORATIONS**”

World-wide International collaborations in publications within and between continents	Absolute Frequency	Frequency %
Collaborations among institutions in different countries in EUROPE	42	70%
Collaborations among institutions in different countries in LATIN AMERICA	15	25%
Collaborations among institutions in different countries in NORTH AMERICA	2	3.33%
Collaborations among institutions in different countries in ASIA	1	0,6%
Collaborations among institutions in different countries in OCEANIA	0	0%
Collaborations among institutions in different countries in AFRICA	0	0%
Total	60	100%
Intercontinental collaborations in publications with first author belonging to EUROPEAN institutions	45	77,33%
Intercontinental collaborations in publications with first author belonging to LATIN AMERICAN institutions	13	17,33%
Intercontinental collaborations in publications with first author belonging to NORTH AMERICAN institutions	2	2,66%
Intercontinental collaborations in publications with first author belonging to ASIAN institutions	1	1,33%
Intercontinental collaborations in publications with first author belonging to institutions in OCEANIA	1	1,33%
Intercontinental collaborations in publications with first author belonging to AFRICAN institutions	0	0%
Total	75	100,0%



Funded by the European Union

The frequencies distribution of 295 items
related to the Anthropological Paradigmatic Approach
filed in the repositories of the SoReCom “A.S. de Rosa” @-Library
by the “INTER-INSTITUTIONAL INTRA-CONTINENTAL COLLABORATIONS: EUROPE”

International Collaborations among institutions in different countries in EUROPE	Absolute Frequency	Frequency %
Collaborations among institutions in United Kingdom and France	9	21,42%
Collaborations among institutions in Italy and United Kingdom	6	14,28%
Collaborations among institutions in France and Germany	5	11,9%
Collaborations among institutions in France and Switzerland	3	7,14%
Collaborations among institutions in Austria and Germany	3	7,14%
Collaborations among institutions in Switzerland and United Kingdom	3	7,14%
Collaborations among institutions in France and Greece	2	4,76%
Collaborations among institutions in France and Portugal	1	8,33%
Collaborations among institutions in France and Austria	1	8,33%
Collaborations among institutions in Austria and Portugal	1	8,33%
Collaborations among institutions in France, United Kingdom and Denmark	1	8,33%
Collaborations among institutions in United Kingdom and Germany	1	8,33%
Total	42	100,0%

The frequencies distribution of 295 items
related to Social Representations and Communication
filed in the repositories of the SoReCom “A.S. de Rosa” @-Library
by the “INTER-INSTITUTIONAL INTER-CONTINENTAL COLLABORATIONS: EUROPE”



Funded by the European Union

International Collaborations among institutions in different continents with the first author belonging to an institution in EUROPE	Absolute Frequency	Frequency %
Collaborations among institutions in United Kingdom and Italy	11	24,4%
Collaborations among institutions in United Kingdom and Canada	9	20%
Collaborations among institutions in France and United States	9	20%
Collaborations among institutions in France and Brazil	8	17%
Collaborations among institutions in Spain and United States	7	15,5%
Collaborations among institutions in France, Brazil, Portugal and Austria	1	2,2%
Total	45	100,0%



Funded by the European Union



Thank you for your attention!

