

Funded by the European Union

# Do social representations orient practices or practices orient social representations? The relevance of applied societal dimension in the structural approach to social representations

Annamaria Silvana de Rosa, *Ioana Guraliuc*, Laura Dryjanska

European/International Joint PhD in Social Representations and Communication

Research Centre and Multimedia Lab

Sapienza University of Rome (Italy)

<http://www.europhd.eu>

6th International Conference on Applied Psychology

“Prolific intersections between theory and practice”

Iași, 22-24 October 2015



SAPIENZA  
UNIVERSITÀ DI ROMA

# Research Project institutional background

**SoReCom Joint IDP**  
built on the long term  
experience started in 1996 of

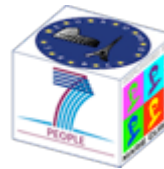
**European/International Joint PhD  
in Social Representations and  
Communication**

Joint Degree awarded by 8  
universities  
in 5 countries  
(IT, FR, RO, CZ, ES)

Collaboration with a wider  
network of universities and  
non-academic partners in EU  
& extra-EU countries

**SoReCom THEmatic NETwork  
of Excellence**

“network of networks” that promotes co-  
operation between academic, professional  
research and commercial institutions and  
facilitates the dissemination of scientific results  
throughout Europe and around the world



Funded by the European Union

## Institutional History of the European/International Joint PhD in S.R. & C.



**The SoReCom Joint-IDP  
(2013-2017)**

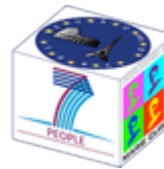
**just the last step of  
more that 20 years of  
Institutional History and Recognition  
(1993-2015)**

## The first “i” of the triple “i”: the International dimension



1993:

**13 Universities in 9 EU countries  
founders of the  
European/International Joint PhD in  
Social Representations and  
Communication**



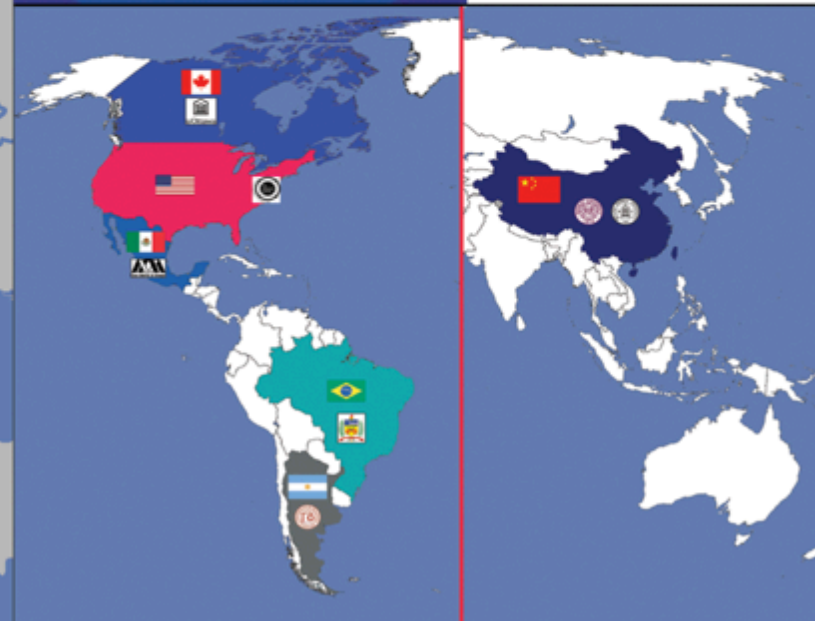
Funded by the European Union

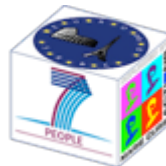
## European/International Joint PhD in Social Representations and Communication in 2015

25 academic and 4 non-academic partners in 12 EU and 6 extra-European Countries



- 25 universities
- 1 National Research Centre
- 1 multinational company
- 2 SMEs





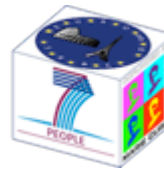
Funded by the European Union

# SoReCom Joint-IDP Partnership

## 14 Universities and 3 non-academic partners in 8 EU and 6 extra-Eu Countries

Project Beneficiary and Coordinator	Università degli Studi Roma La Sapienza (Italy)
<b>Academic Associate Partners</b>	<ol style="list-style-type: none"> <li>1. Masarykova Univerzita (Czech Republic)</li> <li>2. Universitatea Alexandru Ioan Cuza (Romania)</li> <li>3. Universität Wien (Austria)</li> <li>4. Universidad del Pais Vasco (Spain)</li> <li>5. Universidad de Valencia (Spain)</li> <li>6. Université de Genève (Switzerland)</li> <li>7. Université de Lausanne (Switzerland)</li> <li>8. University of Ottawa (Canada)</li> <li>9. City University of New York (USA)</li> <li>10. Universidad de Belgrano (Argentina)</li> <li>11. Universidade Federal de Santa Catarina (Brazil)</li> <li>12. Universidad Autonoma Metropolitana (Mexico)</li> <li>13. Nankai University (China)</li> </ol>
<b>Non-Academic Associate Partners</b>	<ol style="list-style-type: none"> <li>1. Institut Français des Sciences et Technologies des Transports, Aménagement et des Réseaux (France)</li> <li>2. ContattoLavoro s.r.l. (Italy)</li> <li>3. Conny Ericsson Försäljning AB (Sweden)</li> </ol>





Funded by the European Union

## The SoReCom Joint-IDP Network





*Marie  
Curie Actions*

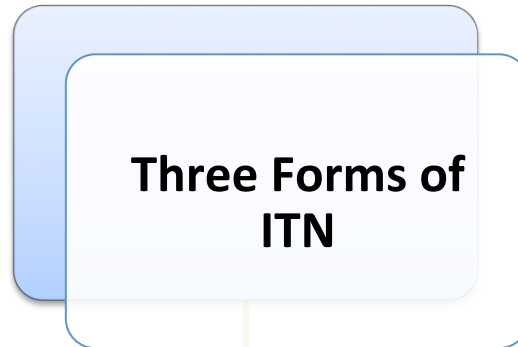
## Three Forms of ITN

**Multi-ITN: Multi-  
partner training  
network**

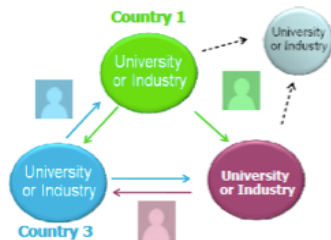
**EID: European  
Industrial Doctorate**

**IDP (now EJD):  
Innovative Doctoral  
Programme –  
European “Joint”  
Doctorate**





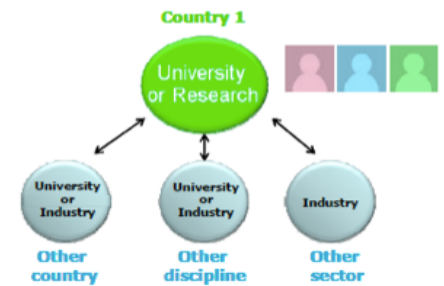
## Multi-ITN

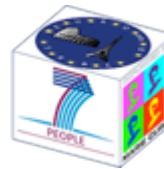


## EID

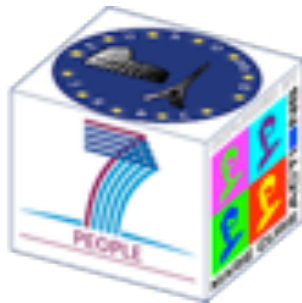


## IDP





Funded by the European Union



"Joint" Diplomas  
the end starts from  
the beginning



# I. Scientific aspects

## SoReCom Joint-IDP main objectives

- Attract the best early-stage researchers from abroad to **undertake their research training at the European/International Joint PhD in S.R. & C. Research Centre and Multimedia Lab in Rome (Italy)** , as mono-contractor Institution and project leader, and at the host Institutions in other 7 EU and 6 extra EU countries during their secondment
- **Involve** internationally recruited, trained, and monitored **early-stage researchers in a cooperative unified research program**
- **Provide doctoral training in the field of Social Representations** by structured training-through-research in an internationally recognised networked research environment
- **Offer** via one integrated contract **activities that until 2013 have been funded by several different contracts** : International Lab Meetings, International Summer Schools, Research Activities, development of the *SoReCom "A.S. de Rosa" @-library*, etc.
- **Promote European excellence beyond the boundaries of the European Union** in synergy with well-reputed scientists and research centres in some non-EU countries of great strategic value for the expansion of the scientific field led by European scientists
- Make **research careers** more attractive via **cooperation between academia, public research centres, and SMEs**

## I. Scientific aspects

# Unified research framework

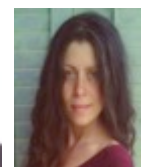
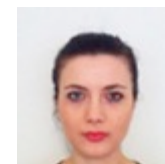
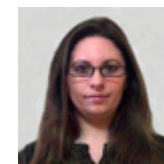
- Main characteristic of the **Social Representations supra-disciplinary field** is its great consistency in terms of epistemological and theoretical inspiration and its **rich diversity** from the **paradigmatic point of view**, in terms of **methodological approaches**, from the **thematic point of view** and with respect to the **applied contexts and domains of expert and lay knowledge production and transmission**.
- The objective of this **multi-year research program – launched in 1994** by the project leader - is to **evaluate the impact of the scientific production** driven by the **Social Representations theory in the social arena faced with social demand**. The aim is to **take stock of the scientific field developed in more than 50 years** by conducting an **empirical meta-theoretical analysis of the literature** on Social Representations, **mapping the development of different paradigms**, the related **research methods**, the **thematic areas** and their impact on the various applied fields within the multi-generational community of scientists and across different geo-cultural contexts.
- The **unified research project framework** have been **articulated into 13** precise objectives concerning the **specific research lines** to be developed by each recruited ESR

# 13 ESRs' Individual Research Focus



Funded by the European Union

Full Name	Nationality	Research Project
<b>Guraliuc Ioana</b>	Romania	Genesis and development of the <b>"structural paradigmatic approach"</b> in more than 50 years of social representation theory: mapping theory, methods, thematic areas and applications
<b>Gjorgjioska Marija Adela</b>	Macedonia	Genesis and development of the <b>"socio-dynamic paradigmatic approach"</b> in more than 50 years of social representation theory: mapping theory, methods, thematic areas and applications
<b>Kukharava Maryia</b>	Belorussia	Genesis and development of the <b>"dialogical, conversational and narrative paradigmatic approaches"</b> in more than 50 years of social representation theory: mapping theory, methods, thematic areas and applications
<b>Arhiri Laura</b>	Romania	Genesis and development of the <b>"anthropological and ethnographic paradigmatic approach"</b> in more than 50 years of social representation theory: mapping theory, methods, thematic areas and applications
<b>Pastorino Agnese</b>	Italy	Genesis and development of the <b>"modelling paradigmatic approach"</b> in more than 50 years of social representation theory: mapping theory, methods, thematic areas and applications
<b>Tomicic Ana</b>	Croatia	Mapping the impact and dissemination of the social representation theory across different geo-cultural contexts: <b>"Europe", the theory's homeland</b>
<b>Gherman Mihaela Alexandra</b>	Romania	Mapping the impact and dissemination of the social representation theory across different geo-cultural contexts: <b>"North-America and other continents (Oceania, Asia, Africa)", the new emerging scenarios</b>
<b>Teresa Forte</b>	Portugal	Mapping the impact and dissemination of the social representation theory across different geo-cultural contexts: <b>"Latin America", the most fertilised scenario</b>
<b>Ramazanovna Aminat</b>	Russia	Taking stock of the literature in the thematic field of <b>"Science, Social Representations and Communication"</b>
<b>De Madaria Borja</b>	Spain	Taking stock of the literature in the thematic field of <b>"Social Representations and Environment"</b>
<b>Panzaru Gabriela</b>	Romania	Taking stock of the literature in the thematic field of <b>"Social Representations, Economy, Advertising, Marketing and Organizational Contexts"</b>
<b>Miguel Aguilar Carlos Filiberto</b>	Mexico	Taking stock of the literature in the thematic field of <b>"Social Representations, Community &amp; Health"</b>
<b>Berardi Filomena</b>	Italy	Taking stock of the literature in the thematic field of <b>"Social Representations &amp; Politics: Multidimensional identities, intergroup relations, social movements and active minorities"</b>



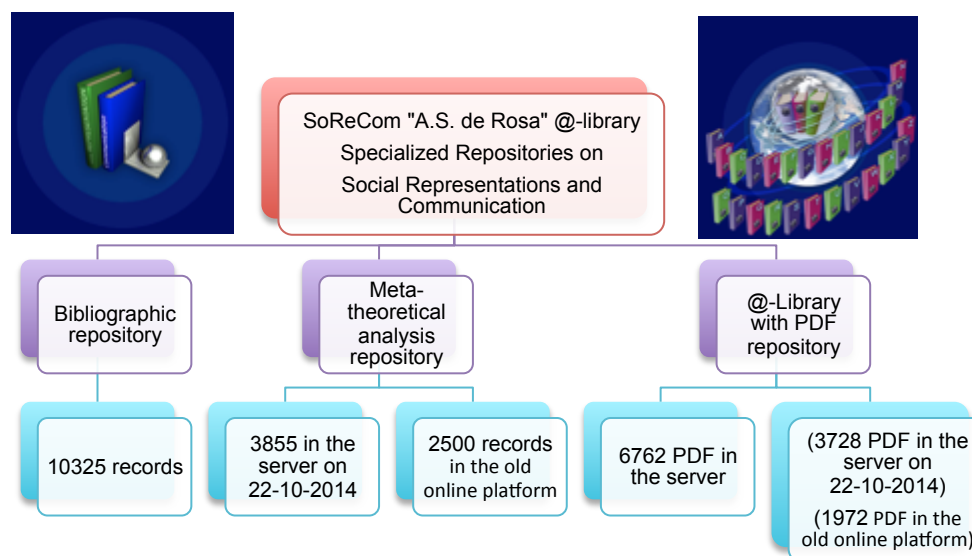
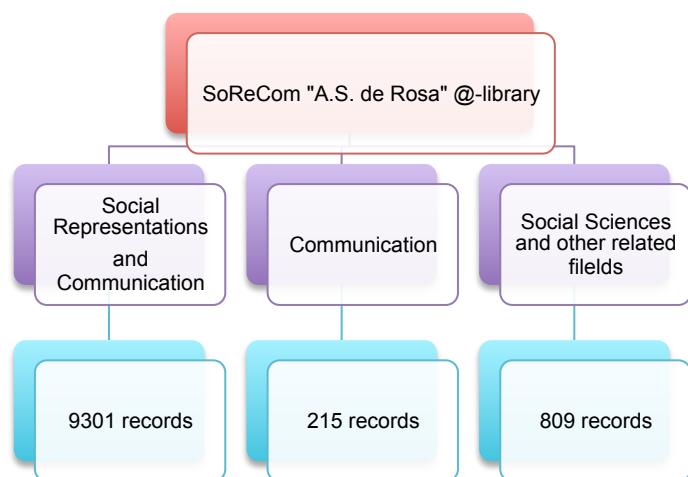




Funded by the European Union

# Source of the big-data and meta-data

- As of July 2015 the total of 10,325 records
- Total of 9301 publications present in the **So.Re.Com "A.S. de Rosa" @-Library** that refer to social representations and communication
- Based on the selected information concerning the bibliographic item
- Destined to grow as a result of our collaborative team work in the future

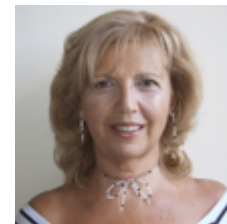
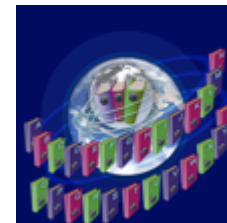


# The SO.RE.COM. “A.S. de Rosa” @-LIBRARY



Funded by the European Union

- A multiform digital environment of integrated relational data-bases conceived in the logic of the **semantic web**, including a series of web interfaces, aimed to integrate:
- A) **documentation services** (bibliographic repository, meta-theoretical analysis repository, intelligent @-Library)
- B) **networking** (interactive web-videoconference, on-line So.Re.Com. virtual community)
- C) **research training** (European/International Joint PhD “Virtual Campus”: video-courses in streaming, distant tutoring and co-tutoring, on-line trainee evaluation, etc. <http://www.europhd.eu>);
- It includes over **10,000 references**, and a vast and growing collection of bibliographic entries and a series of specific web-tools designed by **Annamaria Silvana de Rosa**, who is also the creator and the program director of the European/International Joint PhD in Social Representations and Communication and of the So.Re.Com. THEmatic NETwork).



## II. Methodology

- Specific web-tools have been designed by de Rosa for the meta-theoretical analysis and the related web-inventories) implemented in the institutional website (<http://www.europhd.eu>) currently in transition into a new digital platform of the **So.Re.Com. “A.S. de Rosa” @-library**



Funded by the European Union

# Research tools

The **grid for meta-theoretical analysis of literature on Social Representations** is organized in **five main areas**:

- **Theoretical reference to Social Representations constructs** monitors whether a publication refers to Social Representations Theory in a very generic way or addresses specific paradigmatic elements of the theory (i.e. the genesis, processes, functions, structure, transmission, and transformation of Social Representations) or whether the contribution refers to the theory itself as an object of critical analysis (meta-theory);
- **Theoretical reference to other constructs and theories** identifies whether the publication refers to other constructs, concepts and theories related to Social Representation as well as the focus of the reference: integration, differentiation, comparison, replacement;
- **Thematic analysis** categorizes the contents of empirical contributions by identifying the general thematic areas (i.e. health, environment, etc.) and the specific object of each study (i.e. AIDS, pollution, etc.), as well the specific typology (closed, open, polemic) of the Social Representations;
- **Methodological profile of each study** (its research design, its location, its nature, instruments for data collection, channels used as source of information, techniques for data analysis) and characteristics of the selected population (size of sample, variables considered, unit of analysis);
- **Paradigmatic coherence** between the theoretical assumptions and the methodological research design.

### III. Research goals

- Built on an on-going project led since 20 years by the director of the *European PhD on Social Representations and Communication Research Centre and Multimedia Lab* who has ***designed specific web-tools (including the on-line grid for the meta-theoretical analysis and the related web-inventories)*** for the purpose of conducting an empirical meta-theoretical analysis of the literature on Social Representations, ***the specific project aim is to take stock of the scientific field developed in more than 50 years by conducting an empirical meta-theoretical analysis of the literature on Social Representations, mapping its development, the related research methods, the thematic areas and their impact on the various applied fields within the multi-generational community of scientists and across different geo-cultural contexts.***

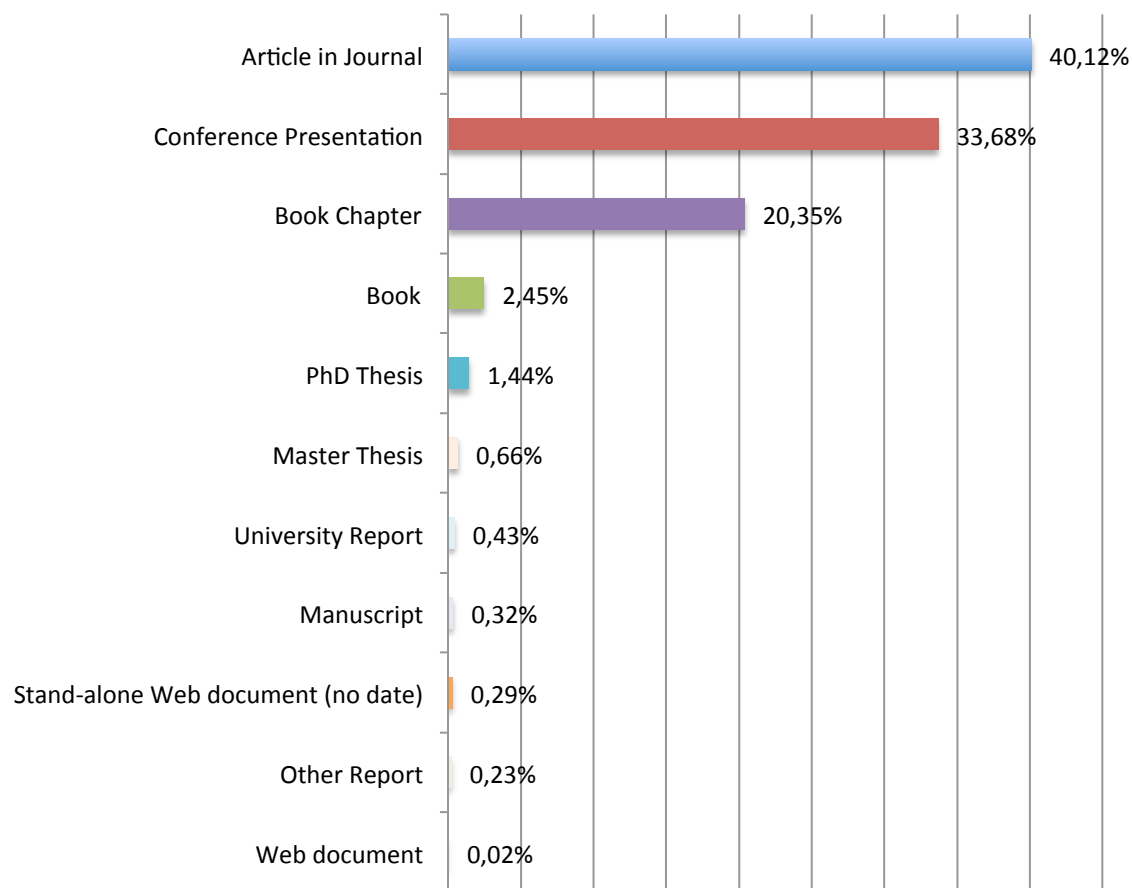




Funded by the European Union

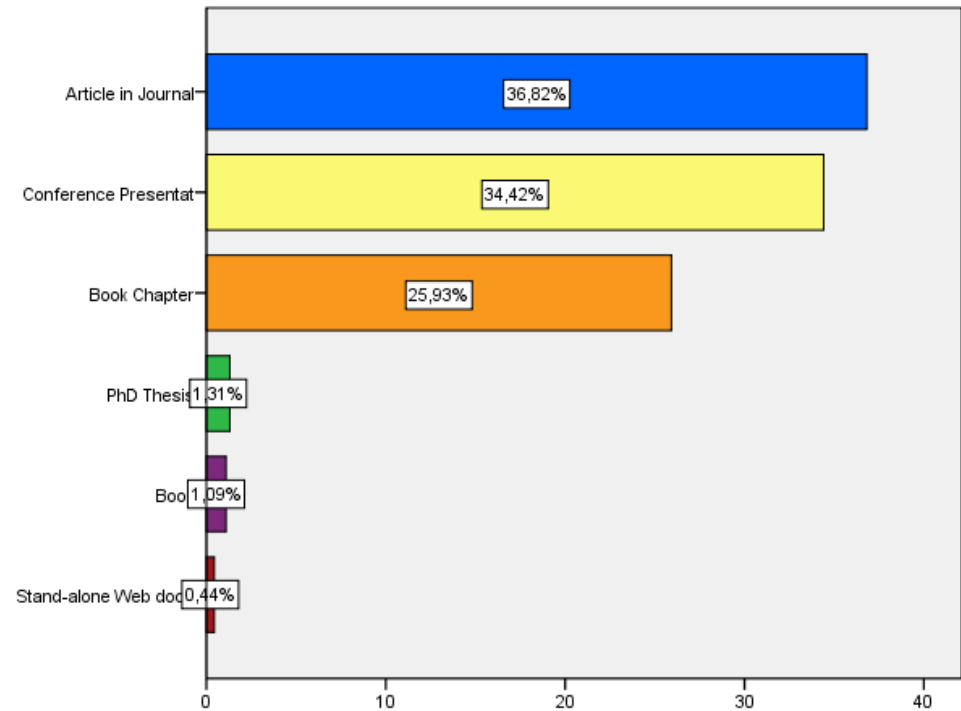
# The frequencies distribution of 9301 items specifically related to **Social representations and Communication** filed in the repositories of the SoReCom “A.S. de Rosa” @-Library by the “**Resource Type**”

Resource Type	Absolute Frequency	Frequency %
Article in Journal	3732	40,12%
Conference Presentation	3133	33,68%
Book Chapter	1893	20,35%
Book	228	2,45%
PhD Thesis	134	1,44%
Master Thesis	61	0,66%
University Report	40	0,43%
Manuscript	30	0,32%
Stand-alone Web document (no date)	27	0,29%
Other Report	21	0,23%
Web document	2	0,02%
Total	9301	100,0%



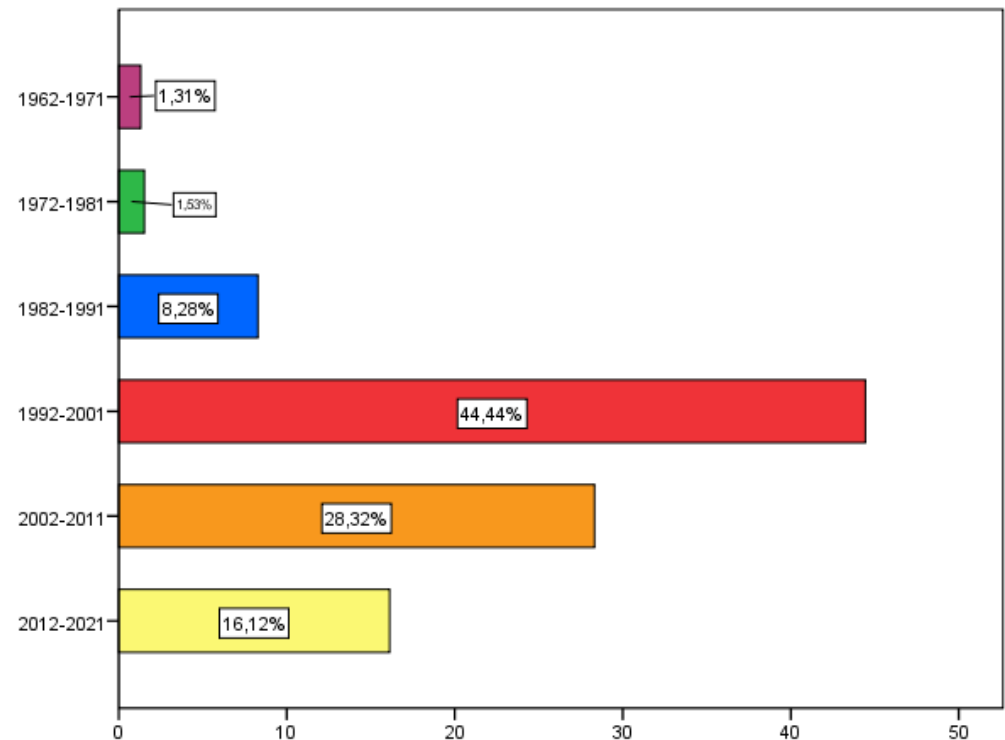
# The frequencies distribution of 459 items related to structural paradigmatic approach filed in the repositories of the SoReCom “A.S. de Rosa” @-Library by the “Resource Type”

Resource Type	Absolute Frequency	Frequency %
Article in Journal	169	36,8%
Conference presentation	158	34,4%
Book Chapter	119	25,9%
PhD Thesis	6	1,3%
Book	5	1,1%
Stand-alone Web document	2	0,4%
Total	459	100%



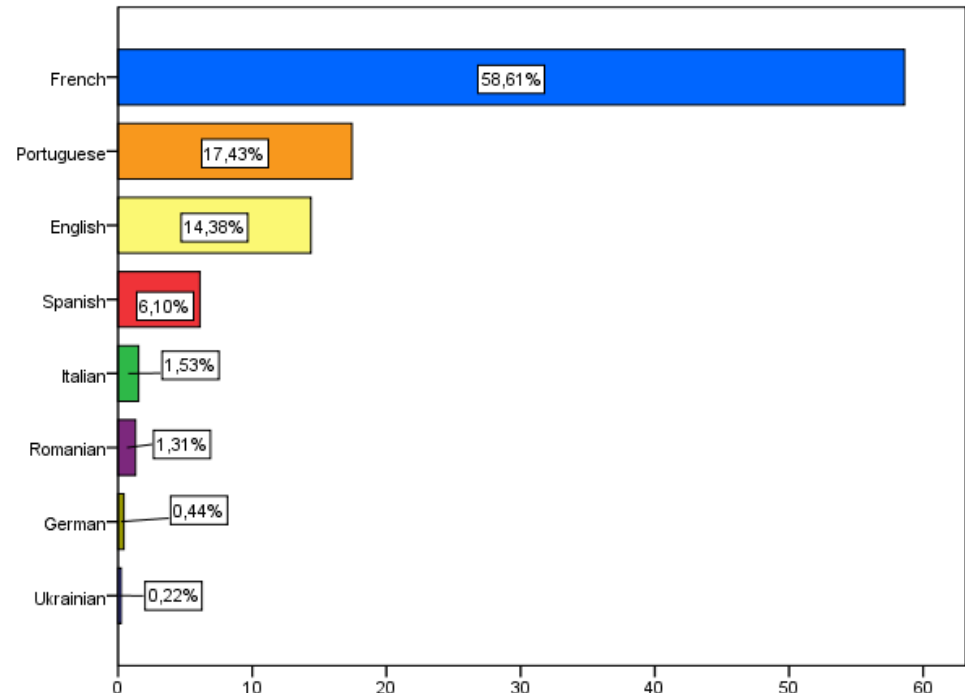
# The frequencies distribution of 459 items related to structural paradigmatic approach filed in the repositories of the SoReCom “A.S. de Rosa” @-Library by the “Year of Publication regrouped by DECADE”

Year (Decade)	Absolute Frequency	Frequency %
1952-1961	0	0,00%
1962-1971	6	1,31%
1972-1981	7	1,53%
1982-1991	38	8,28%
1992-2001	204	44,44%
2002-2011	130	28,32%
2012-2021	74	16,12%
Total	459	100%



# The frequencies distribution of 459 items related to structural paradigmatic approach filed in the repositories of the SoReCom “A.S. de Rosa” @-Library by the “Language of Publication”

Language	Absolute Frequency	Frequency %
French	269	58,61 %
Portuguese	80	17,43 %
English	66	14,38 %
Spanish	28	6,10 %
Italian	7	1,53 %
Romanian	6	1,31 %
German	2	0,44 %
Ukrainian	1	0,22 %
Total	459	100%



The frequencies distribution of 459 items related to  
structural paradigmatic approach  
filled in the repositories of the SoReCom “A.S. de Rosa” @-Library  
by the “Type of paper — empirical topics”

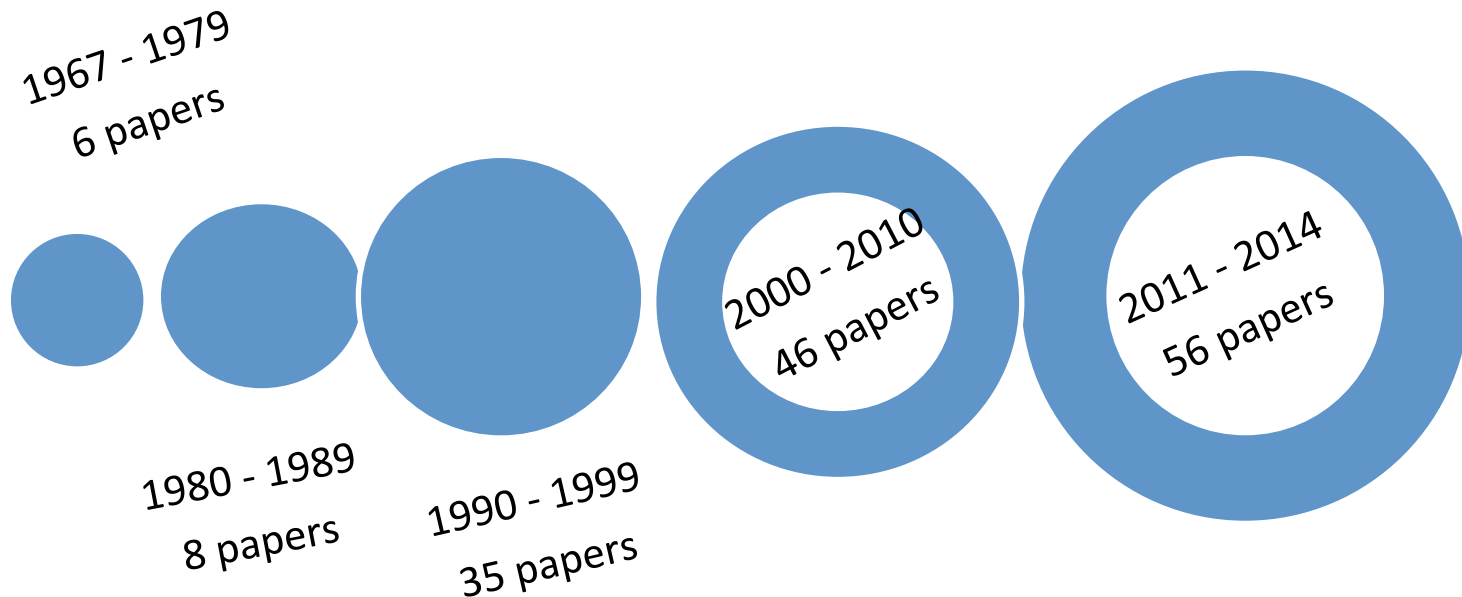
From 459 items -> 151 items have an empirical topic



The frequencies distribution of 151 items related to  
structural paradigmatic approach  
filled in the repositories of the SoReCom “A.S. de Rosa” @-Library  
by the “**Type of paper – empirical topics**”

Years	Topics
1967-1979	Experimental research; conflictual interaction; game situation; group creativity; hierarchical groups
1980 - 1989	Game situation; behaviour; SR of artisan; SR of work; SR of economic inequalities; SR of power
1990 - 1999	Education; economy; gypsy; drug addiction; gender power; eating disorders; hunting; ideological aggression; intelligence; love
2000 - 2010	Violence; gypsy; depression; tourisme (ecotourisme); money; drougue; sexuality; globalisation; road security; nursing; death; bioethics; unemployment; mental diseases
2011 - 2014	EDUCATION; health – AIDS; domestic violence; cyberbullying; family; gender; virtual consumption; virtual economy

The frequencies distribution of 151 items related to  
structural paradigmatic approach  
filled in the repositories of the SoReCom “A.S. de Rosa” @-Library  
by the “Empirical papers” by “Decade — number of papers”



The frequencies distribution of 459 items related to  
structural paradigmatic approach  
filled in the repositories of the SoReCom “A.S. de Rosa” @-Library  
by the **Journal Title**

Journal Title	Absolute Frequency	Frequency %
Cahiers Internationaux de Psychologie Sociale	20	11,8 %
Papers on Social Representations	19	11,2 %
Bulletin de Psychologie	12	7,1 %
Revue Internationale de Psychologie Sociale	12	7,1 %
Psihologia Socială	7	4,1 %

The frequencies distribution of 459 items related to  
structural paradigmatic approach  
filled in the repositories of the SoReCom “A.S. de Rosa” @-Library  
by the “**Journal Bibliometric Index**”

Indexing	Absolute Frequency	Frequency %
Not indexed Scopus_SCIImago	97	57 %
Not Indexed in Thompson & Reuters	107	63 %
Indexed both in SCImago Journal & Country Rank and Thomson Reuters	62	37 %
Indexed only in SCImago Journal & Country Rank	10	6 %
	169	100,00%

The frequencies distribution of 459 items related to  
structural paradigmatic approach  
filled in the repositories of the SoReCom “A.S. de Rosa” @-Library  
by the “List of indexed Journal In both bibliometrics data bases  
by Ranking classes”

Journal	SJR	Impact Factor
Universitas Psychologica	0,265	0,211
Theory and Psychology	0,392	0,988
Telematics and Informatics	0,412	0,705
Swiss Journal of Psychology	0,39	0,755
Society and Natural Resources	0,664	1,065
Social Indicators Research	0,713	1,452
Social Behavior and Personality	0,252	0,372
Revue Internationale de Psychologie Sociale	0,149	0,081
Revue Française de Sociologie	0,326	0,137
Revista Latino-Americana de Enfermagem	0,633	0,54

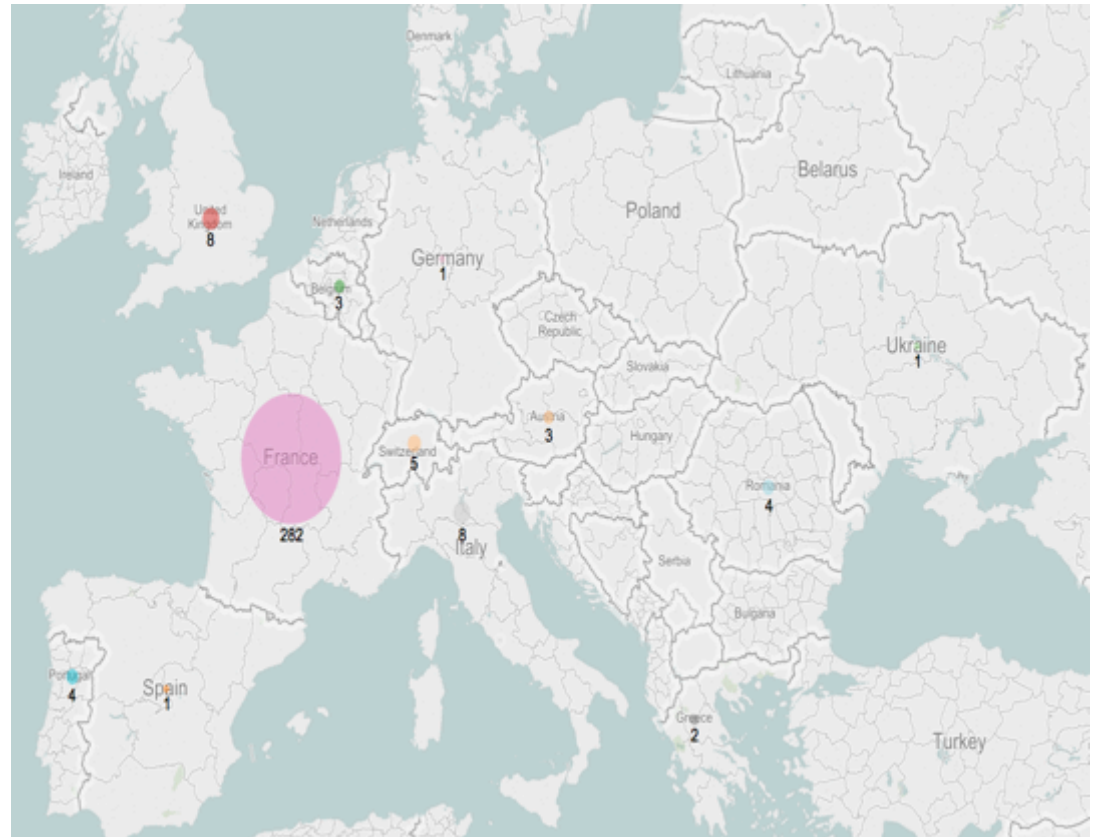


The frequencies distribution of 459 items related to  
structural paradigmatic approach  
filled in the repositories of the SoReCom “A.S. de Rosa” @-Library  
by the “Author’s Institution Continent and geo-cultural context”

Author 1 Institution Continent	Frequency	Frequency %
Europe	332	72 %
Latin America	115	25%
North America	1	0,22 %
Asia	6	1,31 %
Oceania	1	0,22 %
Africa	4	0,87 %
Total	459	100,0%

The frequencies distribution of 459 items related to  
structural paradigmatic approach  
filled in the repositories of the SoReCom “A.S. de Rosa” @-Library  
by the “Continent EUROPE according to the COUNTRY of the author’s institutional affiliation”

Country Name	Absolute Frequency	Frequency %
France	282	84,94%
Spain	11	3,31%
Italy	8	2,41%
United Kingdom	8	2,41%
Switzerland	5	1,51%
Portugal	4	1,20%
Romania	4	1,20%
Austria	3	0,90%
Belgium	3	0,90%
Greece	2	0,60%
Germany	1	0,30%
Ukraine	1	0,30%
Total	332	100,00%



The frequencies distribution of 459 items related to  
structural paradigmatic approach  
filled in the repositories of the SoReCom “A.S. de Rosa” @-Library  
by the “Continent AMERICA. geo-cultural context LATIN AMERICA according to the COUNTRY of  
the author’s institutional affiliation”

Country Name	Absolute Frequency	Frequency %
Brazil	97	84,35%
Colombia	6	5,22%
Mexico	6	5,22%
Argentina	5	4,35%
Chile	1	0,87%
Total	115	100,00%



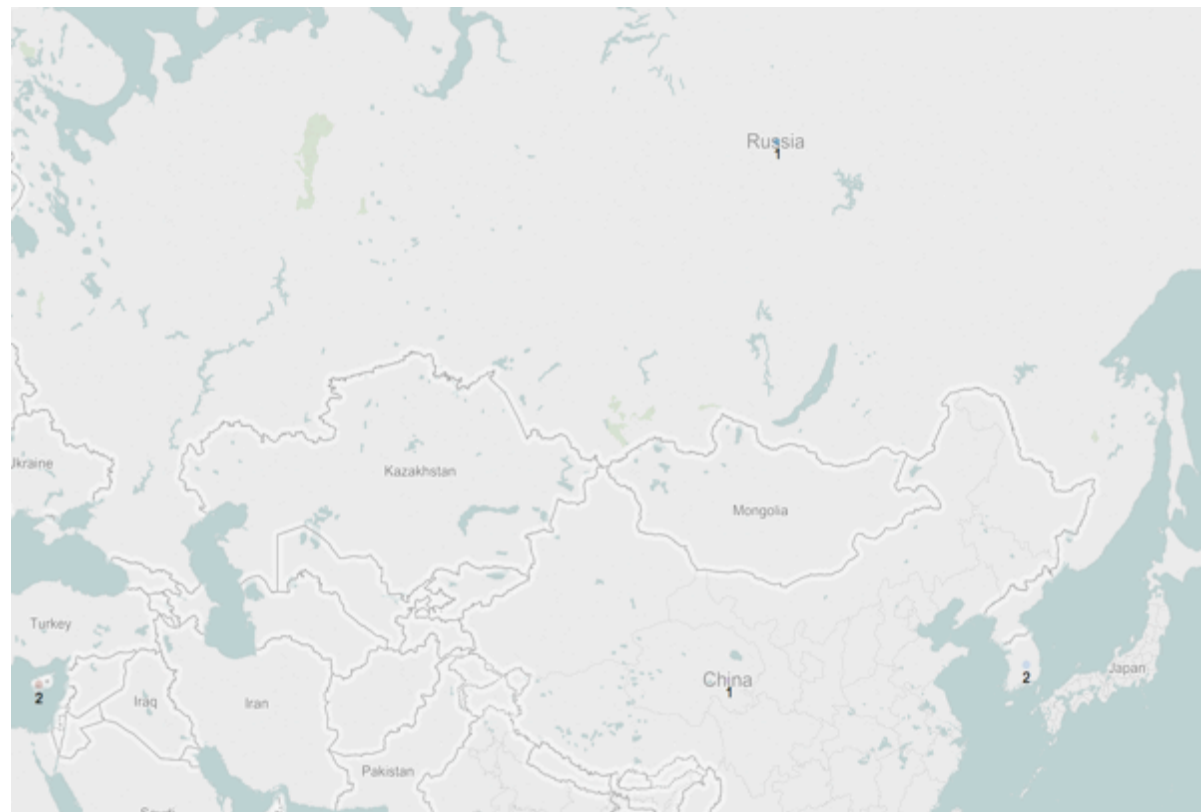
The frequencies distribution of 459 items related to  
structural paradigmatic approach  
filled in the repositories of the SoReCom “A.S. de Rosa” @-Library  
by the “Continent AMERICA: geo-cultural context NORTH AMERICA”

Country Name	Absolute Frequency	Frequency %
Canada	1	100,00%
Total	1	100,00%



The frequencies distribution of 459 items related to  
structural paradigmatic approach  
filled in the repositories of the SoReCom “A.S. de Rosa” @-Library  
by the “Continent ASIA” according to the COUNTRY of the author’s institutional affiliation”

Country Name	Absolute Frequency	Frequency %
South Korea	2	33,33%
Cyprus	2	33,33%
China	1	16,67%
Russia	1	16,67%
Total	6	100,00%



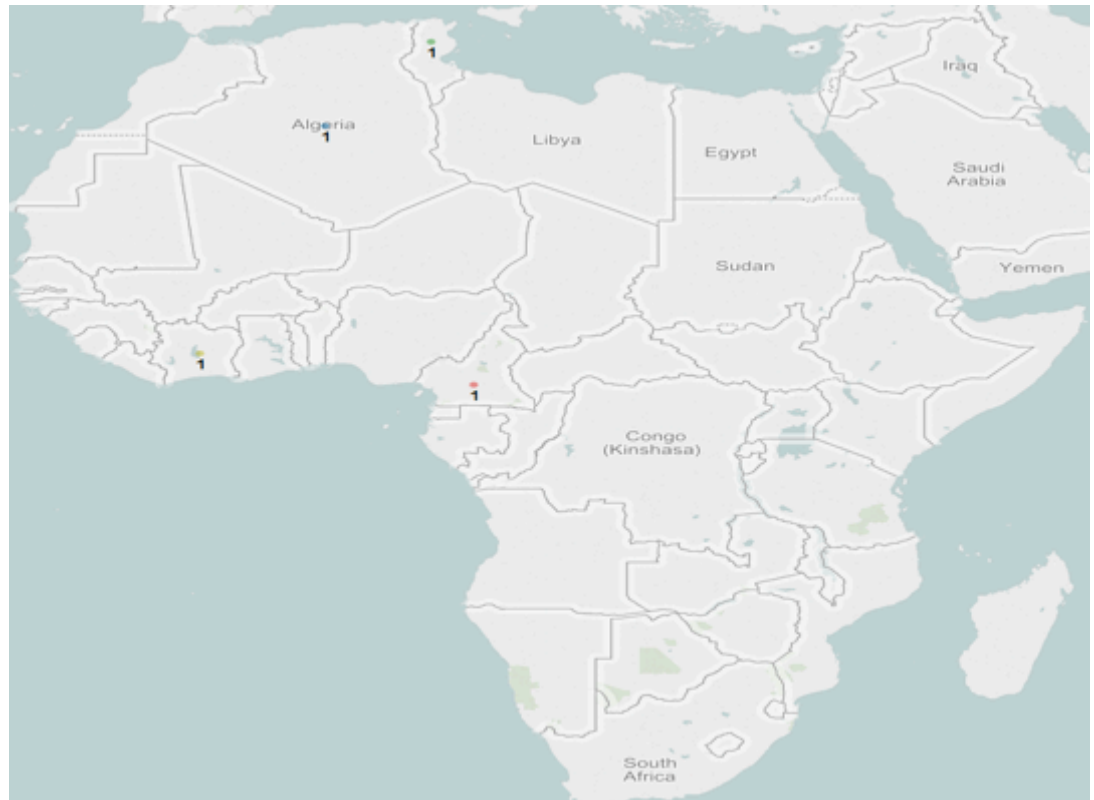
The frequencies distribution of 459 items related to  
structural paradigmatic approach  
filled in the repositories of the SoReCom “A.S. de Rosa” @-Library  
by the “Continent AUSTRALIA & OCEANIA according to the COUNTRY of the author’s  
institutional affiliation”

Country Name	Absolute Frequency	Frequency %
Australia	1	100,00%
Total	1	100,00%

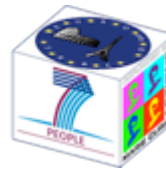


The frequencies distribution of 459 items related to  
structural paradigmatic approach  
filled in the repositories of the SoReCom “A.S. de Rosa” @-Library  
by the “Continent AFRICA” according to the COUNTRY of the author’s institutional affiliation”

Country Name	Absolute Frequency	Frequency %
Algeria	1	25,00%
Cameroon	1	25,00%
Ivory Coast	1	25,00%
Tunisia	1	25,00%
Total	4	100,00%



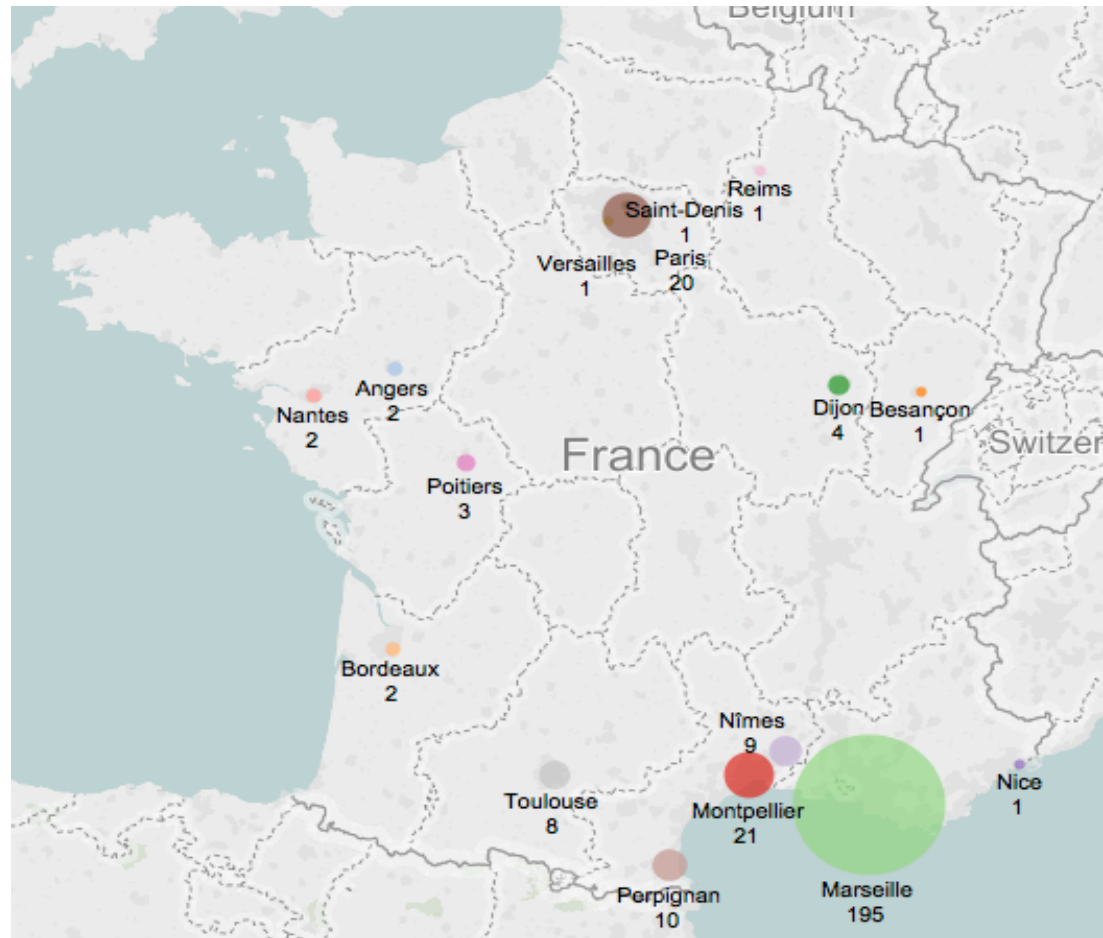




Funded by the European Union

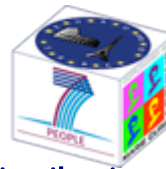
The frequencies distribution of 459 items related to  
structural paradigmatic approach  
filled in the repositories of the SoReCom “A.S. de Rosa” @-Library  
by the “First author’ Institution City and Country, France”

University	City	Country	Absolute Frequencies	Frequency %
Aix Marseille Université	Marseille	France	195	69,15%
Université Paul Valéry (Montpellier 3)	Montpellier	France	21	7,45%
Ecole des Hautes Etudes en Sciences Sociales	Paris	France	11	3,90%
Université de Perpignan Via Domitia	Perpignan	France	10	3,55%
Université de Nîmes	Nîmes	France	9	3,19%
Université de Toulouse II - Le Mirail	Toulouse	France	8	2,84%
Université Paris Descartes (Paris 5)	Paris	France	7	2,48%
Université de Bourgogne – University of Dijon	Dijon	France	4	1,42%
Université de Poitiers	Poitiers	France	3	1,06%
Université Bordeaux I	Bordeaux	France	2	0,71%
Université d'Angers	Angers	France	2	0,71%
Université de Nantes	Nantes	France	2	0,71%
Institut National de la Santé et de la Recherche Médicale	Paris	France	1	0,35%
Université de Franche-Comté	Besançon	France	1	0,35%
Université de Nice-Sophia Antipolis	Nice	France	1	0,35%
Université de Reims Champagne-Ardenne	Reims	France	1	0,35%
Université de Versailles Saint-Quentin-en-Yvelines	Versailles	France	1	0,35%
Université Paris 8	Saint-Denis	France	1	0,35%
Université Sorbonne Nouvelle (Paris 3)	Paris	France	1	0,35%
Total			281	100,00%



The frequencies distribution of 459 items related to  
structural paradigmatic approach  
filled in the repositories of the SoReCom “A.S. de Rosa” @-Library  
by the “First author” Institution City and Country , Brazil”

Institution	City	Country	Frequency	Frequency %
Universidade do Estado do Rio de Janeiro	Rio de Janeiro	Brazil	22	22,45%
Universidade Federal de Pernambuco	Recife	Brazil	14	14,29%
Universidade Federal de Santa Catarina	Florianópolis	Brazil	8	8,16%
Universidade Estácio de Sá	Rio de Janeiro	Brazil	6	6,12%
Universidade Católica de Goiás	Goiânia	Brazil	5	5,10%
Universidade Federal do Rio de Janeiro	Rio de Janeiro	Brazil	5	5,10%
Pontifícia Universidade Católica do Paraná	Curitiba	Brazil	4	4,08%
Universidade Estadual de Londrina	Londrina	Brazil	3	3,06%
Universidade Federal Fluminense	Niterói	Brazil	3	3,06%
Universidade Católica de Santos	Santos	Brazil	2	2,04%
Universidade de Brasília	Brasília	Brazil	2	2,04%
Universidade de São Paulo	São Paulo	Brazil	2	2,04%
Universidade de Uberaba	Uberaba	Brazil	2	2,04%
Universidade do Estado do Pará	Belém	Brazil	2	2,04%
Universidade Federal de Mato Grosso	Cuiabá	Brazil	2	2,04%
Universidade Federal do Rio Grande do Sul	Porto Alegre	Brazil	2	2,04%
Others	Others	Brazil	14	14,28 %
<b>Total</b>			<b>98</b>	<b>100,00%</b>



Funded by the European Union

The frequencies distribution of 459 items related to structural paradigmatic approach filled in the repositories of the SoReCom “A.S. de Rosa” @-Library by the “First author” Institution City and Country , Brazil”



# Conclusions

- Most of the authors that used structural approach published their papers in journals and conference presentations;
- The majority of the journals where are published these papers are not indexed journals;
- Almost half of the papers using structural approach were published between 1992-2001 ;
- French is the language of the most papers (approach developed by Aix-an-Provence School) and more than 70 % of the papers are written by authors from Europe (France 84,94 %), followed by the ones from Latin America (Brazil);
- From 459 items, 33 % of them are focused on empirical topics and most of them are written between 2011-2014 (Latin America);
- Collaborations:
  - Researchers tend to collaborate with their colleagues from their proximity: Europeans collaborate mainly between themselves, this being true also for the authors from Latin America;

# Further Steps

Our results – extracted from the “big data” filed in the specialized SoReCom “A.S.de Rosa” @-library - will be **further enriched in the more advanced phase of the meta-theoretical analysis**, when the systematic coding of the whole literature (specifically selected according to the thematic focus “[**specify your research focus**]”) will be completed in order to detect for each source:

- the specificity of the **paradigmatic approach** adopted by the author/s;
- the **construct/s specific of the social representation theory or other theories** addressed in the article/chapter;
- the reference to to **other disciplinary approach/es** (and the purpose of the authors aimed at integrating or differentiating);
- the **specific subtopics** addressed within the larger thematic area above mentioned;
- the **specific methodological plan** (research participants and their characteristics, techniques, data analysis strategies and software, etc. etc.)

## Further Steps

- *In the advanced phase of our collaborative research, **the data and meta-data produced by the meta-theoretical analysis will be further processed** using different statistical packages (as SPSS, SPAD-T, Tableau for geo-mapping, etc.) for different purposes.*
- *For example the dependent variables detected by **“the multiple sections of the grid related to the meta-theoretical analysis”** will be crossed with the variables extracted by the first part of the grid related to the **“bibliographic item”**.*
- *The results here presented , that are still at purely descriptive level - once the meta-theoretical analysis of the whole corpus will be completed - will be used for **more sophisticated cross-analyses of the results based on the bibliographic item and on the meta-theoretical analysis**, guided by specific hypotheses.*
- *Interested to identify the **role of the networking in the scientific dynamics of science dissemination**, we will also reconstructed trough the **analysis of co-authorship: “who is working with whom on what and from which country?”***

The frequencies distribution of 459 items related to  
structural paradigmatic approach  
filled in the repositories of the SoReCom “A.S. de Rosa” @-Library  
by the “INTTRA-CONTINENTAL & INTER-CONTINENTAL COLLABORATIONS”

## EUROPE

INTER-CONTINENTAL Collaborations among institutions in different continents with the first author belonging to an institution in EUROPE	Absolute Frequency	Frequency %
Collaborations among institutions in EUROPE and EUROPE	103	22.44%
Collaborations among institutions in EUROPE and LATIN AMERICA	2	0.44%
Collaborations among institutions in EUROPE and AFRICA	1	0.22%
Collaborations among institutions in EUROPE and NORTH-AMERICA	1	0.22%
Total	459	100,0%

## ASIA

INTER-CONTINENTAL Collaborations among institutions in different continents with the first author belonging to an institution in ASIA	Absolute Frequency	Frequency %
Collaborations among institutions in ASIA and ASIA	1	0.22%
Collaborations among institutions in ASIA and EUROPE	2	0.44%
Collaborations among institutions in ASIA and NORTH AMERICA	2	0.44%
Total	459	100,0%



The frequencies distribution of 459 items related to  
structural paradigmatic approach  
filled in the repositories of the SoReCom “A.S. de Rosa” @-Library  
by the “INTRA-CONTINENTAL & INTER-CONTINENTAL COLLABORATIONS”

### AFRICA

INTER-CONTINENTAL Collaborations among institutions in different continents with the first author belonging to an institution in AFRICA	Absolute Frequency	Frequency %
Collaborations among institutions in AFRICA and AFRICA	1	0.22%
Total	459	100,0%

### AUSTRALIA & OCEANIA

INTER-CONTINENTAL Collaborations among institutions in different continents with the first author belonging to an institution in AUSTRALIA & OCEANIA	Absolute Frequency	Frequency %
Collaborations among institutions in AUSTRALIA & OCEANIA and AUSTRALIA & OCEANIA	1	0.22 %
Total	459	100,0%

### LATIN-AMERICA

INTER-CONTINENTAL Collaborations among institutions in different continents with the first author belonging to an institution in LATIN- AMERICA	Absolute Frequency	Frequency %
Collaborations among institutions in LATIN-AMERICA and LATIN-AMERICA	55	11.98 %
Collaborations among institutions in LATIN-AMERICA and EUROPE	6	1.31%
Total	459	100,0%

The frequencies distribution of 459 items related to  
structural paradigmatic approach  
filled in the repositories of the SoReCom “A.S. de Rosa” @-Library  
by the “INTRA-INSTITUTIONAL & INTER-INSTITUTIONAL COLLABORATIONS”

International Collaborations among institutions in different countries	Absolute Frequency	Frequency %
Collaborations among institutions in France and France	74	0.16 %
Collaborations among institutions in France and Switzerland	6	0.01 %
Collaborations among institutions in France and Poland	1	0.22 %
Collaborations among institutions in France and Brazil	1	0.22 %
Collaborations among institutions in France and Tunisia	1	0.22 %
Collaborations among institutions in Brazil and Brazil	51	11.11 %
Collaborations among institutions in Brazil and Rio de Janeiro	1	0.22 %
Collaborations among institutions in Brazil and United Kingdom	1	0.22 %
Collaborations among institutions in Brazil and France	1	0.22 %
Collaborations among institutions in Argentina and Argentina	4	0.87 %
Collaborations among institutions in Argentina and Spain	1	0.22 %
Collaborations among institutions in Australia and Australia	1	0.22 %
Collaborations among institutions in Austria and Spain	2	0.44 %
Collaborations among institutions in Chile and Chile	1	0.22 %

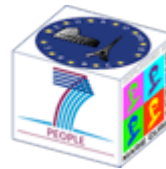


The frequencies distribution of 459 items related to  
structural paradigmatic approach  
filled in the repositories of the SoReCom “A.S. de Rosa” @-Library  
by the “INTRA-INSTITUTIONAL & INTER-INSTITUTIONAL COLLABORATIONS”



Funded by the European Union

International Collaborations among institutions in different countries	Absolute Frequency	Frequency %
Collaborations among institutions in China and China	1	0.22 %
Collaborations among institutions in Colombia and Colombia	2	0.44 %
Collaborations among institutions in Colombia and Brazil	1	0.22 %
Collaborations among institutions in Tunisia and Tunisia	1	0.22 %
Collaborations among institutions in United Kingdom and United Kingdom	1	0.22 %
Collaborations among institutions in Cyprus and Greece	2	0.44 %
Collaborations among institutions in Italy and Italy	7	1.53 %
Collaborations among institutions in Mexico and Mexico	3	0.65 %
Collaborations among institutions in Portugal and Portugal	2	0.44 %
Collaborations among institutions in Romania and Romania	1	0.22 %
Collaborations among institutions in South-Korea and United States of America	2	0.44 %
Collaborations among institutions in Spain and Spain	7	1.53 %
Collaborations among institutions in Spain and United States of America	1	0.22 %
Collaborations among institutions in Switzerland and Switzerland	1	0.22 %
Collaborations among institutions in Switzerland and France	1	0.22 %
<b>Total</b>	<b>459</b>	<b>100 %</b>



Funded by the European Union



Thank you for your attention!

