



Chi lavora con chi, su che cosa e dove?
Network analisi e Geo-Mapping delle collaborazioni inter-istituzionali
tra ricercatori in diversi paesi e continenti per una epidemiologia
della produzione scientifica sulle rappresentazioni sociali nel mondo

Prof. Annamaria de Rosa, Dr. Laura Dryjanska and Dr. Elena Bocci

based on the individual reports prepared by

SoReCom Joint – IDP Early Stage Researchers:

Carlos Filiberto Miguel Aguilar, Laura Arhiri, Filomena Berardi, Borja DeMadaria Escudero, Teresa Forte, Mihaela-Alexandra Gherman, Marija Adela Gjorgjioska, Ioana Guraliuc, Maryia Kukharava, Gabriela Monica Panzaru, Agnese Pastorino, Aminat Ramazanov, Ana Tomicic

Obiettivo guida

- Discutere alcuni aspetti della **disseminazione globale** della Teoria delle Rappresentazioni Sociali, presentando una selezione di risultati visualizzati attraverso la **tecnica del geo-mapping** disegnata ad hoc (de Rosa, 2014a) per continenti ed aree geo-culturali, per varie generazioni di ricercatori e per diversi approcci paradigmatici e foci tematici.
- Presentare alcune delle **analisi comparative basate su “big data” e “meta-data”** inseriti nei *SoReCom* “A.S. de Rosa”@-library repositories, relativamente alle affiliazioni istituzionali degli autori per Paesi e Continenti, anni di pubblicazione, lingua , indici bibliometrici, etc.



Obiettivo guida

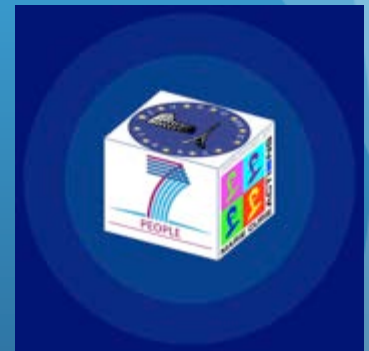
Illustrare:

- l'ampia produzione scientifica sulle Rappresentazioni Sociali (de Rosa, 2014a) ed i **risultati comparativi per tipologia di pubblicazione**;
- la **dinamica epidemiologica** della produzione scientifica sulle rappresentazioni sociali attraverso **network analisi e geo-mapping delle collaborazioni inter-istituzionali** tra autori in diversi paesi e continenti
- la **rilevanza delle scelte tematiche cross-cutting** e della lingua di pubblicazione per l'impatto bibliometrico



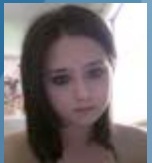
Research TASKS

- to detect and retrieve publications not yet inserted in the specialized SoReCom “**A.S. de Rosa**” @-Library, and meta-analyze the whole body of the literature on Social Representations produced according to the “specific focus on the individual research project” over the world and not only in the geo-cultural context/continent of the host institution for mobility stage;
- to fill the new information and upload the related PDF files into the specialized SoReCom “**A.S. de Rosa**” @-Library;
- to carry out statistical analyses on the complete meta-analyzed body (extracted from the SoReCom “**A.S. de Rosa**” @-Library inventories after the integration of the new information);
- to produce **video-interviews** - according to an outline designed by the project leader - with the key scientists who contribute to the development of the “specific focus on the individual research project” to Social Representations;
- to fully describe, visualize and comment the results obtained in intermediate reports and in the **PhD thesis** (in the double format of detailed report in English and a short article).



ESRs' Paradigmatic Individual Research Focus

Full Name	Nationality	Research Project
Guraliuc Ioana	Romania	Genesis and development of the “ structural paradigmatic approach ” in more than 50 years of social representation theory: mapping theory, methods, thematic areas and applications
Gjorgjioska Marija Adela	Macedonia	Genesis and development of the “ socio-dynamic paradigmatic approach ” in more than 50 years of social representation theory: mapping theory, methods, thematic areas and applications
Kukharava Maryia	Belorussia	Genesis and development of the “ dialogical, conversational and narrative paradigmatic approaches ” in more than 50 years of social representation theory: mapping theory, methods, thematic areas and applications
Arhiri Laura	Romania	Genesis and development of the “ anthropological and ethnographic paradigmatic approach ” in more than 50 years of social representation theory: mapping theory, methods, thematic areas and applications
Pastorino Agnese	Italy	Genesis and development of the “ modelling paradigmatic approach ” in more than 50 years of social representation theory: mapping theory, methods, thematic areas and applications



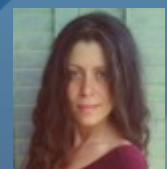
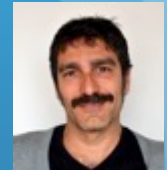
ESRs' Geo-Cultural Individual Research Focus

<i>Full Name</i>	<i>Nationality</i>	<i>Research Project</i>
<i>Tomicic Ana</i>	<i>Croatia</i>	<i>Mapping the impact and dissemination of the social representation theory across different geo-cultural contexts: “Europe”, the theory’s homeland</i>
<i>Gherman Mihaela Alexandra</i>	<i>Romania</i>	<i>Mapping the impact and dissemination of the social representation theory across different geo-cultural contexts: “North-America and other continents (Oceania, Asia, Africa)”, the new emerging scenarios</i>
<i>Teresa Forte</i>	<i>Portugal</i>	<i>Mapping the impact and dissemination of the social representation theory across different geo-cultural contexts: “Latin America”, the most fertilised scenario</i>



13 ESRs' Thematic Individual Research Focus

<i>Full Name</i>	<i>Nationality</i>	<i>Research Project</i>
Ramazanov Aminat	Russia	Taking stock of the literature in the thematic field of “ Science, Social Representations and Communication ”
De Madaria Borja	Spain	Taking stock of the literature in the thematic field of “ Social Representations and Environment ”
Panzaru Gabriela	Romania	Taking stock of the literature in the thematic field of “ Social Representations, Economy, Advertising, Marketing and Organizational Contexts ”
Miguel Aguilar C a r l o s Filiberto	Mexico	Taking stock of the literature in the thematic field of “ Social Representations, Community & Health ”
Berardi Filomena	Italy	Taking stock of the literature in the thematic field of “ Social Representations & Politics: Multidimensional identities, intergroup relations, social movements and active minorities ”



THE SO.RE.COM. “A.S. DE ROSA” @-LIBRARY

Prototypical use of the **SoReCom “A.S. de Rosa” @-library** as a **research tool**, rather than simply as an **online repository** for scientific documentation.



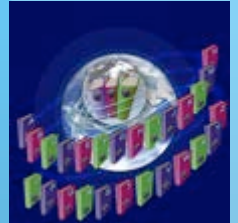
[http://www.europhd.net/cgi-bin/
WebObjects/europhd.woa/wa/biblio](http://www.europhd.net/cgi-bin/WebObjects/europhd.woa/wa/biblio)



[http://www.europhd.net/cgi-bin/
WebObjects/europhd.woa/wa/virtualLib](http://www.europhd.net/cgi-bin/WebObjects/europhd.woa/wa/virtualLib)

The SO.RE.COM. “A.S. de Rosa” @-LIBRARY

- A multiform digital environment of integrated relational data-bases conceived in the logic of the **semantic web**, including a series of web interfaces, aimed to integrate:
- A) **documentation services** (bibliographic repository, meta-theoretical analysis repository, intelligent @-Library)
- B) **networking** (interactive web-videoconference, on-line So.Re.Com. virtual community)
- C) **research training** (European/International Joint PhD “Virtual Campus”: video-courses in streaming, distant tutoring and co-tutoring, on-line trainee evaluation, etc. <http://www.europhd.eu>);
- It includes over **10,000 references**, and a vast and growing collection of bibliographic entries and a series of specific web-tools designed by **Annamaria Silvana de Rosa**, who is also the creator and the program director of the European/International Joint PhD in Social Representations and Communication and of the So.Re.Com. THEmatic NETwork).



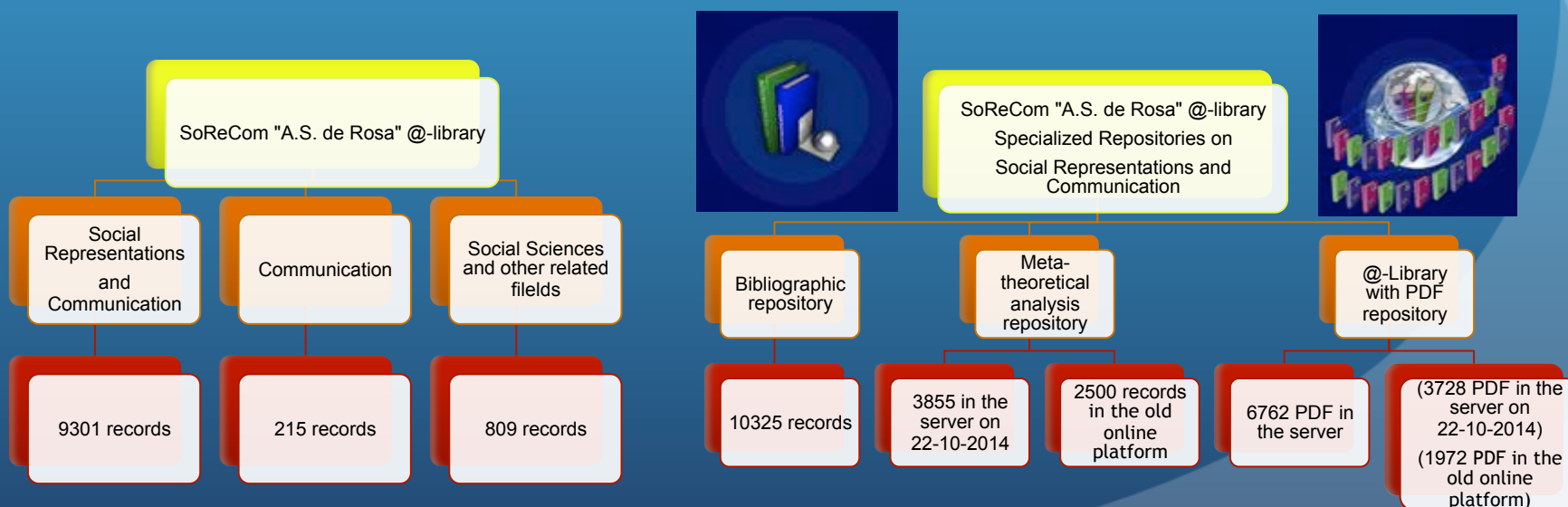
Research tools

The **grid for meta-theoretical analysis of literature on Social Representations** is organized in five main areas:

- **Theoretical reference to Social Representations constructs** monitors whether a publication refers to Social Representations Theory in a very generic way or addresses specific paradigmatic elements of the theory (i.e. the genesis, processes, functions, structure, transmission, and transformation of Social Representations) or whether the contribution refers to the theory itself as an object of critical analysis (meta-theory);
- **Theoretical reference to other constructs and theories** identifies whether the publication refers to other constructs, concepts and theories related to Social Representation as well as the focus of the reference: integration, differentiation, comparison, replacement;
- **Thematic analysis** categorizes the contents of empirical contributions by identifying the general thematic areas (i.e. health, environment, etc.) and the specific object of each study (i.e. AIDS, pollution, etc.), as well the specific typology (closed, open, polemic) of the Social Representations;
- **Methodological profile of each study** (its research design, its location, its nature, instruments for data collection, channels used as source of information, techniques for data analysis) and characteristics of the selected population (size of sample, variables considered, unit of analysis);
- **Paradigmatic coherence** between the theoretical assumptions and the methodological research design.

Source of the big-data and meta-data

- As of July 2015 the total of 10,325 records
- Total of 9301 publications present in the So.Re.Com "*A.S. de Rosa*" @-Library that refer to social representations and communication
- Based on the selected information concerning the bibliographic item
- Destined to grow as a result of our collaborative team work in the future



Selected RESULTS

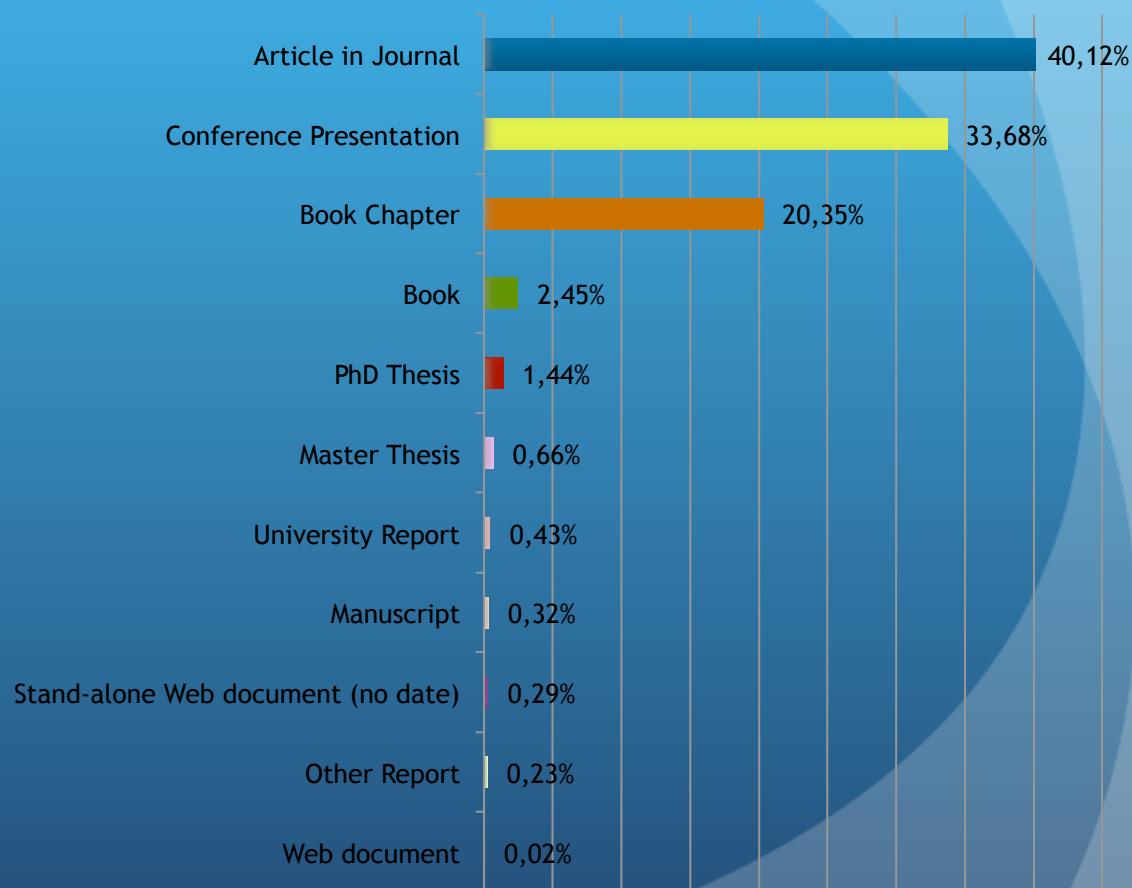
Based on a multi-year research program aimed at an **empirical meta-theoretical analysis** of the complete body of literature on Social Representations, a selection of results visualized according a technique designed ad hoc by Annamaria Silvana de Rosa **to map and to geo-map** the development and the dissemination of the theory across the continents, over several generations of scientists will be presented.

Joint Presentation Outline

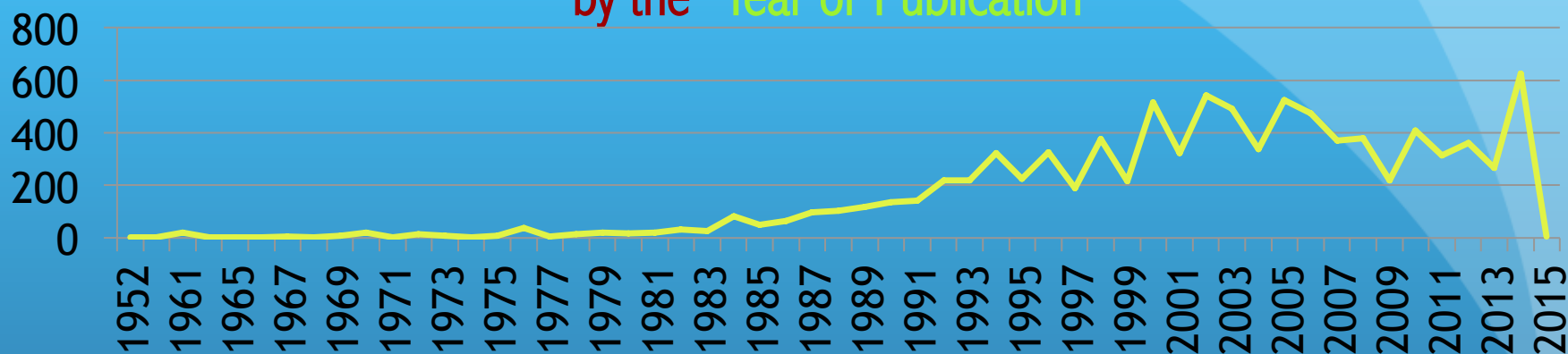
- Selected results based on **big-data** of the overall research program based using the variables of the first part of the grid:
 1. Resource Type
 2. Year of Publication
 3. Language
 4. Journal Title
 5. Journal Bibliometric Indexing
 6. Book Publisher
 7. Book Publisher's City
 8. Conference Type and Location
 9. Authors' Institution Country
 10. Keywords
- A final set of the results will be based on the **Inter-institutional collaborations within and between continents**

The frequencies distribution of 9149 items
specifically related to Social representations and Communication
filed in the repositories of the SoReCom “A.S. de Rosa” @-Library
by the “Resource Type”

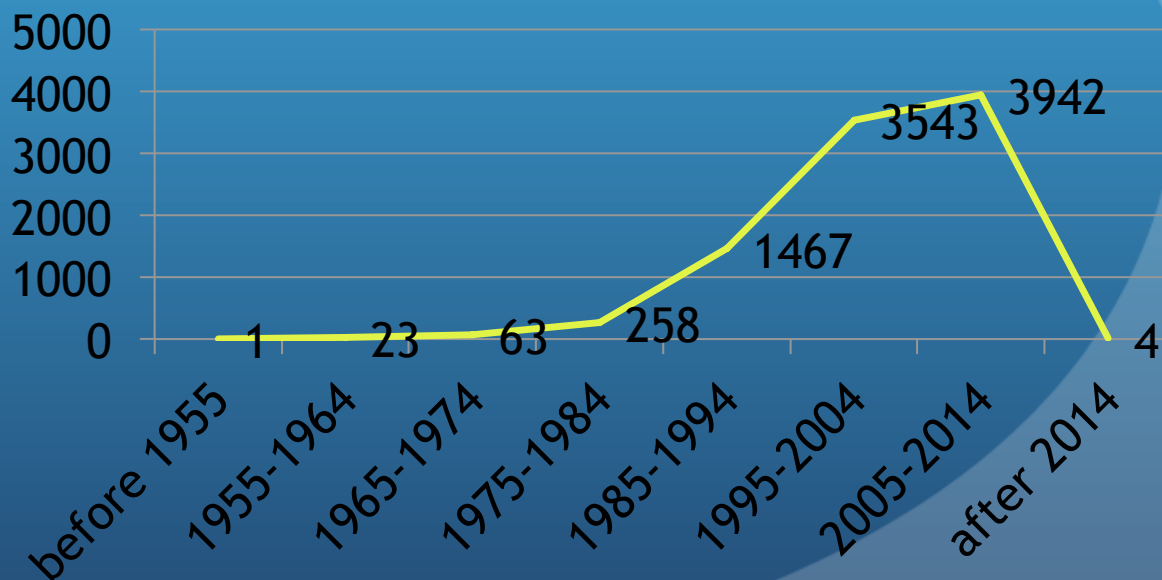
Resource Type	Absolute Frequency	Frequency %
Article in Journal	3663	40,04%
Conference presentation	3060	33,45%
Book Chapter	1889	20,65%
Book	225	2,46%
PhD Thesis	132	1,44%
Master Thesis	60	0,66%
University Report	40	0,44%
Stand-alone Web document (no date)	27	0,30%
Unpublished Manuscript	24	0,26%
Other Report	21	0,23%
Manuscript	6	0,07%
Web document	2	0,02%
Grand Total	9149	100,00%



The frequencies distribution of 9301 items
specifically related to social representations and communication
filed in the repositories of the SoReCom “A.S. de Rosa” @-Library
by the “Year of Publication”

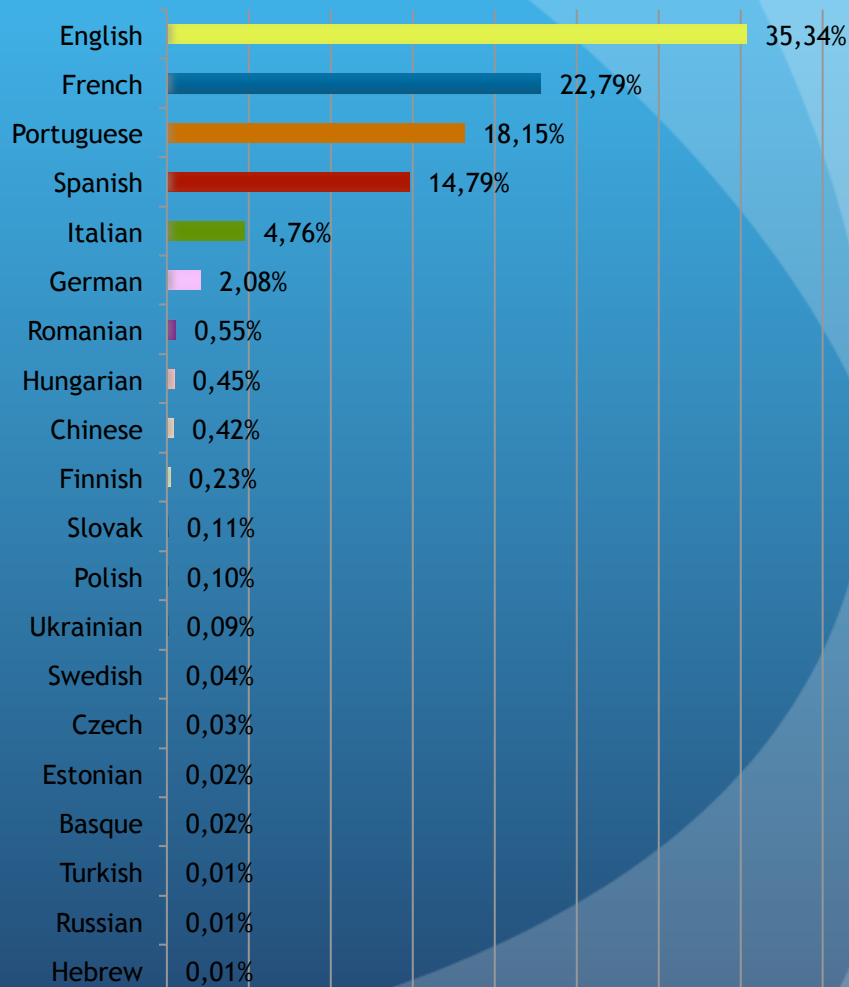


Publication Year (by decade)	Absolute Frequency	Frequency %
before 1955	1	0,01%
1955-1964	23	0,25%
1965-1974	63	0,68%
1975-1984	258	2,77%
1985-1994	1467	15,77%
1995-2004	3543	38,09%
2005-2014	3942	42,38%
after 2014	4	0,04%
Total	9301	100,00%



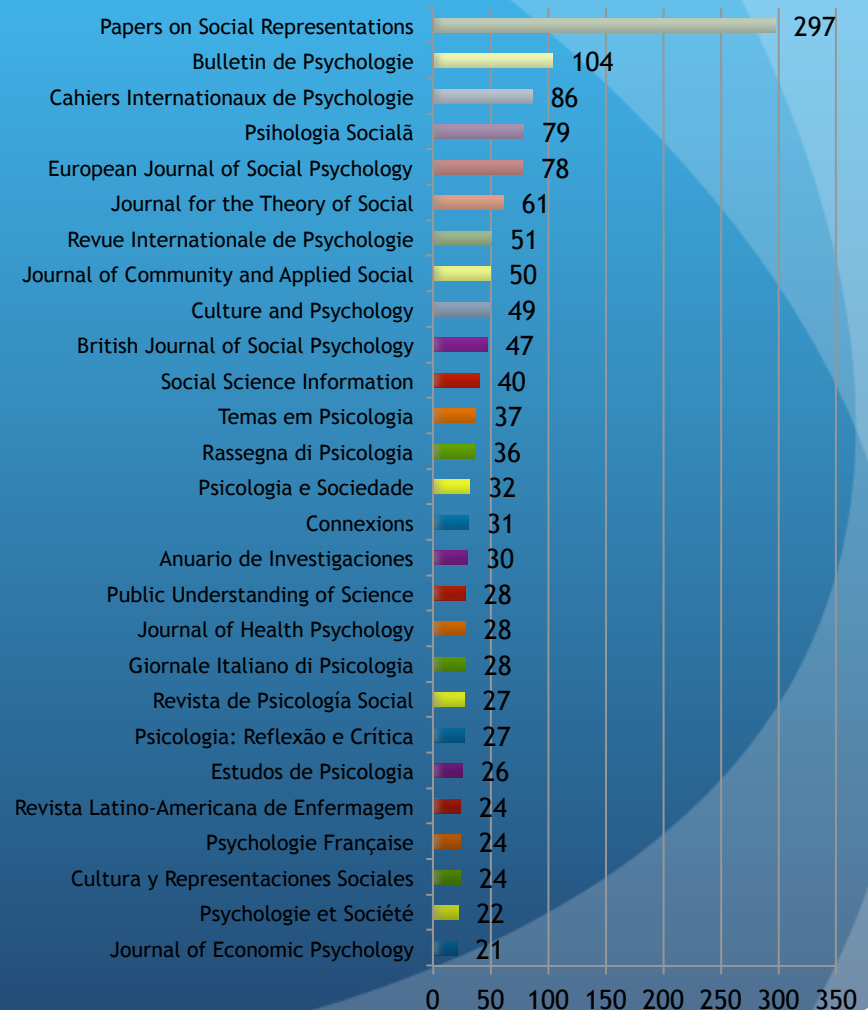
The frequencies distribution of 9301 items
specifically related to **Social representations and Communication**
filed in the repositories of the SoReCom “A.S. de Rosa” @-Library
by “**Language**”: S.R. a multi-language enterprise in 20 languages

Language	Absolute Frequency	Frequency %
English	3287	35,34%
French	2120	22,79%
Portuguese	1688	18,15%
Spanish	1376	14,79%
Italian	443	4,76%
German	193	2,08%
Romanian	51	0,55%
Hungarian	42	0,45%
Chinese	39	0,42%
Finnish	21	0,23%
Slovak	10	0,11%
Polish	9	0,10%
Ukrainian	8	0,09%
Swedish	4	0,04%
Czech	3	0,03%
Basque	2	0,02%
Estonian	2	0,02%
Hebrew	1	0,01%
Russian	1	0,01%
Turkish	1	0,01%
Total	9301	100,00%



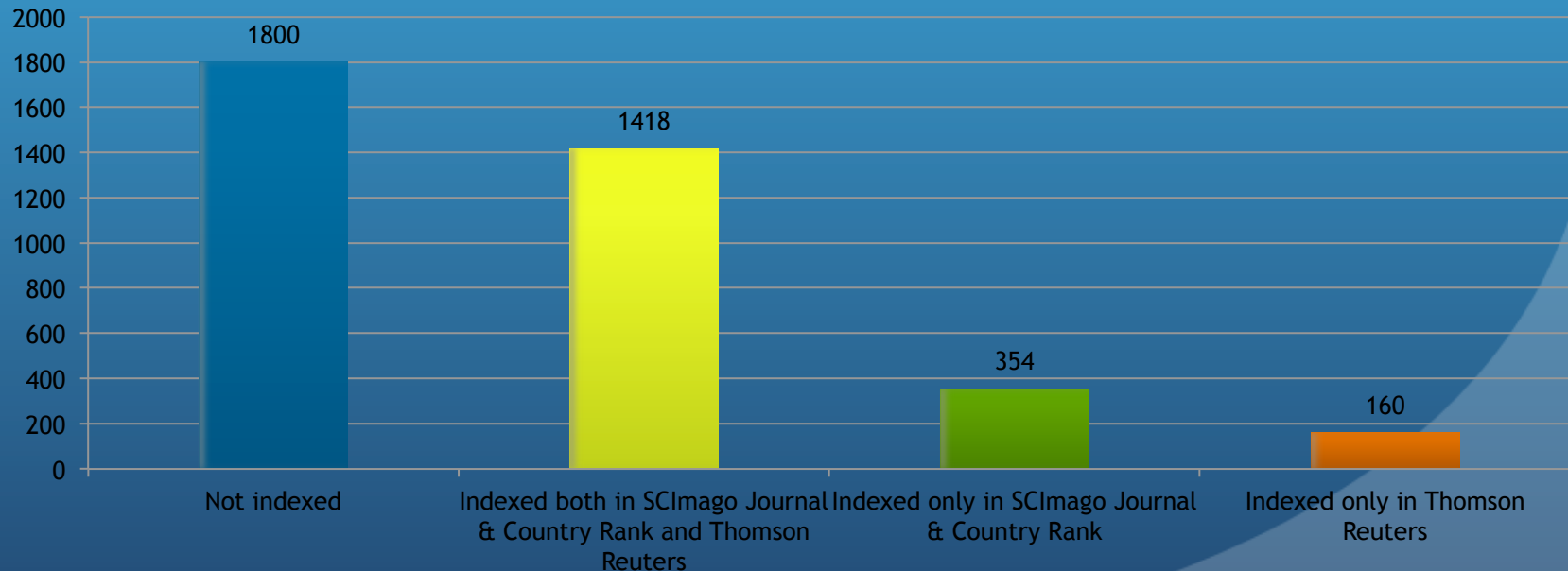
The frequencies distribution of 3732 journal articles related to Social representations and Communication field in the repositories of the SoReCom “A.S. de Rosa” @-Library by the top “Journal Title”

Journal Title	Absolute Frequency	Frequency %
Papers on Social Representations	297	7,96%
Bulletin de Psychologie	104	2,79%
Cahiers Internationaux de Psychologie Sociale	86	2,30%
Psihologia Socială	79	2,12%
European Journal of Social Psychology	78	2,09%
Journal for the Theory of Social Behaviour	61	1,63%
Revue Internationale de Psychologie Sociale	51	1,37%
Journal of Community and Applied Social Psychology	50	1,34%
Culture and Psychology	49	1,31%
British Journal of Social Psychology	47	1,26%
Social Science Information	40	1,07%
Temas em Psicologia	37	0,99%
Rassegna di Psicologia	36	0,96%
Psicologia e Sociedade	32	0,86%
Connexions	31	0,83%
Anuario de Investigaciones	30	0,80%
Giornale Italiano di Psicologia	28	0,75%
Journal of Health Psychology	28	0,75%
Public Understanding of Science	28	0,75%
Psicologia: Reflexão e Crítica	27	0,72%
Revista de Psicología Social	27	0,72%
Estudos de Psicologia	26	0,70%
Cultura y Representaciones Sociales	24	0,64%
Psychologie Française	24	0,64%
Revista Latino-Americana de Enfermagem	24	0,64%
Psychologie et Société	22	0,59%
Journal of Economic Psychology	21	0,56%
Other Journals (1219 different titles)	2345	62,83%
Total	3732	100,00%



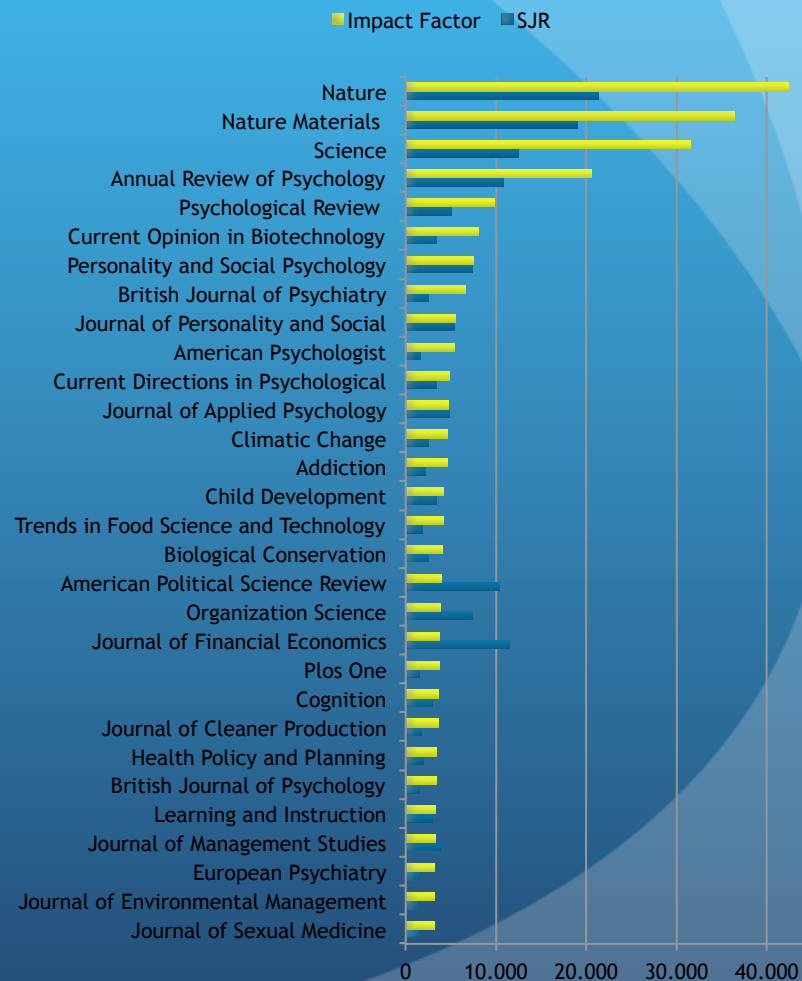
The frequencies distribution of 3732 journal articles
related to Social representations and Communication
field in the repositories of the SoReCom “A.S. de Rosa” @-Library
by the top “Journal Indexing”

Indexing	Absolute Frequency	Frequency %
Not indexed	1800	48,23%
Indexed both in SCImago Journal & Country Rank and Thomson Reuters	1418	38,00%
Indexed only in SCImago Journal & Country Rank	354	9,49%
Indexed only in Thomson Reuters	160	4,29%
Total	3732	100,00%



The frequencies distribution of 3732 journal articles related to Social representations and Communication filed in the repositories of the SoReCom “A.S. de Rosa” @-Library by the “Top Journals by Bibliometric Indexes” (Impact Factor > 3)

Journal Title	Impact Factor	SJR
Nature	42.351	21.323
Nature Materials	36.425	18.984
Science	31.477	12.465
Annual Review of Psychology	20.533	10.876
Psychological Review	9.797	5.034
Current Opinion in Biotechnology	8.035	3.382
Personality and Social Psychology Review	7.545	7.447
British Journal of Psychiatry	6.606	2.524
Journal of Personality and Social Psychology	5.510	5.443
American Psychologist	5.450	1.644
Current Directions in Psychological Science	4.824	3.393
Journal of Applied Psychology	4.758	4.827
Climatic Change	4.622	2.559
Addiction	4.577	2.172
Child Development	4.235	3.398
Trends in Food Science and Technology	4.135	1.824
Biological Conservation	4.036	2.552
American Political Science Review	3.933	10.361
Organization Science	3.807	7.376
Journal of Financial Economics	3.769	11.534
Plos One	3.730	1.512
Cognition	3.634	3.018
Journal of Cleaner Production	3.590	1.699
Health Policy and Planning	3.442	1.970
British Journal of Psychology	3.389	1.512
Learning and Instruction	3.337	2.975
Journal of Management Studies	3.277	3.806
European Psychiatry	3.210	1.472
Journal of Environmental Management	3.188	1.211
Journal of Sexual Medicine	3.150	1.403



The frequencies distribution of 2121 books
related to Social representations and Communication
filed in the repositories of the SoReCom “A.S. de Rosa” @-Library
by the “Book Publisher”

Publisher	Absolute Frequency	Frequency %
Presses Universitaires de France	171	8,06%
Cambridge University Press	102	4,81%
Presses Universitaires de Grenoble	75	3,54%
Routledge	56	2,64%
Hogrefe & Huber Publications	51	2,40%
Liguori	51	2,40%
Il Mulino	48	2,26%
Sage Publications	42	1,98%
Fundamentos	36	1,70%
Delachaux et Niestlé	34	1,60%
Érès	31	1,46%
DelVal	30	1,41%
Editora Universitária da UFPB	30	1,41%
Harvester Wheatsheaf	30	1,41%
Vozes	28	1,32%
Armand Colin	27	1,27%
Presses universitaires de Rennes	25	1,18%
Springer	22	1,04%
Consejo Mexicano de Investigación Educativa	21	0,99%
Éditions Nouvelles	21	0,99%
Other publishers (457 with less than 20)	1190	56,11%
Total	2121	100,00%



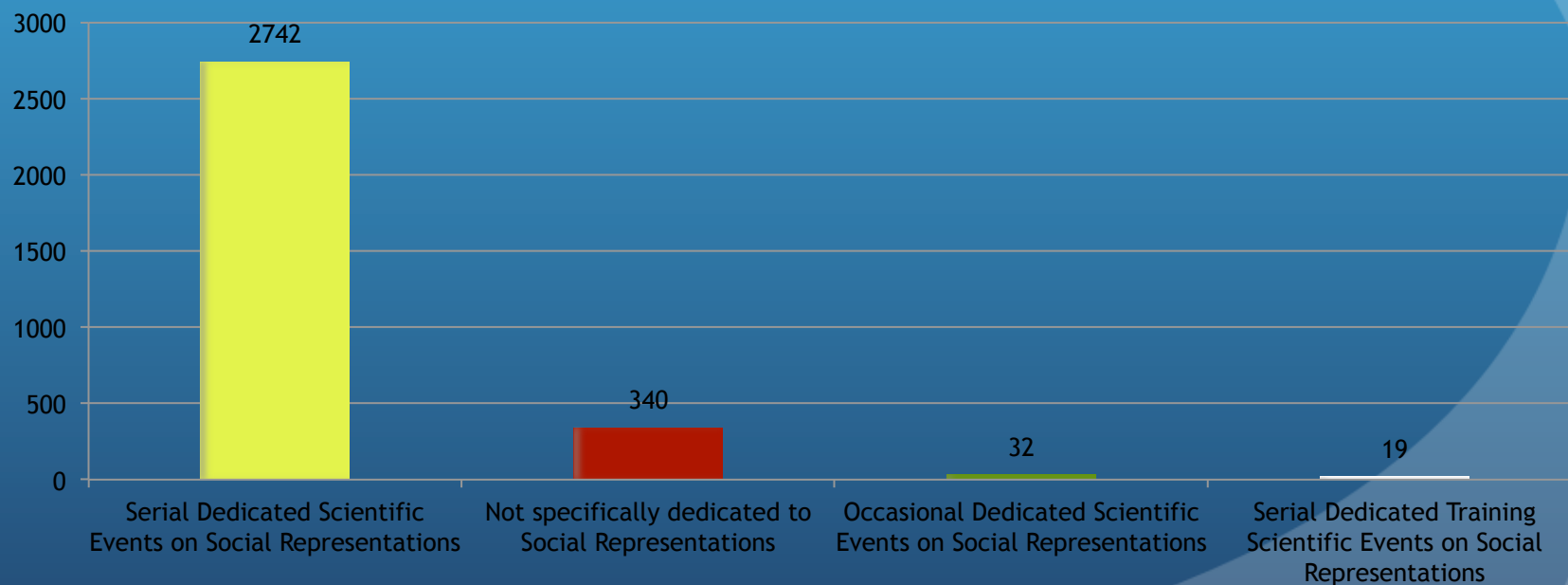
The frequencies distribution of 2118 books
related to **Social representations and Communication**
filed in the repositories of the SoReCom “A.S. de Rosa” @-Library
by the “**Book Publisher's City**”

City name	Absolute Frequency	Frequency %
Paris	414	19,55%
Cambridge	111	5,24%
London	105	4,96%
Madrid	78	3,68%
New York	77	3,64%
Grenoble	76	3,59%
Rome	70	3,31%
Bologna	57	2,69%
Milan	55	2,60%
Naples	55	2,60%
Mexico City	47	2,22%
Oxford	47	2,22%
Buenos Aires	34	1,61%
Montréal	34	1,61%
Barcelona	33	1,56%
Göttingen	32	1,51%
Fribourg	29	1,37%
Rennes	29	1,37%
Vitoria	28	1,32%
João Pessoa	27	1,27%
Petropolis	27	1,27%
Budapest	26	1,23%
Neuchatel	22	1,04%
Bern	21	0,99%
Vienna	20	0,94%
Other cities	564	26,63%
Total	2118	100,00%



The frequencies distribution of 3133 conference presentations
related to Social representations and Communication
filed in the repositories of the SoReCom “A.S. de Rosa” @-Library
by “Conference Type”

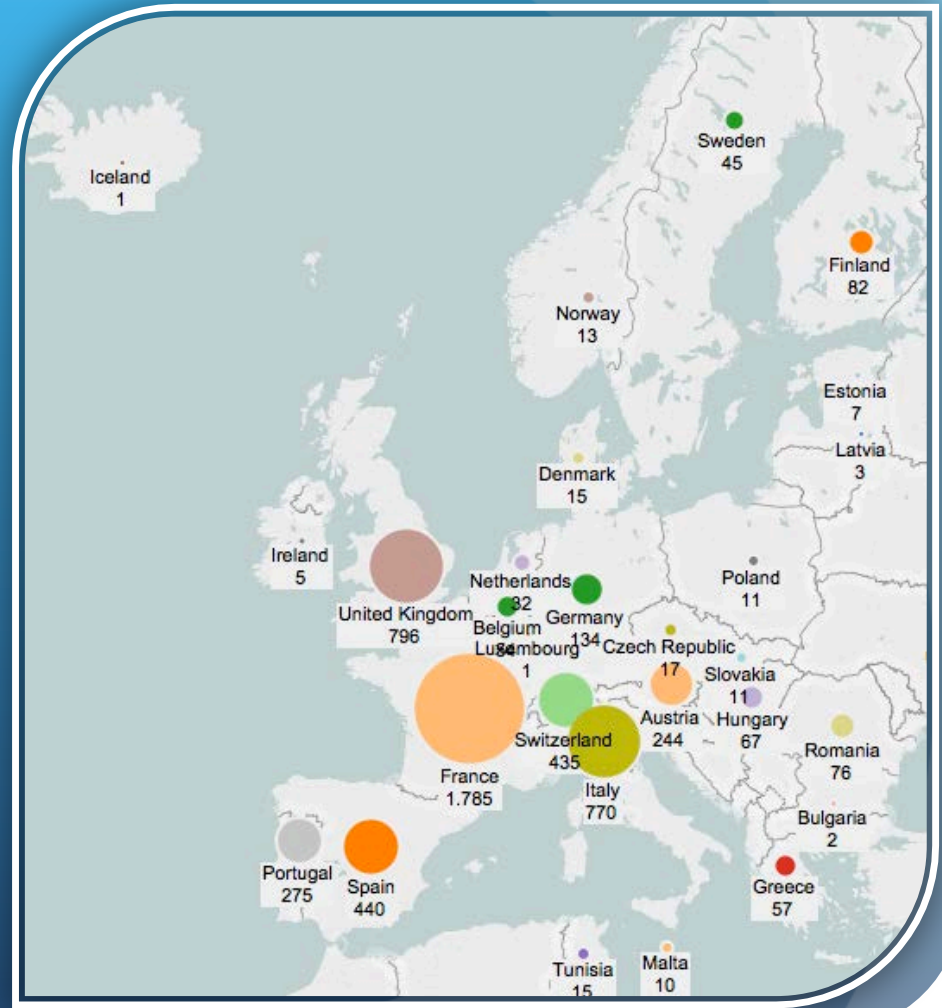
Conference type	Absolute Frequency	Frequency %
Serial Dedicated Scientific Events on Social Representations	2742	87,52%
Not specifically dedicated to Social Representations	340	10,85%
Occasional Dedicated Scientific Events on Social Representations	32	1,02%
Serial Dedicated Training Scientific Events on Social Representations	19	0,61%
Total	3133	100,00%



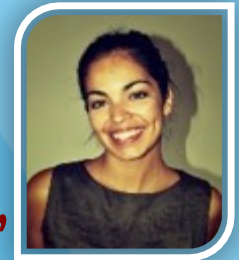
The frequencies distribution of 5410 items
related to Social Representations and Communication
filed in the repositories of the SoReCom “A.S. de Rosa” @-Library
produced in the “CONTINENT: EUROPE, THE THEORY’S HOMELAND”



Country name	Absolute Frequency	Frequency %
France	1785	32,99%
United Kingdom	796	14,71%
Italy	770	14,23%
Spain	440	8,13%
Switzerland	435	8,04%
Portugal	275	5,08%
Austria	244	4,51%
Germany	134	2,48%
Finland	82	1,52%
Romania	76	1,40%
Hungary	67	1,24%
Greece	57	1,05%
Belgium	54	1,00%
Sweden	45	0,83%
Netherlands	32	0,59%
Czech Republic	17	0,31%
Denmark	15	0,28%
Norway	13	0,24%
Cyprus	11	0,20%
Poland	11	0,20%
Slovakia	11	0,20%
Ukraine	11	0,20%
Malta	10	0,18%
Estonia	7	0,13%
Ireland	5	0,09%
Latvia	3	0,06%
Bulgaria	2	0,04%
Iceland	1	0,02%
Luxembourg	1	0,02%
Total	5410	100,00%



The frequencies distribution of 3025 items
related to Social Representations and Communication
filed in the repositories of the SoReCom “A.S. de Rosa” @-Library
produced in the “CONTINENT: LATIN AMERICA, THE MOST FERTILIZED SCENARIO”



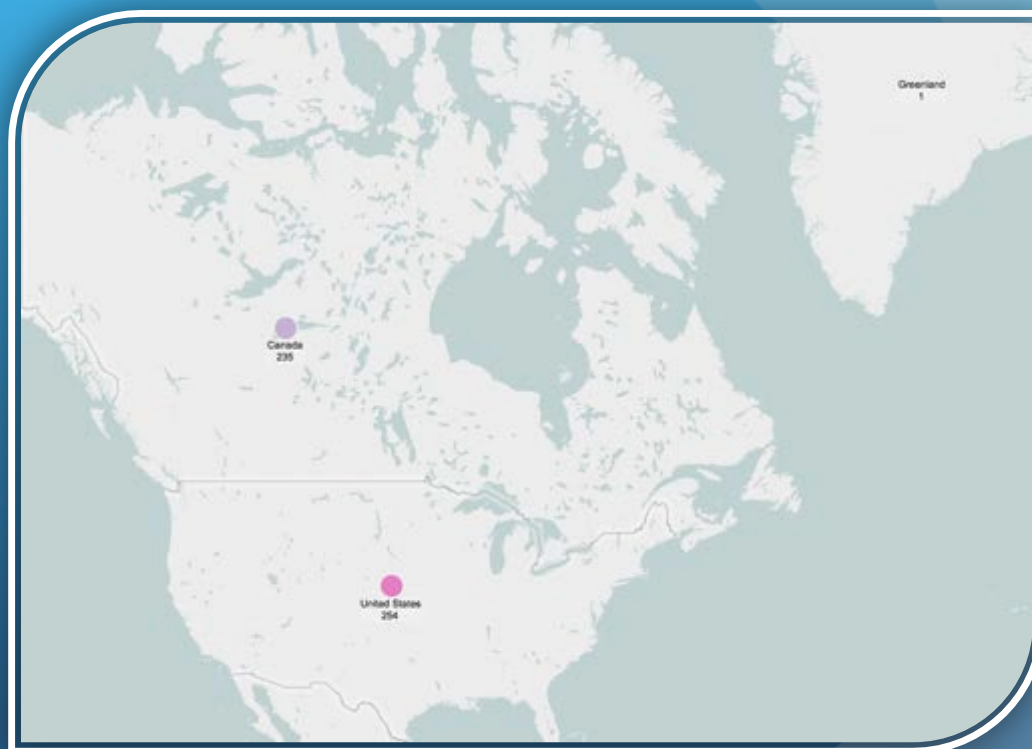
Country name	Absolute Frequency	Frequency %
Brazil	1885	62,31%
Argentina	406	13,42%
Mexico	406	13,42%
Venezuela	128	4,23%
Colombia	100	3,31%
Chile	60	1,98%
Cuba	13	0,43%
Peru	8	0,26%
Costa Rica	4	0,13%
Jamaica	4	0,13%
Uruguay	4	0,13%
Dominican Republic	2	0,07%
Puerto Rico	2	0,07%
Ecuador	1	0,03%
El Salvador	1	0,03%
Guatemala	1	0,03%
Total	3025	100,00%



The frequencies distribution of 490 items
related to Social Representations and Communication
filed in the repositories of the SoReCom “A.S. de Rosa” @-Library
produced in the “CONTINENT: NORTH AMERICA, AN EMERGING SCENARIO”



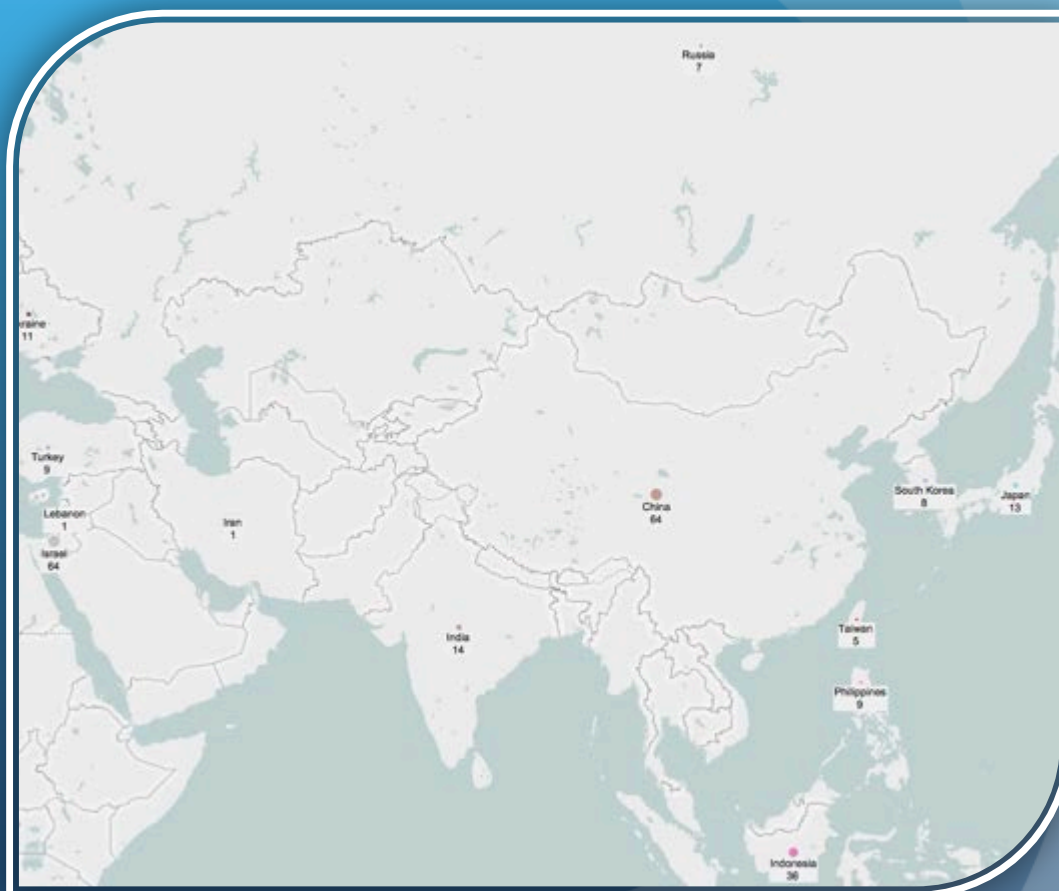
Country name	Absolute Frequency	Frequency %
United States	254	51,84%
Canada	235	47,96%
Greenland	1	0,20%
Total	490	100,00%



The frequencies distribution of 231 items
related to Social Representations and Communication
filed in the repositories of the SoReCom “A.S. de Rosa” @-Library
produced in the “CONTINENT: ASIA, AN EMERGING SCENARIO”



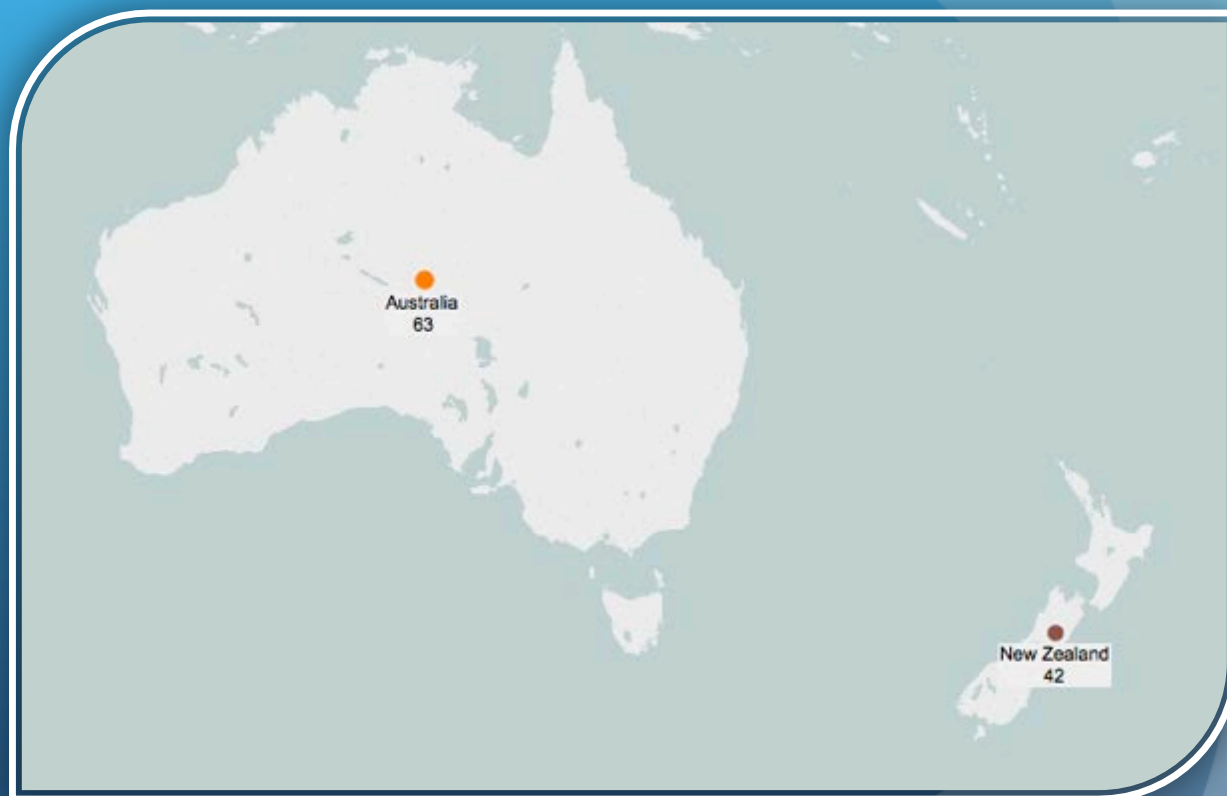
Country name	Absolute Frequency	Frequency %
China	64	27,71%
Israel	64	27,71%
Indonesia	36	15,58%
India	14	6,06%
Japan	13	5,63%
Philippines	9	3,90%
Turkey	9	3,90%
South Korea	8	3,46%
Russia	7	3,03%
Taiwan	5	2,16%
Iran	1	0,43%
Lebanon	1	0,43%
Total	231	100,00%



The frequencies distribution of 105 items
related to Social Representations and Communication
filed in the repositories of the SoReCom “A.S. de Rosa” @-Library
produced in the “CONTINENT: OCEANIA, AN EMERGING SCENARIO”



Country name	Absolute Frequency	Frequency %
Australia	63	60,00%
New Zealand	42	40,00%
Total	105	100,00%



The frequencies distribution of 40 items
related to Social Representations and Communication
filed in the repositories of the SoReCom “A.S. de Rosa” @-Library
produced in the “CONTINENT: AFRICA, AN EMERGING SCENARIO”



Country name	Absolute Frequency	Frequency %
Tunisia	15	37,50%
Ivory Coast	8	20,00%
South Africa	6	15,00%
Cameroon	2	5,00%
Ghana	2	5,00%
Algeria	1	2,50%
Botswana	1	2,50%
Marocco	1	2,50%
Mauritania	1	2,50%
Mauritius	1	2,50%
Mozambique	1	2,50%
Swaziland	1	2,50%
Total	40	100,00%

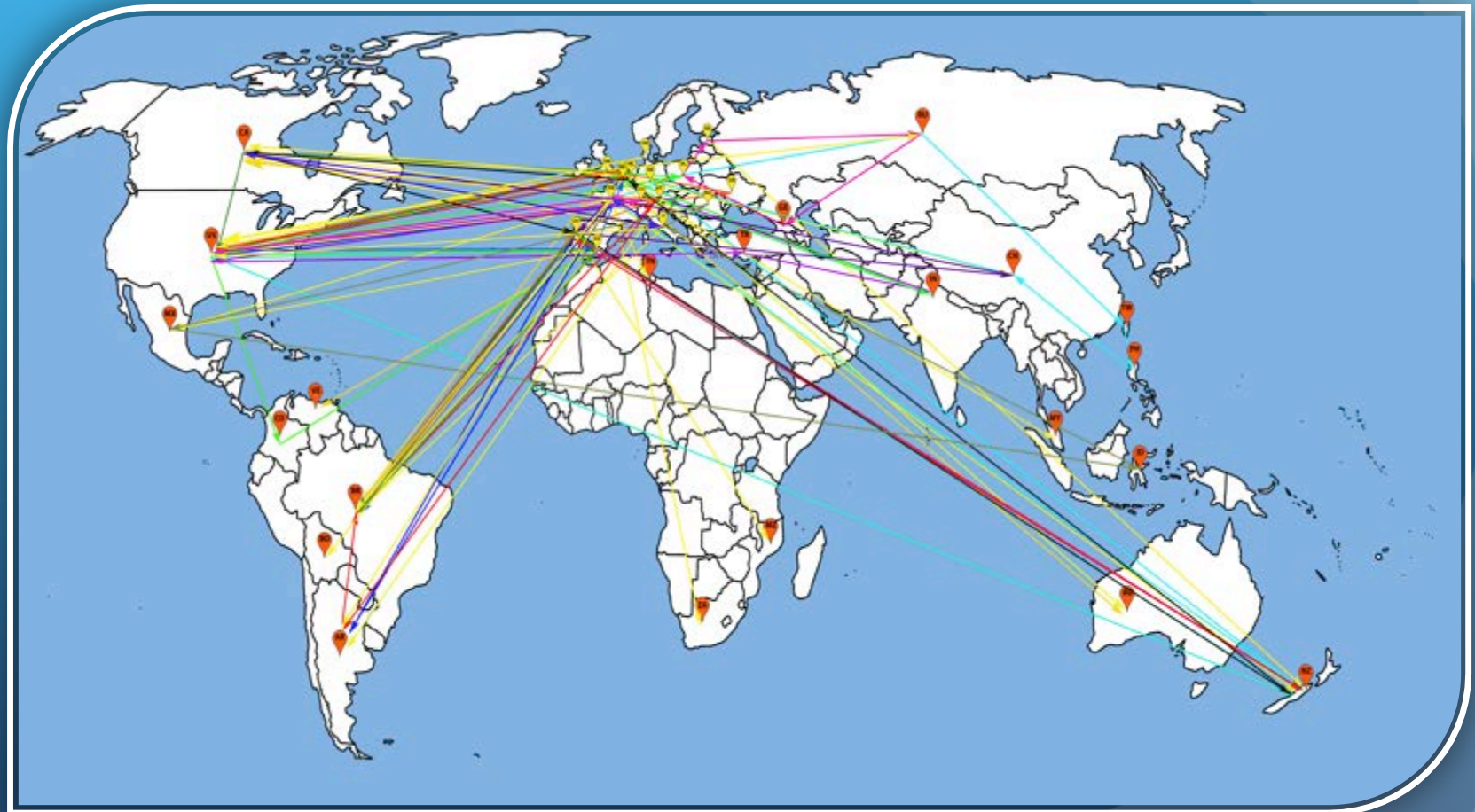


The frequencies distribution of 493 items
related to Social Representations and Communication
filed in the repositories of the SoReCom “A.S. de Rosa” @-Library
referring to the Inter-Institutional collaborations

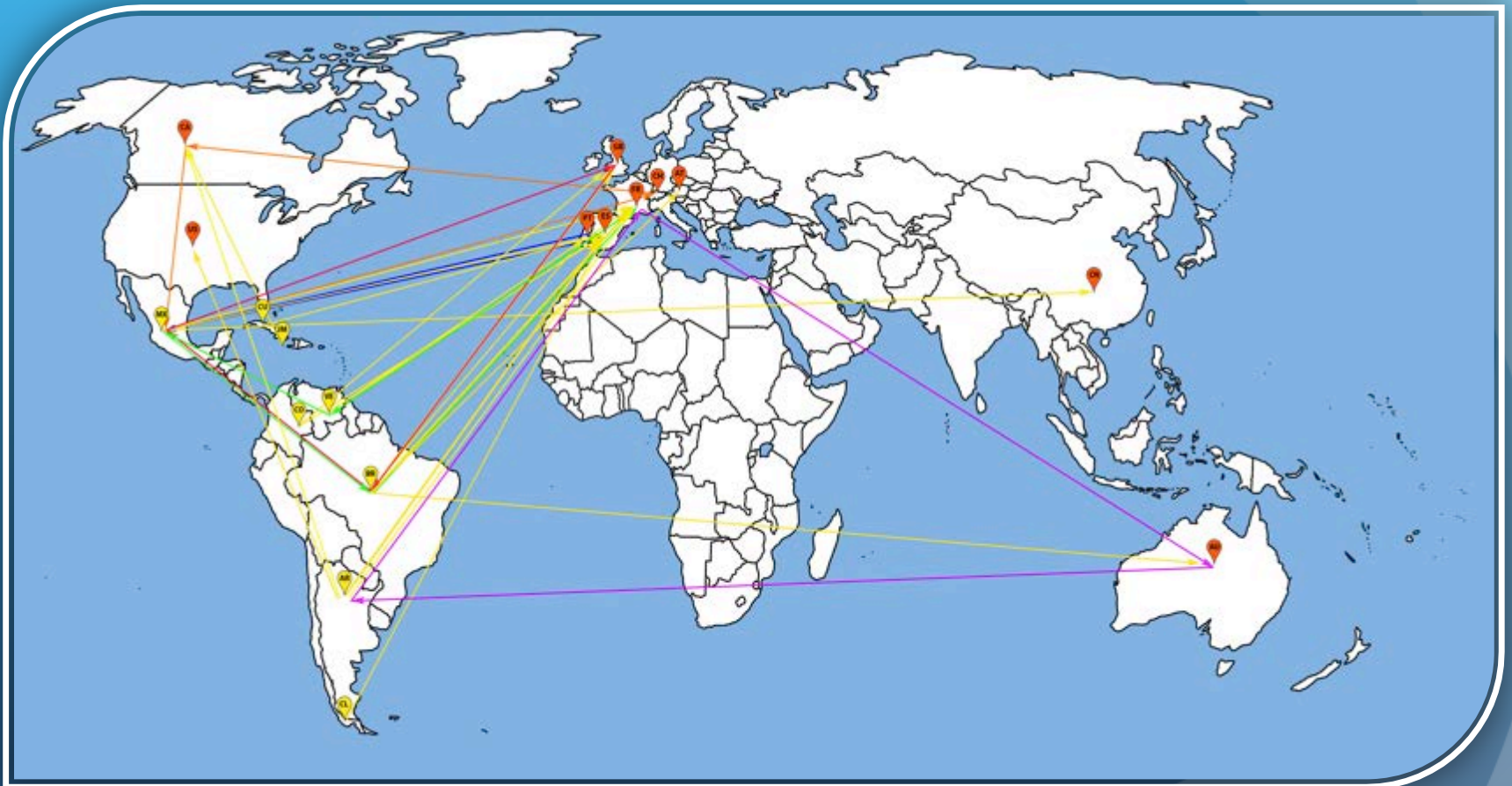


World-wide International collaborations in publications (F= 493) within (F= 289) and between (F = 204) continents	Absolute Frequencies	Frequencies %
Collaborations among institutions in different countries in EUROPE	276	95,60%
Collaborations among institutions in different countries in LATIN AMERICA	6	2,07%
Collaborations among institutions in different countries in ASIA	4	1,38%
Collaborations among institutions in different countries in NORTH AMERICA	2	0,69%
Collaborations among institutions in different countries in OCEANIA	1	0,35%
tot	289	
Intercontinental collaborations in publications with first author belonging to European institutions	86	42,15%
Intercontinental collaborations in publications with first author belonging to LATIN-AMERICAN institutions	48	23,52%
Intercontinental collaborations in publications with first author belonging to NORTH-AMERICAN institutions	35	17,15%
Intercontinental collaborations in publications with first author belonging to institutions in OCEANIA	18	8,82%
Intercontinental collaborations in publications with first author belonging to ASIAN institutions	14	6,86%
Intercontinental collaborations in publications with first author belonging to AFRICAN institutions	3	1,47%
Total	204	100,00%

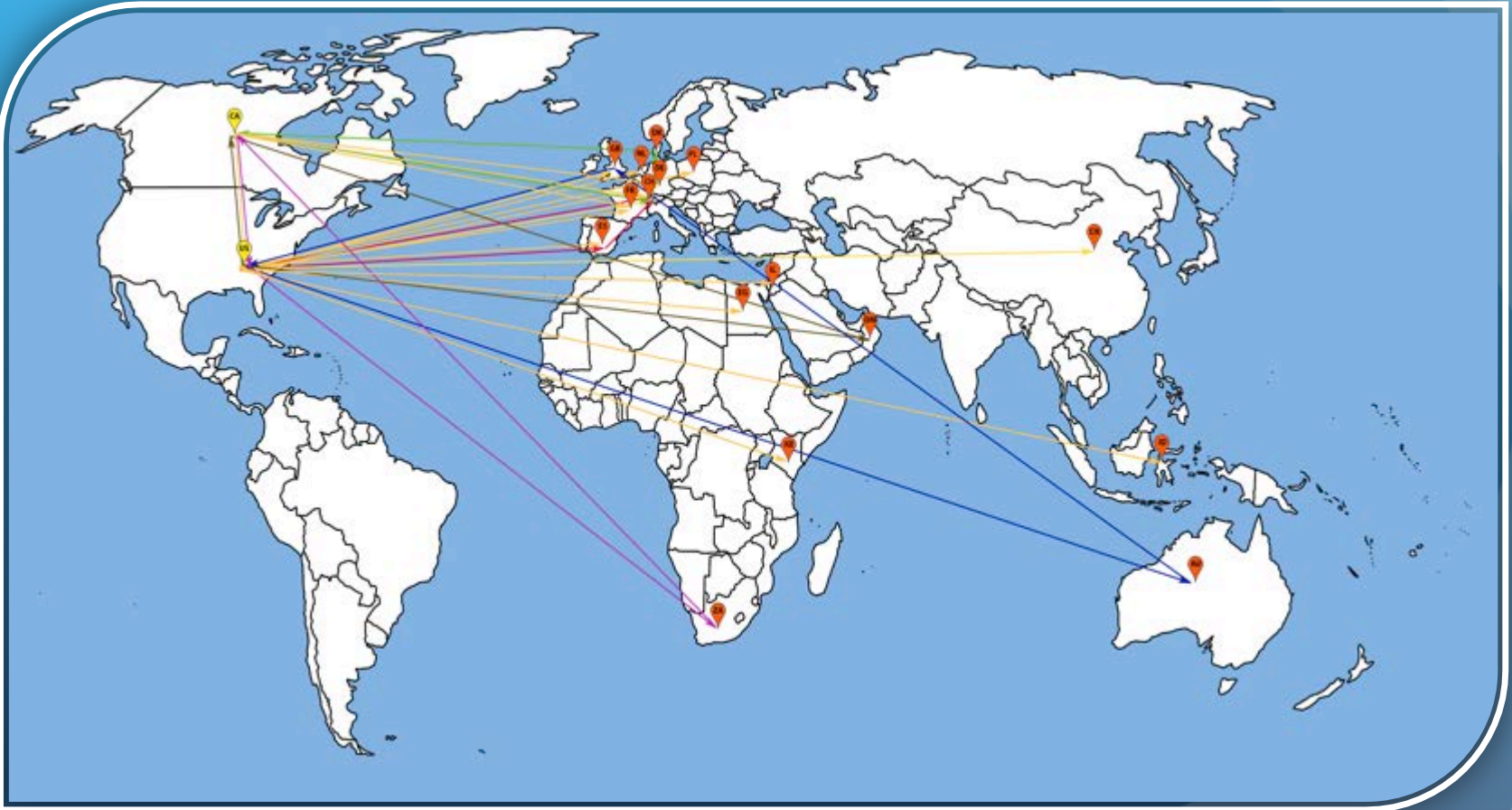
The frequencies distribution of 86 items
related to Social Representations and Communication
filed in the repositories of the SoReCom “A.S. de Rosa” @-Library
by the “INTER-INSTITUTIONAL COLLABORATIONS: EUROPE”



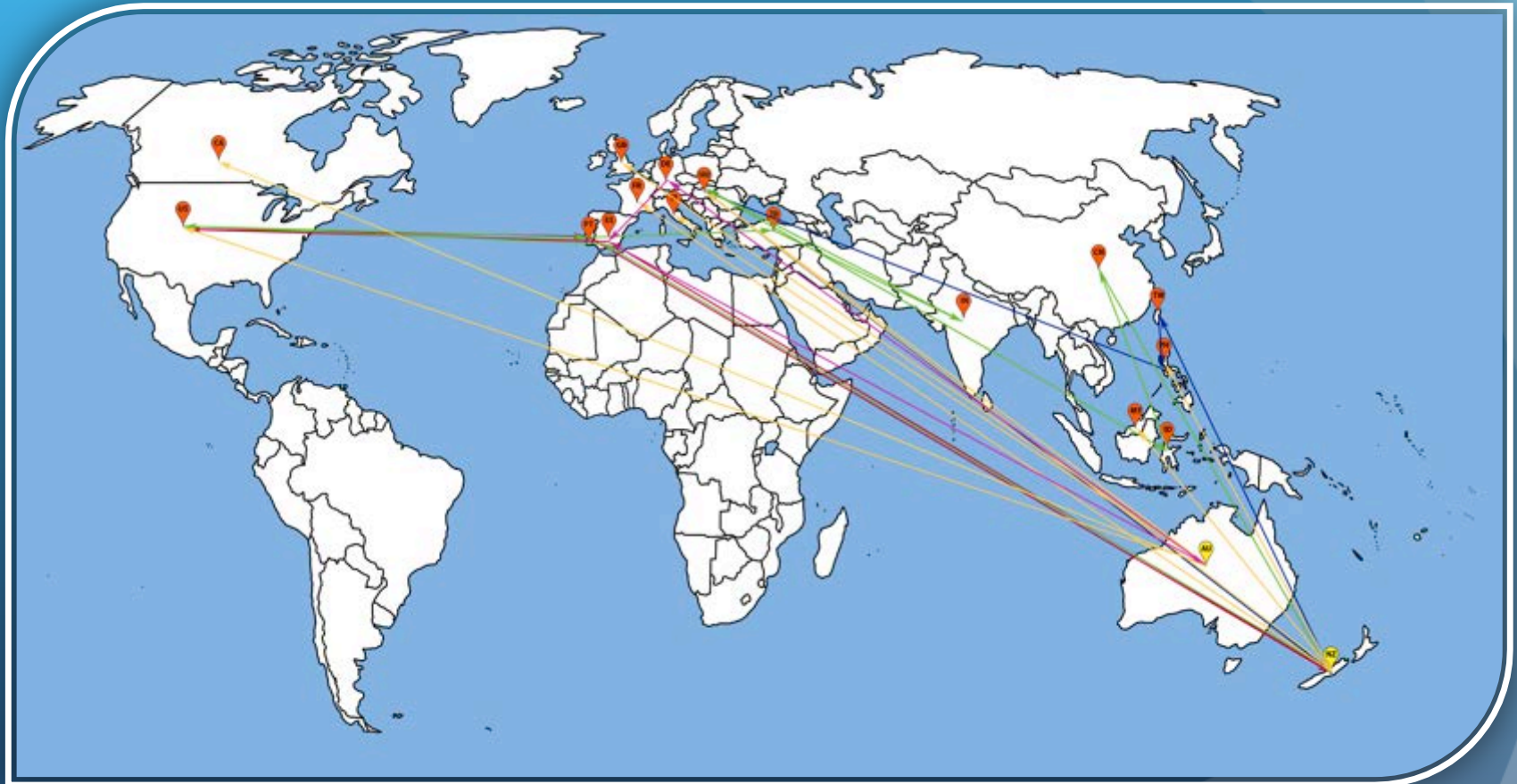
The frequencies distribution of 48 items
related to Social Representations and Communication
filed in the repositories of the SoReCom “A.S. de Rosa” @-Library
by the “INTER-INSTITUTIONAL COLLABORATIONS: LATIN AMERICA”



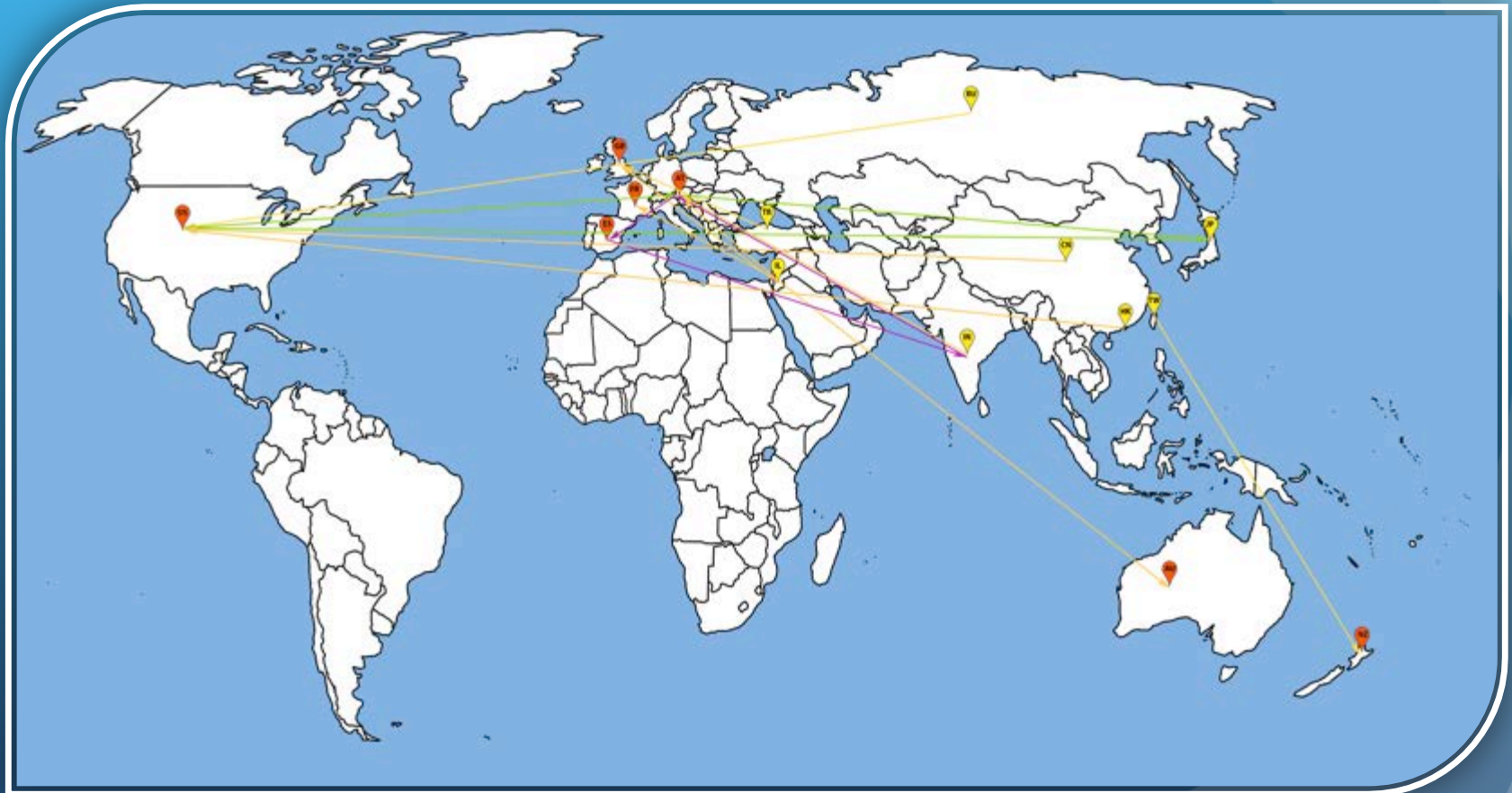
The frequencies distribution of 35 items
related to Social Representations and Communication
filed in the repositories of the SoReCom “A.S. de Rosa” @-Library
by the “INTER-INSTITUTIONAL COLLABORATIONS: NORTH AMERICA”



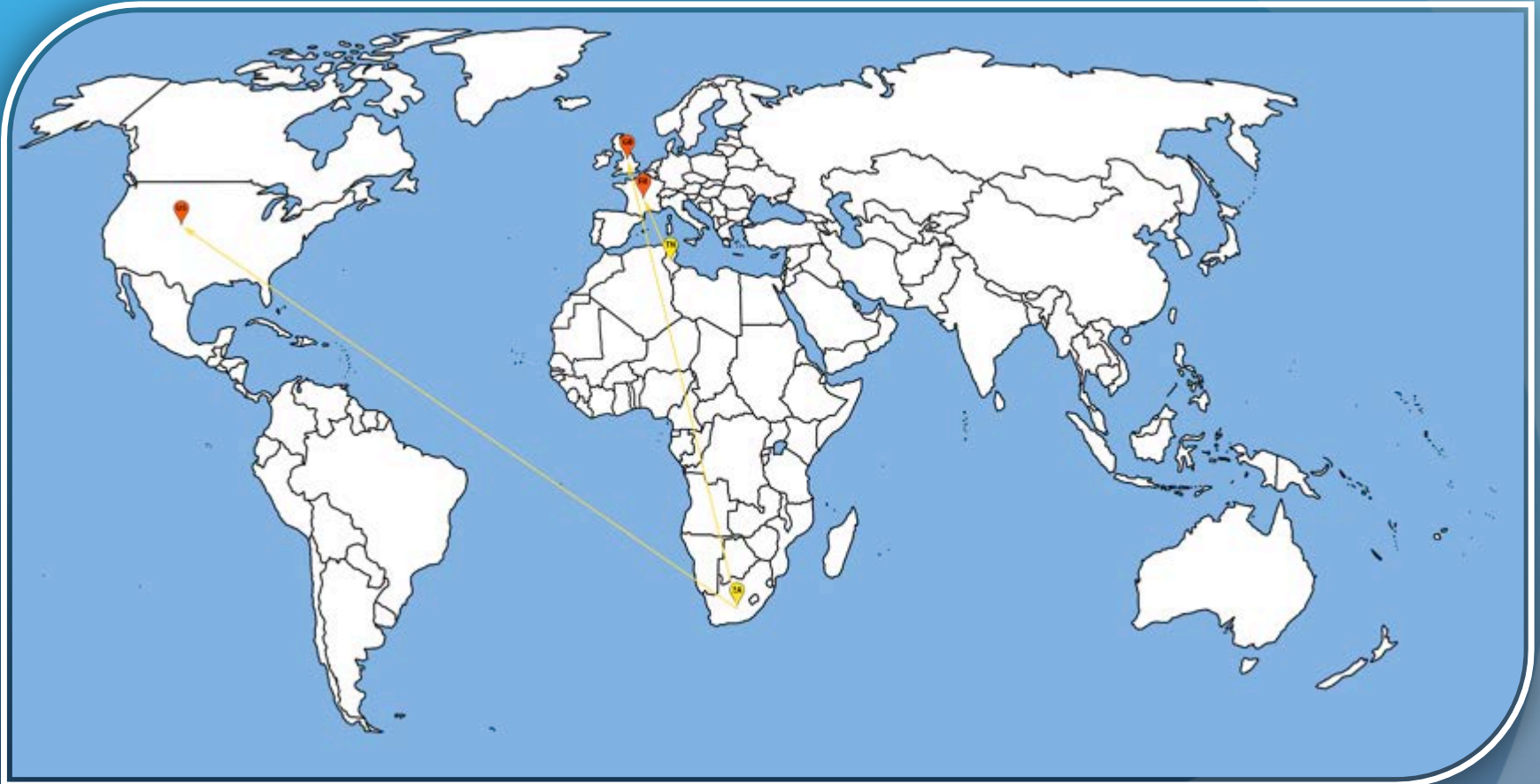
The frequencies distribution of 18 items
related to Social Representations and Communication
filed in the repositories of the SoReCom “A.S. de Rosa” @-Library
by the “INTER-INSTITUTIONAL COLLABORATIONS: OCEANIA”



The frequencies distribution of 14 items
related to Social Representations and Communication
filed in the repositories of the SoReCom “A.S. de Rosa” @-Library
by the “INTER-INSTITUTIONAL COLLABORATIONS: ASIA”



The frequencies distribution of 3 items
related to Social Representations and Communication
filed in the repositories of the SoReCom “A.S. de Rosa” @-Library
by the “INTER-INSTITUTIONAL COLLABORATIONS: AFRICA”



Conclusions

L'analisi dei *big data e metadata* delle fonti inserite nella *SoReCom "A.S. de Rosa" @-Library* ci consente di tracciare un bilancio del campo scientifico sviluppato in oltre 50 anni, mappando il suo sviluppo, i suoi vari approcci paradigmatici e metodologici, le aree tematiche in vari campi applicativi e l'impatto secondo criteri bibliometrici della produzione scientifica di una comunità multi-generazionale di ricercatori e attraverso differenti contesti geo-culturali (de Rosa, A.S. 2015b).

Conclusions

I dati empirici presentati confermano la **ricchezza e la diversificazione delle fonti editoriali**, veicolo di disseminazione globale della letteratura sulle rappresentazioni sociali e la intensità delle collaborazioni intra ed inter-continentali che **caratterizzano la produzione scientifica**, considerando le diverse tipologie di pubblicazioni che spaziano attraverso numerose aree tematiche e una lista estremamente articolata di **sub-topics**.

Conclusions

Essi evidenziano una crescita progressiva dopo un periodo di latenza di circa due decenni anche in merito all'impatto secondo i criteri bibliometrici, tuttavia ancora fortemente condizionato dalla lingua di pubblicazione, dalle aree geo-culturali di riferimento e in qualche misura anche dalle scelte tematiche.

Conclusions

Le cinque macro-aree tematiche in ordine di rango per numerosità di contributi sono risultate:

1. *“Science, Education and Communication”,*
2. *“Community & Health”,*
3. *“Politics: Multidimensional identities, intergroup relations, social movements and active minorities”,*
4. *“Environment”,*
5. *“Economy, Advertising, Marketing and Organizational Contexts”,*

ciascuna delle quali a sua volta diversificata in molti sub-topics

Thank you

