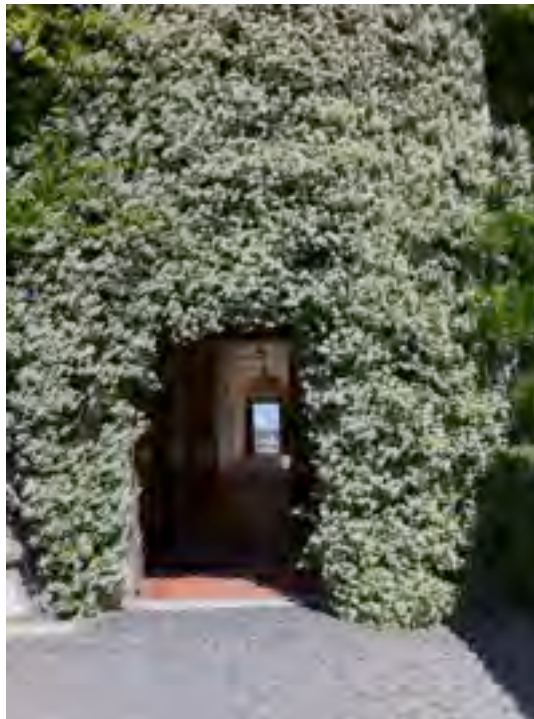


Funded by the European Union

## **EUROPEAN/INTERNATIONAL JOINT PHD IN SOCIAL REPRESENTATIONS AND COMMUNICATION**

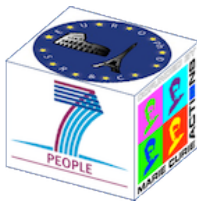


### **MULTIMEDIA LABORATORY AND RESEARCH CENTRE**



## **PRACTICAL INFORMATION**





Funded by the European Union

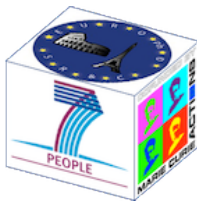
The European/International Joint PhD in S.R. & C. Multimedia Lab and Research Centre is located on the Aventine Hill in the very heart of Rome:

**Piazza Cavalieri di Malta 2**

**00153 Rome**

**Tel: +39 06 69380814 / 06 69294280**





Funded by the European Union

### ARRIVAL FROM FIUMICINO AIRPORT

**By taxi:** We strongly advise that you use licensed taxis with meters. The fares of the licensed public taxis from Fiumicino to European/International Joint lab should be about 48 Euro, inclusive of luggage, for a maximum of four passengers. The cost of the service is the same for the opposite direction also, going from Rome to Fiumicino.

**By rail:** There is a railway station in the airport and you have the two following options:

- Take the FM1 train (Fiumicino - Fara Sabina line; the ticket costs **8 €**) at the airport's train station and get down at **Ostiense Station**. From there the European/International Joint lab is about 10 minute walk.
- Take the Leonardo Express train (the ticket costs **14 €**), which is a non-stop train until **Termini Central Station**. From there take Metro B (direction **Laurentina**) until the **Circo Massimo Station**. From there the European/International Joint lab is about 10 minute walk.

### ARRIVAL FROM CIAMPINO AIRPORT

**By taxi:** We strongly advise that you use licensed taxis with meters. The fares of the licensed public taxis from Ciampino to your hotel should be about 30 Euro, inclusive of luggage, for a maximum of four passengers. The cost of the service is the same for the opposite direction also, going from Rome to Ciampino.

**By bus:** Several companies (public and private) provide a shuttle service from Ciampino airport to the **Termini Central Station**. The price is usually around 5 €. From **Termini Central Station** take Metro B (direction **Laurentina**) until the **Circo Massimo Station**. From there the European/International Joint lab is about 10 minute walk.

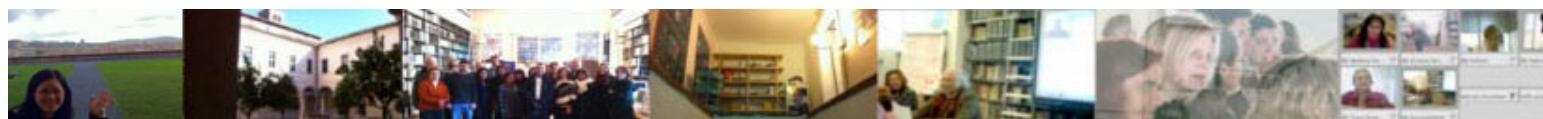
**By rail:** You need to take a bus from Ciampino Airport to Ciampino train station. Trains from Ciampino station to Termini Central station run every 15 minutes. Bus tickets can be bought onboard and train tickets at the station. From **Termini Central Station** take Metro B (direction **Laurentina**) until the **Circo Massimo Station**. From there the European/International Joint lab is about 10 minute walk.

### PUBLIC TRANSPORT IN ROME

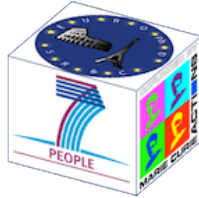
#### **Buying a ticket – “Metrebus”**

With the integrated ticket “Metrebus” you are free to use all public transports within the metropolitan area of Rome, except for the direct train Termini- Fiumicino Airport. Tickets must be bought at authorized vendors (newsagents, tobacco shops) and automatic ticket machines before boarding. The following tickets are available:

- The Integrated time ticket (B.I.T.) costs 1,50 Euro and it is valid for 100 minutes after stamping.
- The Integrated daily ticket (B.I.G.) costs 6,00 Euro and it is valid for 24h after stamping for travel in the Rome area.
- The Integrated tourist card (B.T.I.) costs 16,50 Euro and it is valid for 3 days from the date indicated by the customer on the card for travel in the Rome area.







Funded by the European Union

- The Integrated Weekly card (C.I.S.) costs 24,00 Euro and it is valid for 7 days from the date indicated by the customer on the card for travels in the Rome area.

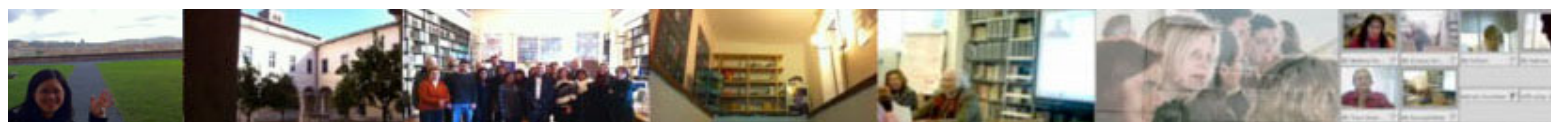
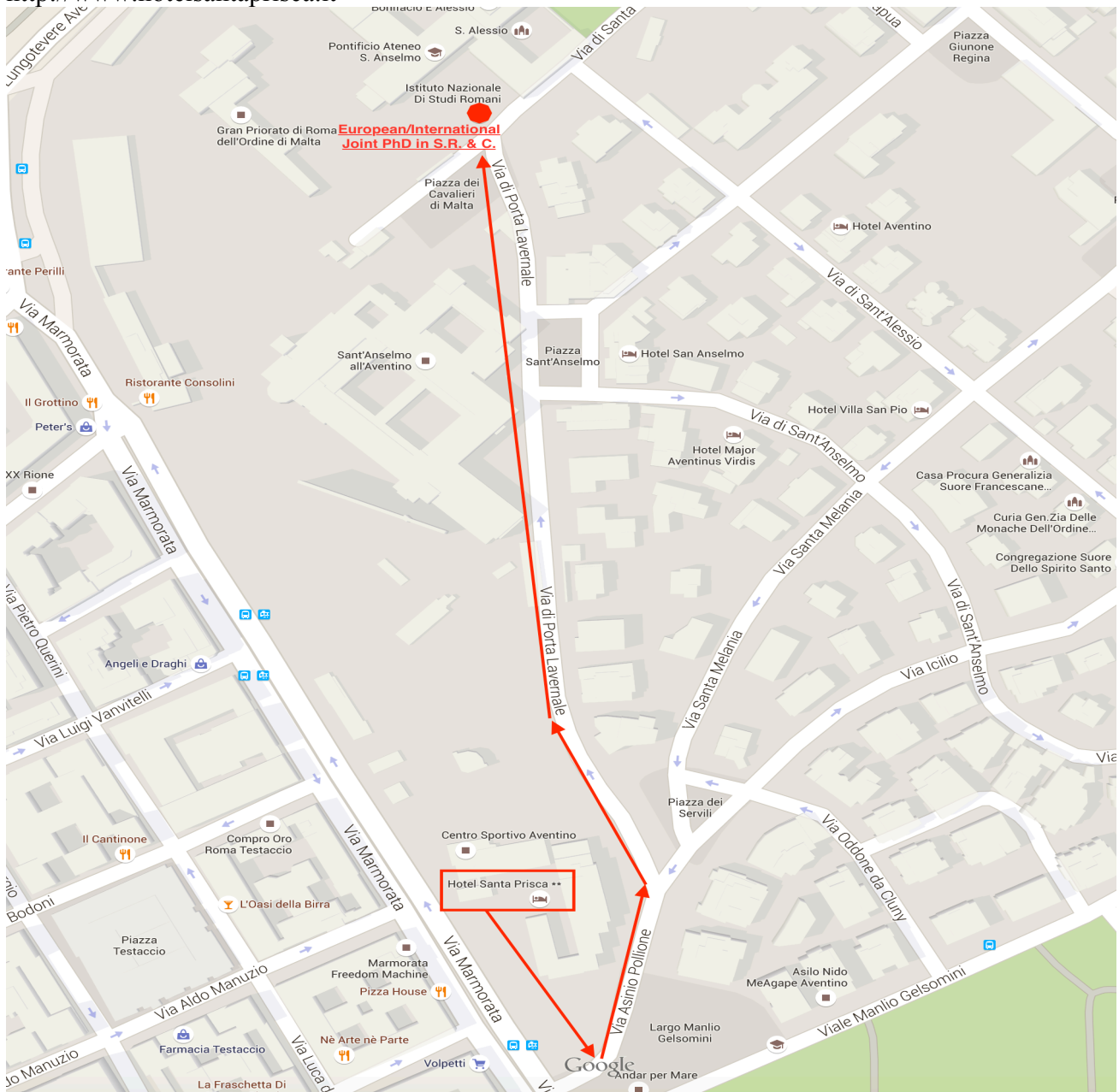
**NOTE:** Metro A and Metro B close at 11:30pm. Termini station is the connection point between Metro A and Metro B. Please be aware that all the above information might be subject to unexpected changes so refer to the Rome Transportation website and maps at: [www.atac.roma.it](http://www.atac.roma.it)

### **ACCOMODATION**

The Hotel San Prisca is 5 minutes walk from the European/International Joint Lab and is located in: Largo Manlio Gelsomini, 25 – 00153 Roma, Italia

Tel: +39 06 574 1917

<http://www.hotelsantaprisca.it>





Funded by the European Union

## GETTING AT HOTEL SANTA PRISCA

The best solution to get to Hotel Santa Prisca from Fiumicino Airport is the following:

- 1) Take the train that drops you at **Stazione Ostiense**; the cost should be of 8 € for a one-way trip. Please note that there are only two train lines from the airport: one goes directly to Termini and the other always passes by Ostiense Station independently from the final destination.
- 2) Go to the bus terminal in front of Ostiense Train Station and take bus 280 that drops you right in front of the hotel in 5 minutes (3 bus stops). The price of the ticket is 1,50 €

