

# How to use VMS Editor

The VMS (Visual Mapping Sentence) program has two functions:

1. Easy editing of a mapping sentence which can be inserted into a Word document
2. Sampling from all facet structuples a limited number of structuples.

## Editing a mapping sentence

In the following we will show how to edit a mapping sentence.

The example is taken from (Guttman and Levy, 1991, page 92)<sup>1</sup> and also (Levy, 1994, page 160)<sup>2</sup>: mapping sentence for the Wechsler Intelligence Tests for Children.

From “File” menu choose “New”.



In the Editor area, appear a template with two facets, a number of sentence fragments and an arrow. The idea is to use this basic template in order to change, delete or insert a Sentence Fragment or a Facet.

You can use “Next” and “Previous” buttons in order to browse the entire mapping sentence.

---

<sup>1</sup> Louis Guttman and Shlomit Levy (1991), Two Structural Laws for Intelligence Tests, *Intelligence*, 15, pp. 79-103.

<sup>2</sup> Levy, S. (Ed.) Louis Guttman on Theory and Methodology: Selected Writings, Aldershot: Dartmouth, 1994.

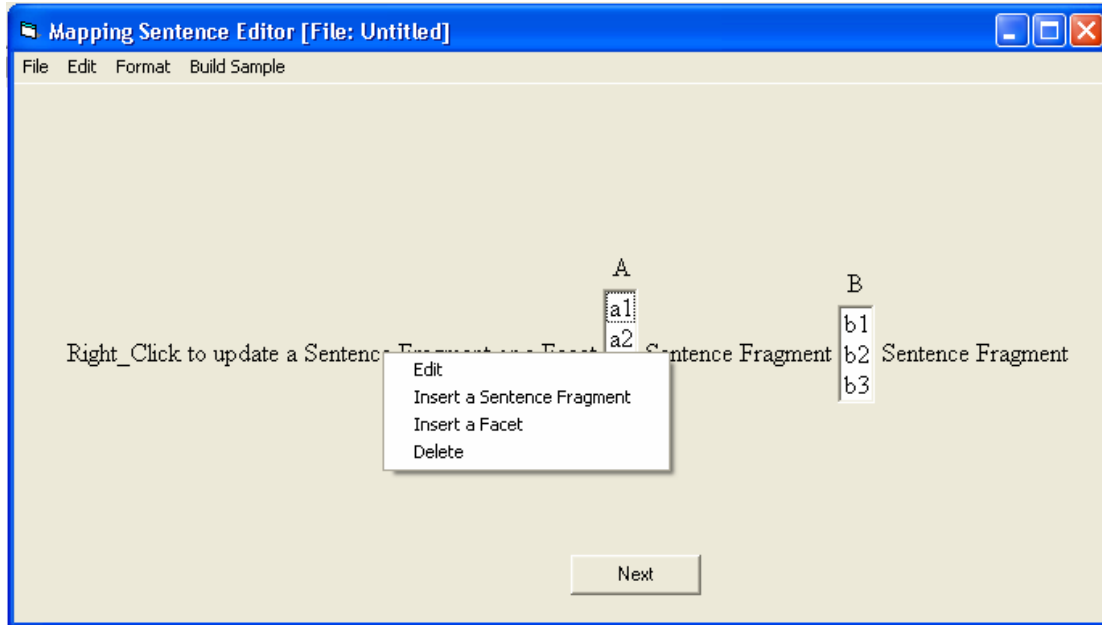
## ***Different kinds of objects in the Editor***

The mapping sentence contains 3 kinds of objects:

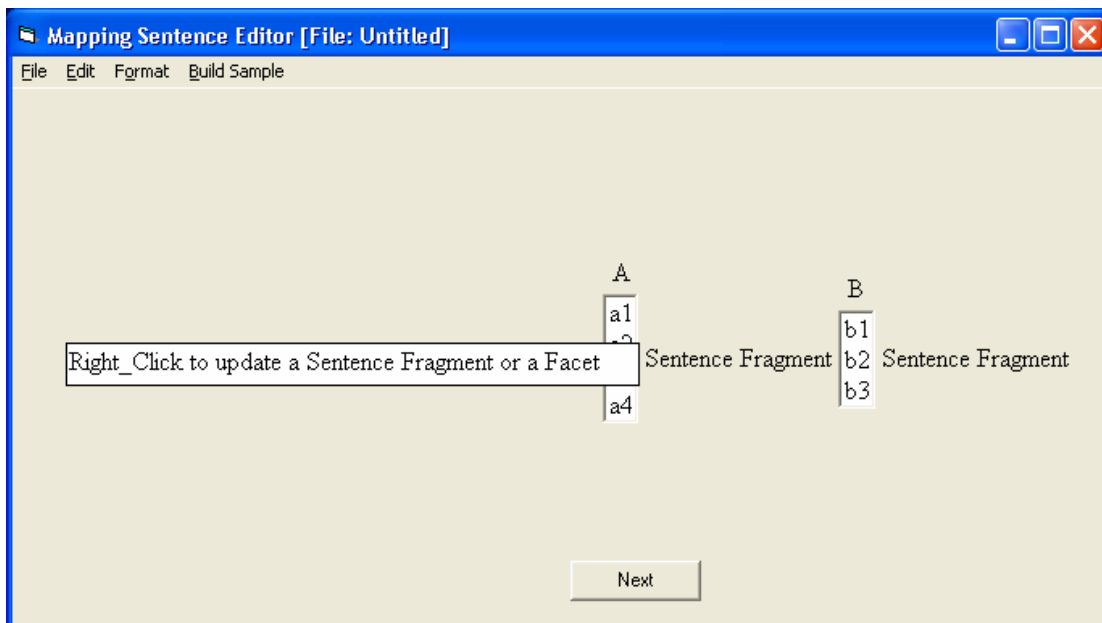
1. Sentence Fragment
2. Facet
3. Arrow (unique)

You can perform 4 functions on an object. For example:

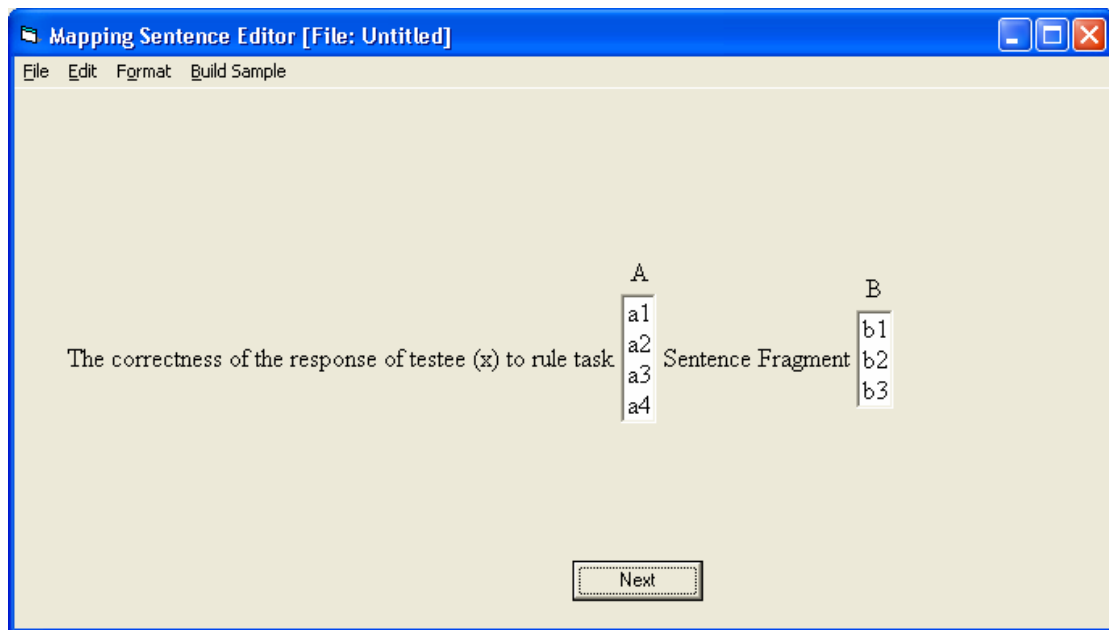
Right Click the first Sentence Fragment and choose “Edit”.



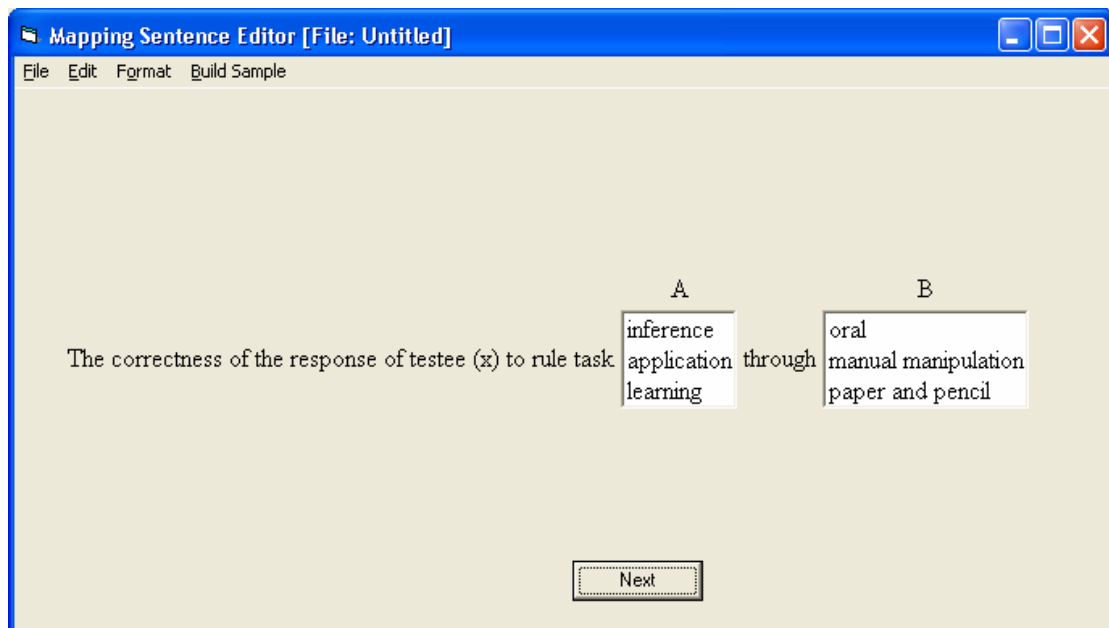
The content appears in a text box. Delete the existing text and type in the desired new text: “The correctness of the ...”.



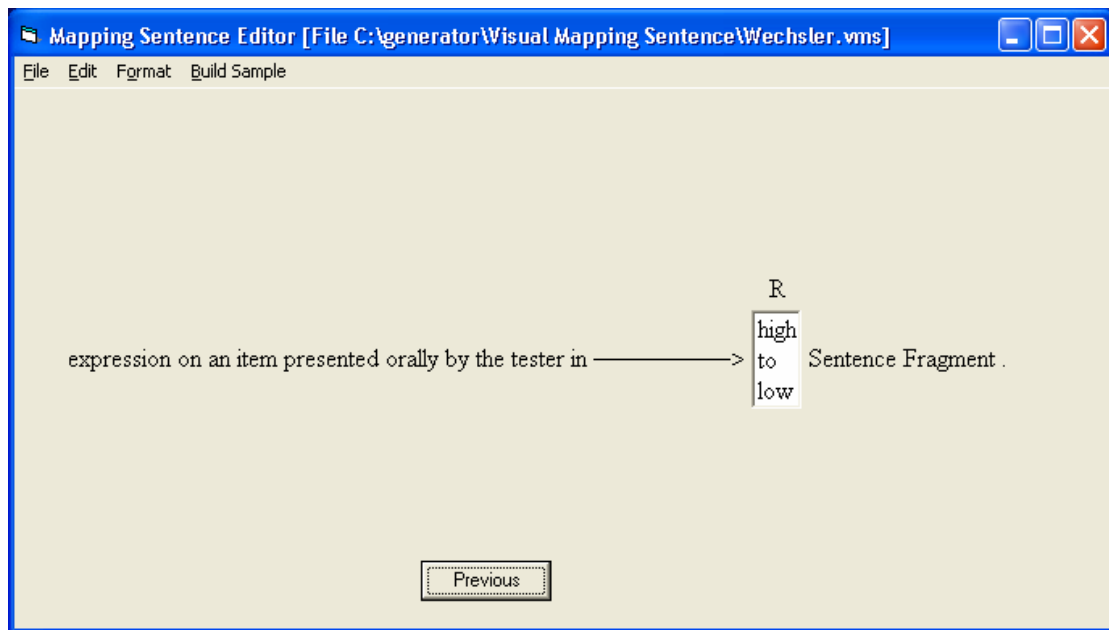
Click anywhere in Editor area in order to complete the function.



In the same manner you can update facets A and B, and the other sentence fragments.



Click “Next” and update the first Sentence Fragment in the window

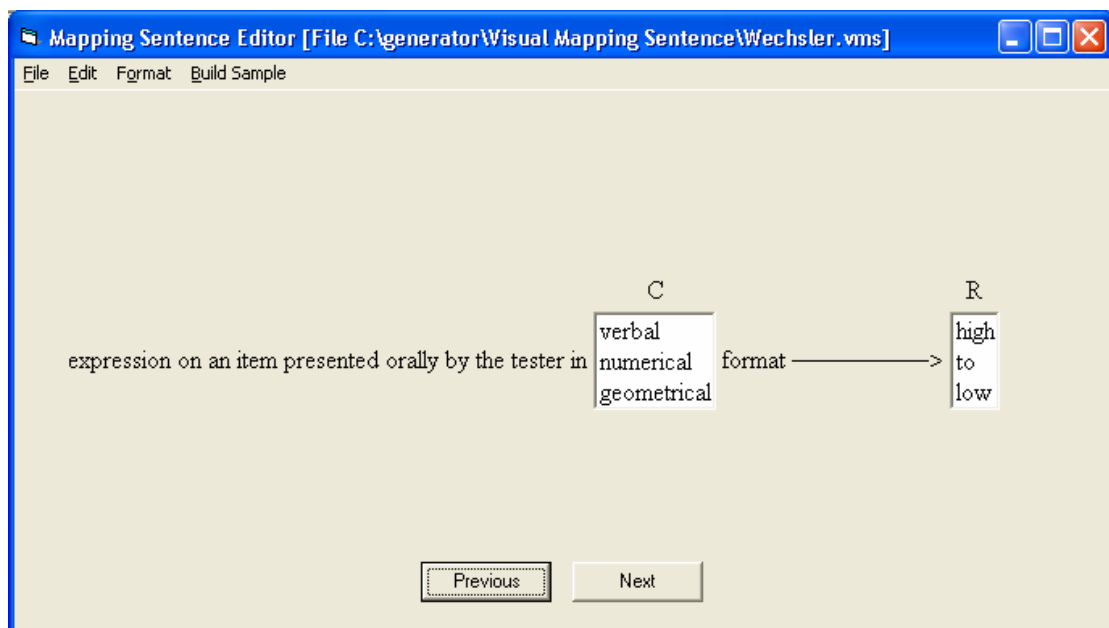


In our example, the mapping sentence contains a third facet C followed by a sentence fragment.

Right Click the arrow object. Note that “Delete” function is disabled. The arrow object cannot be deleted. Choose “Insert a Sentence Fragment”. Type the word “format” in the text box.

Right Click the “format” object and choose “Insert a Facet”. Type the words “verbal”, “numerical” and “geometrical” in the text box. Note that the facet is labeled “???”.

Right Click this label, choose “Edit” and replace “???” by “C”.



Click “Next” and replace the last “Sentence Fragment” by “correctness”.

### ***Inserting the mapping sentence into a Word document***

For this operation, the Word document and the VMS Editor must be opened simultaneously.

In Word, put the cursor at the point where you want the mapping sentence to be located.

Go to VMS Editor at the first window. Click on “Previous” button if necessary.

Perform Ctrl+K on this window to capture the relevant portion. The image is copied into the Clipboard.

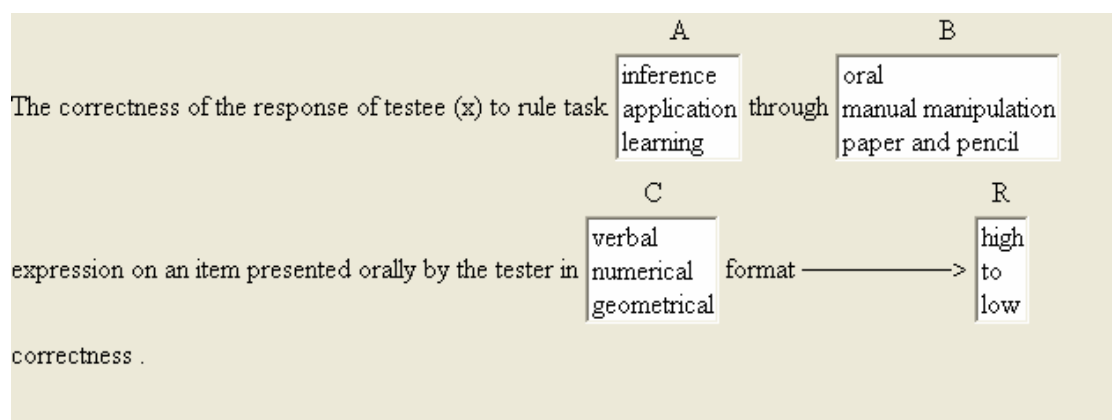
Go to Word and perform Ctrl+V. The image is inserted.

Go to VMS Editor and click on “Next” to get the second window.

Perform Ctrl+K on this window

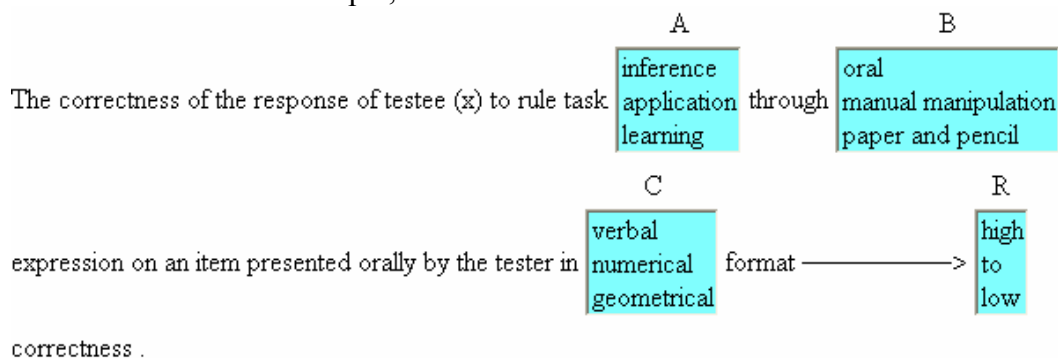
Go to Word and perform Ctrl+V. The second part of the mapping sentence is inserted

The same technique holds for the next windows.



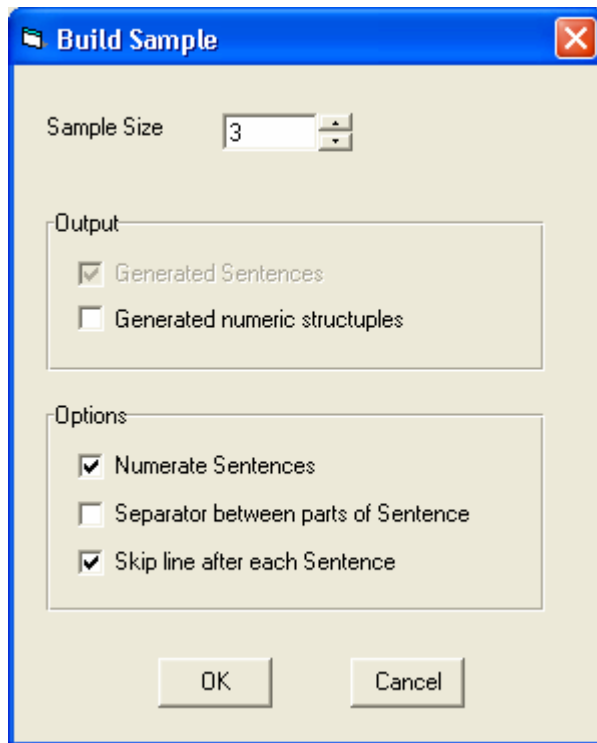
### ***Change appearance of a mapping sentence***

According to your Word document where you insert the mapping sentence, you can change the font, size and backgrounds of the different objects. This can be done by “Format” menu. For example,



## **Sampling structuples**

Click “Build Sample” menu. A window appears with several options. Note that the “Sample size” is set to the minimal number of structuples which cover all elements of each facet.



Increase the sample size from 3 to 20 and click the “OK” button. A window containing the sample appears.

