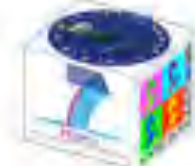




**European/International Joint PhD
in Social Representations and Communication
International Summer School 2014**



European Commission REA-Research Executive Agency
FP7 - PEOPLE Initial Training Networks
So.Re.Com. Joint-IDP
(PITN-GA-2013-607279)



Funded by the European Union

20th International Summer School on Social Representations and Communication

SoReCom Joint IDP People-IDP

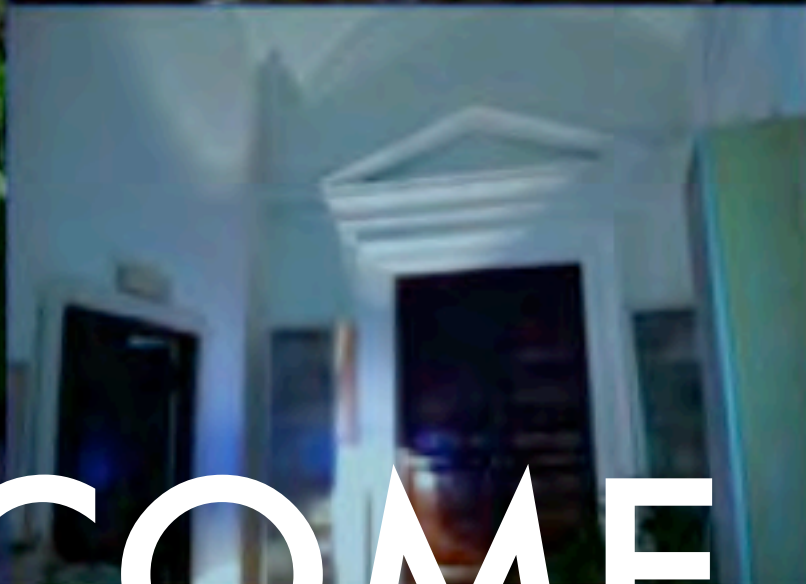
*Early Stage Researchers
First TRAINING EVENT*

Genesis, development and actuality
of the Social Representation theory
in more than fifty years (1961-2011 and beyond):
the main paradigms and the "modeling approach"

July 14/18-7-2014

www.europhd.eu





WELCOME



**The European/International Joint
Ph.D. on Social Representations and
Communication Research Centre
and Multimedia Lab**



So.Re.Com. Joint-IDP

and

**European/International Joint Ph.D.
in Social Representations and Communication**



PEOPLE

first

So.Re.Com. Joint-IDP Early Stage Researchers (1)

	<i>Surname Name</i>	<i>Nationality</i>	<i>Research Project</i>	<i>Place of secondment Sept-Nov. 2015</i>
	Guraliuc Ioana	<i>Romania</i>	<i>Genesis and development of the "structural paradigmatic approach" in more than 50 years of social representation theory: mapping theory, methods, thematic areas and applications</i>	<i>University of Iasi</i>
	Gjorgjioska Marija Adela	<i>Macedonia</i>	<i>Genesis and development of the "socio-dynamic paradigmatic approach" in more than 50 years of social representation theory: mapping theory, methods, thematic areas and applications</i>	<i>University of Lausanne</i>
	Kukharava Maryia	<i>Belorussia</i>	<i>Genesis and development of the "dialogical, conversational and narrative paradigmatic approaches" in more than 50 years of social representation theory: mapping theory, methods, thematic areas and applications</i>	<i>University of Masaryk</i>
	Arhiri Laura	<i>Romania</i>	<i>Genesis and development of the "anthropological and ethnographic paradigmatic approach" in more than 50 years of social representation theory: mapping theory, methods, thematic areas and applications</i>	<i>Universidad Autonoma Metropolitana</i>
	Pastorino Agnese	<i>Italy</i>	<i>Genesis and development of the "modelling paradigmatic approach" in more than 50 years of social representation theory: mapping theory, methods, thematic areas and applications</i>	<i>University of Pais Vasco</i>
	Tomicic Ana	<i>Croatia</i>	<i>Mapping the impact and dissemination of the social representation theory across different geo-cultural contexts: "Europe", the theory's homeland</i>	<i>University of Geneva</i>
	Gherman Mihaela Alexandra	<i>Romania</i>	<i>Mapping the impact and dissemination of the social representation theory across different geo-cultural contexts: "North-America and other continents (Oceania, Asia, Africa)", the new emerging scenarios</i>	<i>University of Ottawa</i>

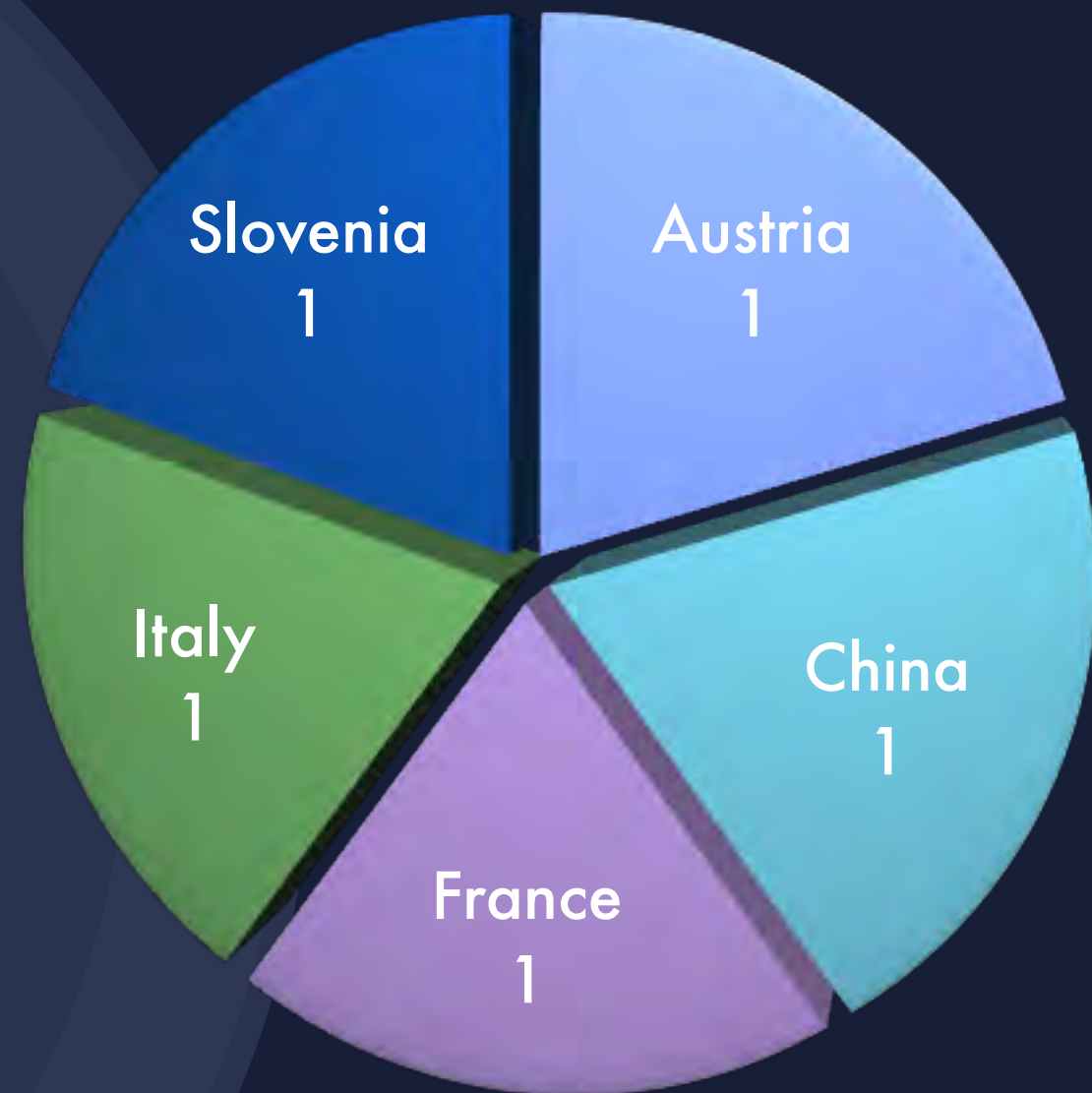
So.Re.Com. Joint-IDP Early Stage Researchers (2)

	<i>Surname Name</i>	<i>Nationality</i>	<i>Research Project</i>	<i>Place of secondment Sept-Nov. 2015</i>
	Miguel Aguilar Carlos Filiberto	<i>Mexico</i>	<i>Mapping the impact and dissemination of the social representation theory across different geo-cultural contexts: "Latin America", the most fertilised scenario</i>	<i>University of Santa Catarina</i>
	Ramazanova Aminat	<i>Russia</i>	<i>Taking stock of the literature in the thematic field of "Science, Social Representations and Communication"</i>	<i>University of Nankai</i>
	De Madaria Borja	<i>Spain</i>	<i>Taking stock of the literature in the thematic field of "Social Representations and Environment"</i>	<i>IFSTTAR</i>
	Panzaru Gabriela	<i>Romania</i>	<i>Taking stock of the literature in the thematic field of "Social Representations, Economy, Advertising, Marketing and Organizational Contexts"</i>	<i>University of Vienna</i>
	Bozanovic Vladan Rafail	<i>Montenegro</i>	<i>Taking stock of the literature in the thematic field of "Social Representations, Community & Health"</i>	<i>University of Belgrano</i>
	Berardi Filomena	<i>Italy</i>	<i>Taking stock of the literature in the thematic field of "Social Representations & Politics: Multidimensional identities, intergroup relations, social movements and active minorities"</i>	<i>University of Valencia</i>

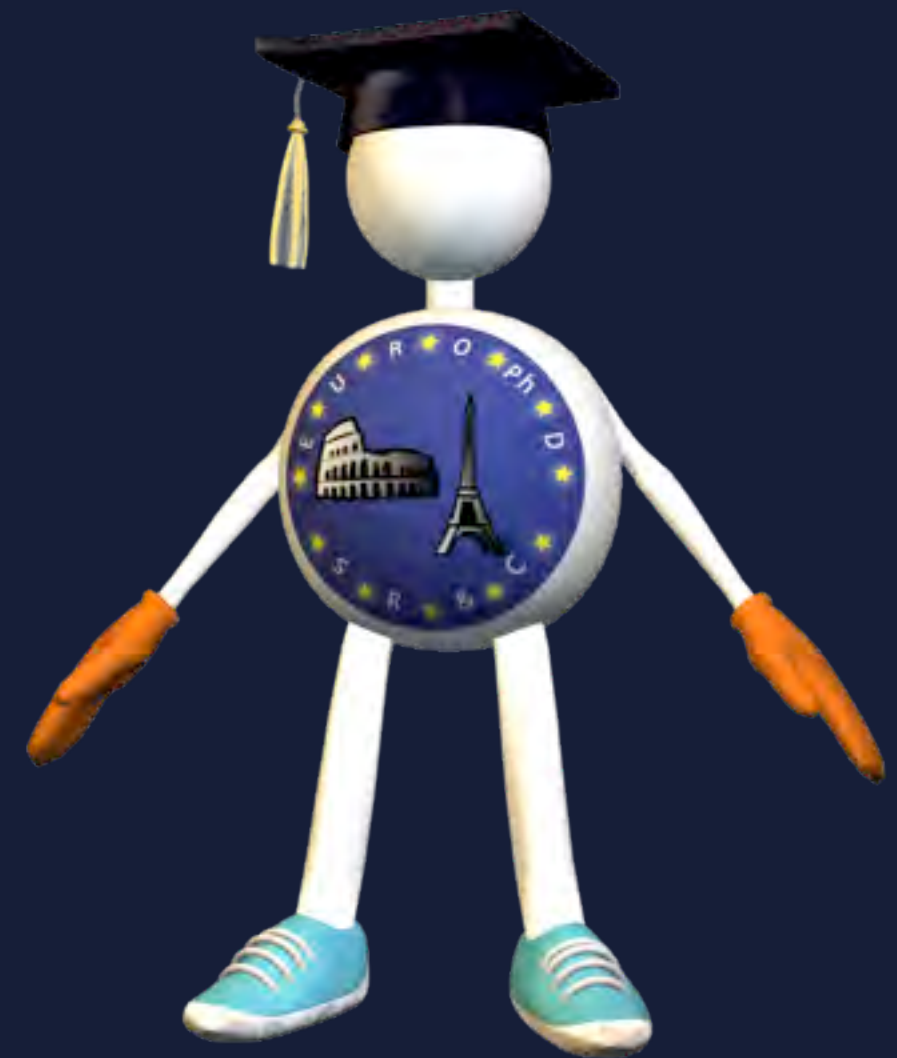
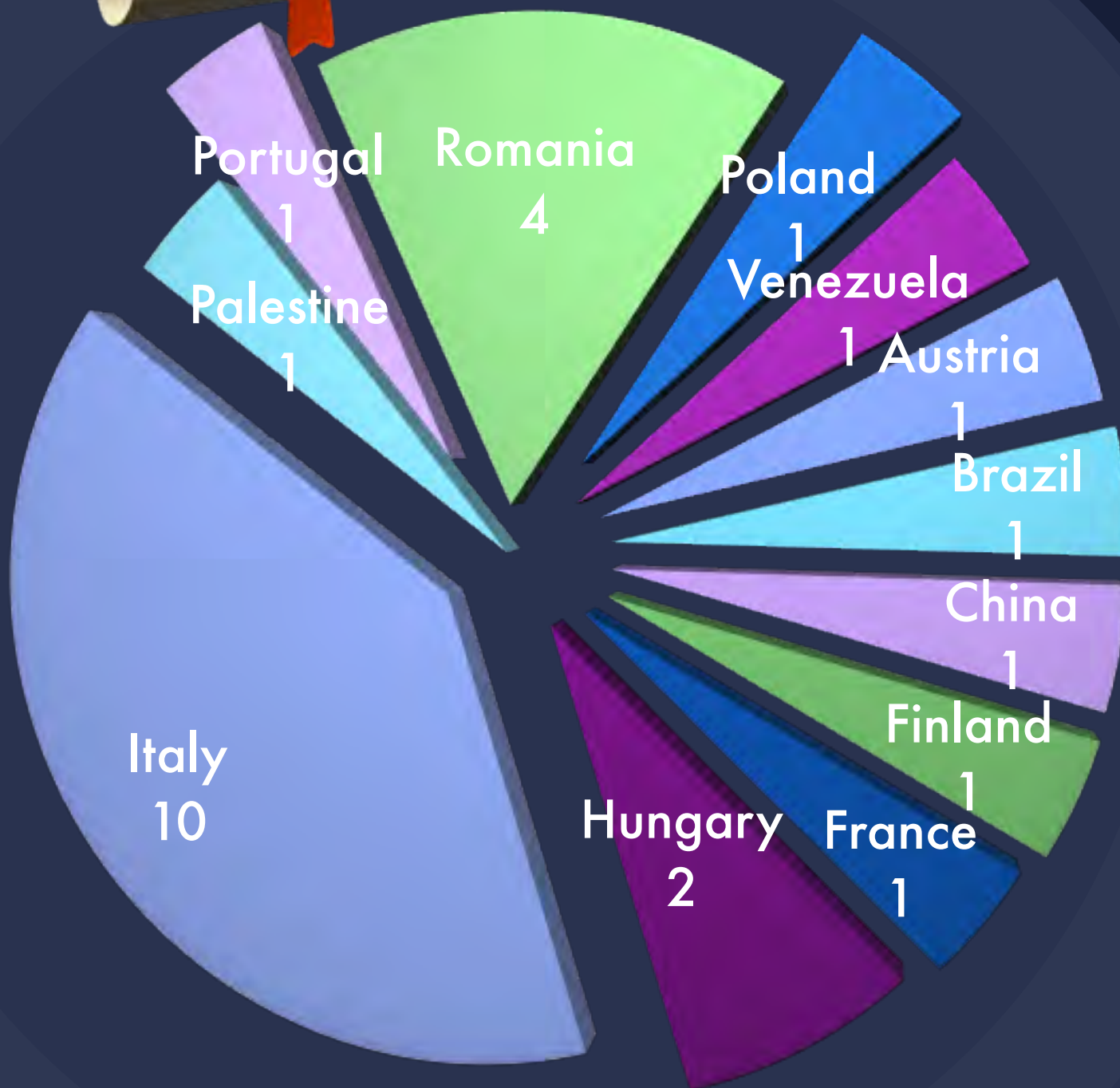
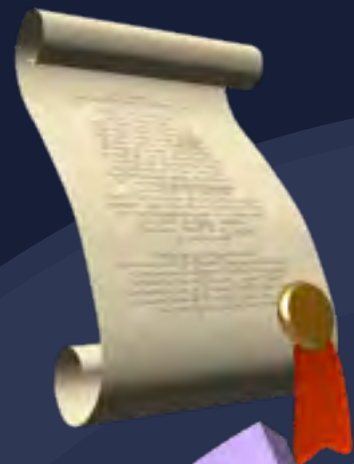
So.Re.Com. Joint IDP:

Integration of the 13 Early Stage Researchers to be recruited in the spring 2014 with the 5 research trainees currently enrolled in the European/International Joint doctorate and the new applicants for the a.y. 2014-15, currently under selection

Name and Surname	Country
Charline Leblanc	France
Alessia Rochira	Italy
Haoxing Wang	China
Petra Carman	Slovenia
Miriam Zehnter	Austria



European/International Joint PhD in Social Representations and Communication degree holders by NATIONALITY



European/International Joint PhD TEACHING BOARD

MEMBERS from SAPIENZA UNIVERSITY OF ROME



Prof. **Bruno Mazzara**, full professor of Social Psychology and Vice Dean of Political Sciences, Sociology and Communication Faculty, *Dipartimento di Comunicazione e Ricerca Sociale CORIS Sapienza Università di Roma* (via Salaria 113 I- 00198 Rome). His research interests include: a) cultural psychology; values and cultural transition; intercultural communication, b) social construction of shared knowledge, social representations and mass media; collective memory, c) social identity and interethnic relations; social construction of prejudice; migration and social integration, d) qualitative methods



Prof. **Giovanna Leone** is Associate Professor of Social Psychology at the Political Sciences, Sociology and Communication Faculty, *Dipartimento di Comunicazione e Ricerca Sociale CORIS Sapienza Università di Roma* (via Salaria 113 I- 00198 Rome).. Her research interests include: a) Social and collective aspects of autobiographical memory, b) Social representation of health and of psychological disease, c) Social and psychological costs of help-seeking and help-receiving, d) Social and psychological processes of in-group and inter-groups reconciliation



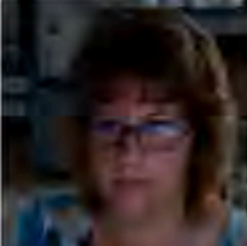




Dr. **Mauro Sarrica**, Ph.D. in Personality and Social Psychology, full researcher at the Political Sciences, Sociology and Communication Faculty, *Dipartimento di Comunicazione e Ricerca Sociale CORIS Sapienza Università di Roma* (via Salaria 113 I- 00198 Rome). His main interests are social construction of knowledge, stability and change of social beliefs, and peace psychology. His studies focus mainly on how people interpret and co-construct social reality in order to face changes and novelties. He has been involved in several international and interdisciplinary researches on Internet and Communication Technologies. In these fields he studied the social representations of ICTs, the impact of Internet on journalist's practices, the use of online forum to motivate and coordinate collective actions.



Dr. **Paola Passafaro**, Ph.D. Researcher in Social Psychology at the Faculty of Medicine and Psychology, *Dipartimento di Psicologia dei Processi di Sviluppo e Socializzazione P.P.S.S.* (via dei Marsi, 78 – 00185 Rome). Her research interests include: Social Psychology, Environmental Psychology, Psychological determinants of pro-environmental and sustainable behaviours, environmental education, sustainable tourism.

Collaborators and Doctoral Research Trainees currently present at the European/International Joint PhD Lab

	<p>Dr. Robert Barakat, Deputy Lab manager, project manager and webmaster. He is dedicated to the management of correspondence and development of all the on-going and planned activities, to the Physical and Virtual Libraries, the management of databases (INFOSTUD, CINECA, SAPERI etc.), the coordination of interns at the Lab and the management of the structure's organizational tasks (languages: French and Arab mother tongue, English, Italian)</p> <p>Presence at the Lab: Monday through Friday from 8:00 to 17:00</p>
	<p>Mr. Dalisay Toribio (Jerry), assistant for the logistical care of the structure (cleaning, repairs, etc.) (languages: Filipino mother tongue, Italian and English)</p> <p>Presence at the Lab: Tuesday and Thursday from 13:00 to 17:00</p>
	<p>Dr. Elena Bocci, European Ph.D. holder, researcher at the Faculty of Medicine and Psychology, involved in various research projects (representations of mental illness, new media, intergenerational relations etc.), with didactical support tasks at the Medicine and Psychology Faculty, methodological tutoring for undergraduates and Ph.D. research trainees, training on particular data-gathering techniques and software of data analysis (languages: Italian mother tongue, English and French)</p> <p>Presence at the Lab: Monday, Tuesday and Thursday from 11:00 to 17:00</p> <p>Presence at the Faculty: Wednesday from 11:00 to 17:00</p>
	<p>Dr. Laura Dryjanska, full-time European Ph.D. post-doc with support tasks on theoretical and methodological tutoring on the meta-theoretical analysis of the literature on social representations. She also collaborates to the research project on historical capitals, place identity and representations in tourists and residents (languages: Polish mother tongue, English, Italian and Spanish)</p> <p>Presence at the Lab: Monday through Friday from 8:00 to 17:00</p>
	<p>Dr. Haoxing Wang, Chinese, European Ph.D. research trainee, working on the elaboration of her doctoral thesis, linked to the research project <i>Mass Psychology of Stock Market in China and Sources of Media Analysis</i> (languages: Chinese mother tongue and English)</p> <p>Presence at the Lab: Monday through Friday from 8:00 to 17:00</p>
	<p>Dr. Petra Carman, Slovenian, European Ph.D. research trainee, working on the elaboration of her doctoral thesis on <i>Culture of Peace in a Multicultural Society</i> (languages: Slovenian mother tongue, English and some Italian)</p> <p>Presence at the Lab: Monday through Friday from 8:00 to 17:00</p>

EUROPEAN/INTERNATIONAL JOINT PhD LAB DIRECTOR



Annamaria Silvana de Rosa, Ph.D. in Psychology is **Full Professor** of Attitudes and Social Representations, Psychology of Communication and New Media, and Social Psychology of the Family at the Faculty of Medicine and Psychology - University of Rome "Sapienza", Italy; **Rector's Delegate for EUA-CDE Council of Doctoral Education**.

Professor de Rosa has been a motor for reform in doctoral research training and one of the best-informed and most passionate educators encouraging innovation in doctoral education in Europe. She has made important scientific and institutional contributions to the internationalisation of the doctorate and has participated extensively in discussions in European and international forum, where she is widely considered an expert on the reform of European doctoral programmes and other research training issues. Her active contribution to the European University Association is well known, especially since her participation as **leader of the EUA Doctoral Project "Network of networks"**.

She created and is the Programme Director of the first international joint doctorate, awarding a mutually recognized "European doctoral diploma" under the joint signatures of the rectors of the network universities (<http://www.europhd.eu>): the *European/International Joint PhD in Social Representations and Communication*, that since 1993 has been approved by the European Commission (DG-Education and Culture and DG - Research) as well as by the Ministries for Scientific Research and Higher Education of Italy, France, the Czech Republic and Romania and sponsored by the French social sciences Foundation Maison des Sciences de l'Homme (FMSH). Fully operational since 1996, the original network of 13 European universities has since grown to 29 universities, research institutes and SMEs in 20 countries around the world. 18 universities in 9 European countries (AT, CZ, FR, IT, PT, RO, SK, ES, CH, UK) and 7 universities from North America, Latin America and China, 1 national research institute (IFSTTAR) in France; 1 social sciences foundation (FMSH) and 3 enterprises partners in Netherland, Italy and Sweden. Among them 16 associated partners have been chosen and have recently adhered to the PEOPLE-ITN **SoReComJoint-IDP** project (13 universities, 2 private companies, 1 national research institute IFSTTAR with intensive and extensive cooperation with the private sector) in 8 European countries (Austria, Czech Republic, France, Italy, Romania, Spain, Sweden, Switzerland) and in 6 extra-European countries (Argentina, Brazil, Canada, China, Mexico, United States) (<http://www.europhd.eu/SoReComJoint-IDP>). Within the FP7 PEOPLE-ITN-2013 programme, the **SoReComJoint-IDP** project has been selected as being the best among the 1147 submitted proposals, obtaining mark of 98,80/100 (threshold: 70/100).



So.Re.Com. Joint IDP: dedicated web-site platform



European Credit Transfer System (ECTS) adopted by the Euro PhD on Social Representations and Communication

Due to the integrated and joint nature of the programme, the adoption of **European Credit System** has been specifically designed as a system for credit accumulation, rather than a comparison of distributed teaching offers and transfer of learning outcomes. By conceptualizing the academic year not exclusively in terms of time, but in terms of earned credits, the system allows for flexibly meeting the needs of full-time and part-time research trainees.

In line with the policy recommended by EU DG-Education and Culture, the European Ph.D. adopted the European Credit Transfer System (ECTS) as an instrument for creating transparency and confidence in academic performance.

Research trainees are awarded up to 60 credits per year (20 for courses and didactic activities and 40 for research quality and related bibliographic knowledge).

The didactic structure within this overall strategy is highly innovative. As the system of **open distance learning** makes clear, European Ph.D. research trainees are involved in an interlocking system of **virtual and physical mobility** which allows for considerable **flexibility** in catering to research trainees' needs while at the same time guaranteeing individual **tutoring and interactive learning**:

E.C.T.S. system of credit FOR THE EURO PHD ON S.R. & C.

20 for courses and didactic activities	10 credits per year		international summer schools
	5 credits per year		seminars and courses
	5 credits per year		multi-media and distance interactive learning
40 for research each year =	30 credits per year		advanced research training
	10 credits per year		bibliographic knowledge
60 total credits in a year x 3 years = 180 total credits for complete curriculum			



4 years planning (2014-2017) Network-wide Training Activities

So.Re.Com. Joint IDP

	Training events, workshops & conferences	Description of the content	Days & location	from Associated Partners
1	2014 International Summer School: <ul style="list-style-type: none"> • <i>General introduction</i> of the overall project aimed to take stock of the scientific field developed in more than 50 years by conducting an empirical meta-theoretical analysis of the literature on Social Representations, mapping the development of different paradigms, the related various research methods (qualitative and quantitative, experimental and field oriented, etc.), the wide range of the thematic areas, and their impact on the various applied fields within the multi-generational community of scientists and across different geo-cultural contexts • <i>Key lecture</i> on previously published results and presentation of the current status of the research program on the meta-theoretical analysis of the Social Representation theory • <i>Key lectures</i> on the genesis, development and actuality of the Social Representation theory in more than fifty years (1961-2011 and beyond): overview of the <i>main paradigms</i> • <i>Illustration of the "modelling approach"</i> developed at the leading Institution of the So.Re.Com. Joint IDP, host of the ESR, with the active participation of researchers and EuroPhD holders involved in different empirical research programs dealing with multiple constructs, thematic objects, methods, multi-step data analysis strategies • <i>Questions, Answers and Group discussion</i> of the ESR and other European/ International Joint PhD trainees with project leader and invited speakers • <i>Active participation by the ESR</i> by presenting the matching of their prior knowledge and interests with the research project focuses offered in the call, their multi-languages skills and the planned future secondment by optimising the complementary resources training across the network • <i>@-learning activities:</i> use of the Euro PhD web-auditorium, allowing connection with a wider number of participants or speakers selected/invited - even from outside the So.Re.Com. Joint IDP - to attend the event on-line via interactive video-web conference system • <i>Training in complementary and transferable skills</i> provided by the non-academic partners • <i>Scientific networking</i> • <i>Monitoring quality control sessions</i> • <i>Dissertation defence</i> by European PhD doctoral candidates enrolled in previous years in front of the European PhD International Evaluation Board (Final Jury) 	<p>Genesis, development and actuality of the Social Representation theory in more than fifty years (1961-2011 and beyond): the <i>main paradigms</i> and the "modelling approach"</p>	<p>7 days 13th - 19th July 2014 Rome</p>	<p>UNIROMA1 (Italy) + A selection of invited speakers from all the Academic Associated Partners:</p> <p>MU (Czech Republic) UAIC (Romania) UNIWIEN (Austria) UPV/EHU (Spain) UNIVAL (Spain) UNIGE (CH) UNIL (CH) UB (Argentina) UFSC-Brazil UAM (Mexico) CUNY (USA) uOttawa (Canada) Nankai Uni (China)</p> <p>+ and from the extra-academic associated partners:</p> <p>IESITAB (France) CL (Italy) CONERI (Sweden)</p>
2	International Lab Meeting: 2015 Winter Session <ul style="list-style-type: none"> • <i>Key lecture</i> by the research leader, creator of the twenty-year wide research project and related theoretical-methodological tools and their web implementation aimed at the Meta-Theoretical analysis of complete body of the Social Representations literature • <i>Presentations by expert post-docs</i> and advanced European/International Joint PhD doctoral trainees involving a <i>multigenerational community of senior and junior scientists</i> that ranges from visiting post-docs to Euro PhD Alumni (including former Marie Curie Fellows), already well trained in the <i>meta-theoretical analysis</i> of the specialised literature on Social Representations • <i>Training the early research trainees (ESR)</i> for developing advanced bibliographic on-line search skills via access to specialised websites and digital libraries, aimed at developing the large specialised full bibliographic inventory and the So.Re.Com. specialised virtual library 	<p>Training in the <i>meta-theoretical analysis</i> of the specialised literature on Social Representations and Communication:</p> <p>why and how to map the development of different paradigms, the related research methods, the thematic areas, their impact on the various applied fields and the new emerging research directions within the multi-generational</p>	<p>4 days 25th-28th January 2015 Rome</p>	<p>UNIROMA1 (Italy) + EuroPhD Alumni from partners Institutions and post-docs EuroPhD holders also from outside the network</p>

4 years planning (2014-2017) Network-wide Training Activities

So.Re.Com. Joint IDP

	<ul style="list-style-type: none"> developing the large specialised full bibliographic inventory and the SoReCom specialised virtual library Training Guidelines for integrating bibliographic resources in the physical and digital SoReCom specialised libraries Training the ESR in the meta-theoretical analysis grid and tools of the meta-analysis inventory Illustration of the double quality control system Co-ordination and planning session for the organisation of weekly individual and group ESR small meetings on the transversal common tools of the overall research program and the specific goals of each of the 13 research focuses. 	directions within the multi-generational community of scientists and across different geo-cultural contexts.		
3	International Lab Meeting: 2015 Spring Session <ul style="list-style-type: none"> Key lectures on classical contributions and recent development in the <i>Anthropological</i>, <i>Narrative</i>, <i>Dialogical</i> and <i>Subjective</i> approaches to Social Representations Questions, Answers and Group discussion of the ESR and other European/ International Joint PhD trainees with project leader and invited speakers Advanced training in epistemological issues on research setting and empirical data detection/construction, in observational, ethnographic and conversational methods Illustration of specific software and statistical packages for conversational and textual data analysis and results visualization Training in complementary skills Scientific networking Monitoring quality control sessions 	The "Anthropological", "Narrative", "Dialogical" and "Subjective" paradigmatic approaches to Social Representations: classical contributions and recent developments, related methods and data analysis strategies	4 days 26th -29th April 2015 Rome	UNIROMA1 (Italy) + A selection of invited speakers from all the Academic Associated Partners: MU (Czech Republic) UAIC (Romania) UNIWIEN (Austria) UPV/EHU (Spain) UNIVAL (Spain) UNIGE (CH) UNIL (CH) UB (Argentina) UFSC-Brazil UAM (Mexico) CUNY (USA) uOttawa (Canada) Sankai Uni (China)
4	2015 International Summer School <ul style="list-style-type: none"> General introduction of the overall project on the meta-theoretical analysis with specific focus on the impact and dissemination of the social representation theory around the world: from Europe to other continents Key lectures by scientists from the leading Institution and associated partners from different geo-cultural contexts: Europe, North America (Canada and USA), Latino-America (Argentina, Brazil, Mexico), Asia (China) Questions, Answers and Group discussion of the ESR and other European/ International Joint PhD trainees with project leader and invited speakers Active participation by the ESR and other European/ International Joint PhD trainees by presenting the current status of the ongoing research projects @-learning activities: use of the Euro PhD web-auditorium, allowing connection with some speakers - even from outside the SoReCom Joint IDP - invited to attend the event on-line via interactive video-web conference system Training in complementary and transferable skills provided by the non-academic partners Scientific networking Monitoring quality control sessions Dissertation defence by European PhD doctoral candidates enrolled in previous years in front of the European PhD International Evaluation Board (Final Jury) General Mid-Term Meeting with all European and extra-EU associated partners and extra-academic partners Final coordination of the activities to be undertaken during the secondments for each of the 13 ESR 	Mapping the impact and dissemination of the social representation theory across different geo- cultural contexts around the world: from Europe towards other continents	8 days 18th -25th July 2015 Rome	UNIROMA1 (Italy) + All the extra -EU Academic Associated Partners: UB (Argentina) UFSC-Brazil UAM (Mexico) CUNY (USA) uOttawa (Canada) Sankai Uni (China) + all the European Academic Associated Partners invited for the General Mid-Term Meeting: MU (Czech Republic) UAIC (Romania) UNIWIEN (Austria) UPV/EHU (Spain) UNIVAL (Spain) UNIGE (CH) UNIL (CH) + all the extra-academic associated partners invited for the General Mid-Term Meeting: JESSUR (France) CL (Italy) CONERI (Sweden)
5	International Lab Meeting: 2016 Winter Session <ul style="list-style-type: none"> Key lectures by the project leader aimed at presenting 	Training in the meta-theoretical analysis of the	4 days 24th -27th	UNIROMA1 (Italy) +

4 years planning (2014-2017) Network-wide Training Activities

So.Re.Com. Joint IDP

	<p>update results based on the <i>meta-theoretical analysis</i> of the specialised literature on Social Representations and Communication</p> <ul style="list-style-type: none"> <i>Presentations by ESR and other European/International Joint PhD doctoral trainees</i> on their current research progress on meta-theoretical analysis, also including outcomes of their secondment mobility stages <i>Feedback by the project leader and expert post-docs</i> from visiting Euro PhD Alumni, already well trained in the in the meta-theoretical analysis of the specialised literature on Social Representations <i>Illustration of the achieved results</i> based on the double quality control system <i>Co-ordination and planning session</i> for the organisation of weekly and monthly group ESR small meetings for the progress management of the overall research program and each individual research focus. 	<p>specialised literature on Social Representations and Communication:</p> <p><i>mapping the development of different paradigms, the related research methods, the thematic areas, their impact on the various applied fields and the new emerging research directions within the multi-generational community of scientists and across different geo-cultural contexts.</i></p>	<p>January 2016</p> <p>Rome</p>	<p><u>EuroPhD</u> Alumni from partners Institutions and post-docs <u>EuroPhD</u> holders also from outside the network</p>
6	<p>International Lab Meeting: 2016 Spring Session</p> <ul style="list-style-type: none"> <i>Key lectures</i> on classical contributions and recent development in the specific target theme of the "Structural" approach to Social Representations <i>Questions, Answers and Group discussion</i> of the ESR and other European/ International Joint PhD trainees with project leader and invited speakers <i>Advanced training in empirical and experimental methods and techniques</i> specifically designed for the "Structural" approach to Social Representations <i>Illustration of specific statistical software</i> for data analysis according to the "Structural" approach <i>Training in complementary skills</i> <i>Scientific networking</i> <i>Monitoring quality control session</i> 	<p>The "Structural" paradigmatic approach to Social Representations:</p> <p><i>classical contributions and recent developments, related methods and data analysis strategies</i></p>	<p>4 days</p> <p>17th -20th April 2016</p> <p>Rome</p>	<p>UNIROMA1 (Italy)</p> <p>A selection of invited speakers from all the Academic Associated Partners:</p> <p>MU (Czech Republic)</p> <p>UAIC (Romania)</p> <p>UNIWIE (Austria)</p> <p>UPV/EHU (Spain)</p> <p>UNIVAL (Spain)</p> <p>UNIGE (CH)</p> <p>UNIL (CH)</p> <p>UB (Argentina)</p> <p>UFSC-Brazil</p> <p>UAM (Mexico)</p> <p>CUNY (USA)</p> <p><u>UQAM</u> (Canada)</p> <p><u>Nankai</u> Uni (China)</p>
7	<p>2016 International Summer School</p> <ul style="list-style-type: none"> <i>General introduction</i> of the overall project on the meta-theoretical analysis with specific focus on the <i>methodological polytheism</i> in the Social Representations literature and its implication in the contemporary communication era <i>Key lectures by scientists from the leading Institution and associated partners</i> about distinctiveness and dialogue between multiple research methods (textual and image-based research sources and tools, traditional and new media-based research design, experimental and field oriented studies) <i>Questions, Answers and Group discussion</i> of the ESR and other European/ International Joint PhD trainees with project leader and invited speakers <i>Active participation by the ESR</i> by presenting the current status of the research project <i>@-learning activities:</i> use of the Euro PhD web-auditorium, allowing connection with some speakers - even from outside the SoReCom Joint IDP - invited to attend the event on-line via interactive video-web conference system <i>Training in complementary and transferable skills</i> provided by the non-academic partners <i>Scientific networking</i> <i>Monitoring quality control sessions</i> <i>Dissertation defence</i> by European PhD doctoral candidates enrolled in previous years in front of the European PhD International Evaluation Board (Final Jury) 	<p>The "methodological polytheism in the Social Representations literature and its implication in the contemporary communication era:</p> <p><i>distinctiveness and dialogue between multiple research methods (textual and image-based research sources and tools, traditional and new media-based research design, experimental and field oriented studies)</i></p>	<p>7 days</p> <p>17th -23rd July 2016</p> <p>Rome</p>	<p>UNIROMA1 (Italy)</p> <p>A selection of invited speakers from all the Academic Associated Partners:</p> <p>MU (Czech Republic)</p> <p>UAIC (Romania)</p> <p>UNIWIE (Austria)</p> <p>UPV/EHU (Spain)</p> <p>UNIVAL (Spain)</p> <p>UNIGE (CH)</p> <p>UNIL (CH)</p> <p>UB (Argentina)</p> <p>UFSC-Brazil</p> <p>UAM (Mexico)</p> <p>CUNY (USA)</p> <p><u>UQAM</u> (Canada)</p> <p><u>Nankai</u> Uni (China)</p> <p>and from the <u>extra-academic</u> associated partners:</p> <p><u>IFSTTAR</u>(France)</p> <p>CL (Italy)</p> <p>CONERI (Sweden)</p>
8	<p>International Lab Meeting:</p>	<p>Training in the</p>	<p>4 days</p>	<p>UNIROMA1 (Italy)</p>

4 years planning (2014-2017) Network-wide Training Activities

So.Re.Com. Joint IDP

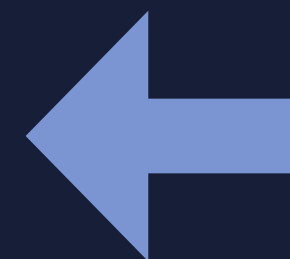
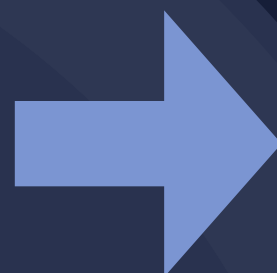
	2017 Winter Session <ul style="list-style-type: none"> • <i>Key lecture by the project leader</i>, in order to present the progress of the overall research program • <i>Presentations by ESR and other European/International Joint PhD doctoral trainees</i> on their current research progress on meta-theoretical analysis • <i>Feedback by the project leader and expert post-docs</i> from visiting Euro PhD Alumni), already well trained in the in the meta-theoretical analysis of the specialised literature on Social Representations • <i>Illustration of the achieved results</i> based on the double quality control system • <i>Co-ordination and planning session</i> for the organisation of weekly and monthly group ESR small meetings for the progress management of the overall research program and each individual research focus. 	meta-theoretical analysis of the specialised literature on Social Representations and Communication: mapping the development of different paradigms, the related research methods, the thematic areas, their impact on the various applied fields and the new emerging research directions within the multi-generational community of scientists and across different geo-cultural contexts.	29 th January - 1 st February 2017 Rome	EuroPhD Alumni from partners Institutions and post-docs EuroPhD holders also from outside the network
9	International Lab Meeting: 2017 Spring Session <ul style="list-style-type: none"> • <i>Key lectures</i> on classical contribution and recent development in the specific target theme of the "Socio-Dynamic" approach to Social Representations • <i>Questions, Answers and Group discussion</i> of the ESR and other European/ International Joint PhD trainees with project leader and invited speakers • <i>Advanced training in empirical and experimental research designs</i> inspired by the "Socio-Dynamic" approach to Social Representations • <i>Illustration of statistical data analysis strategies</i> according to the "Socio-Dynamic" approach • <i>Training in complementary skills</i> • <i>Scientific networking</i> • <i>Monitoring quality control sessions</i> 	The "Socio-Dynamic" paradigmatic approach to Social Representations: classical contributions and recent developments, related methods and data strategies analysis	4 days 16 th - 19 th April 2017 Rome	UNIROMA1 (Italy) A selection of invited speakers from all the Academic Associated Partners: MU (Czech Republic) UAIC (Romania) UNWIEN (Austria) UPV/EHU (Spain) UNIVAL (Spain) UNIGE (CH) UNIL (CH) UB (Argentina) UFSC-Brazil UAM (Mexico) CUNY (USA) uOttawa (Canada) Nankai Uni (China)
10	2017 International Summer School / Final Conference <ul style="list-style-type: none"> • <i>General introduction</i> of the overall project on the meta-theoretical analysis with specific focus on the wide range of societal issues investigated in the various thematic areas in multiple applied contexts • <i>Key lectures by scientists from the leading Institution and associated partners</i> about key studies conducted within the supra-disciplinary Social Representations research field: from economics to the environment, politics, health and community issues, science and communication • <i>Questions, Answers and Group discussion</i> of the ESR and other European/ International Joint PhD trainees with project leader and invited speakers • <i>Active participation by the ESR</i> by presenting the current status of the research project • <i>@-learning activities</i>: use of the Euro PhD web-auditorium, for the dissemination of the results of the various research teams to all the associated partners and a wider audience - even from outside the So.Re.Com. Joint IDP - invited to attend the event on-line via interactive video-web conference system • <i>Training in complementary skills</i> • <i>Scientific networking</i> • <i>Monitoring quality control sessions</i> • <i>Dissertation defence</i> by the 13 ESR and other European PhD doctoral candidates in front of the European PhD International Evaluation Board (Final Jury) 	Social Representations in the social arena faced with social demand: the impact of this supra-disciplinary research field on the wide range of societal issues investigated in the various thematic areas in multiple applied contexts (from economics to the environment, politics, health and community issues, science and communication)	7 days 16 th - 22 nd July 2017 Rome	UNIROMA1 (Italy) A selection of invited speakers from all the Academic Associated Partners: MU (Czech Republic) UAIC (Romania) UNWIEN (Austria) UPV/EHU (Spain) UNIVAL (Spain) UNIGE (CH) UNIL (CH) UB (Argentina) UFSC-Brazil UAM (Mexico) CUNY (USA) uOttawa (Canada) Nankai Uni (China) and from the extra-academic associated partners: IESTTAR(France) CL (Italy) CONERI (Sweden)



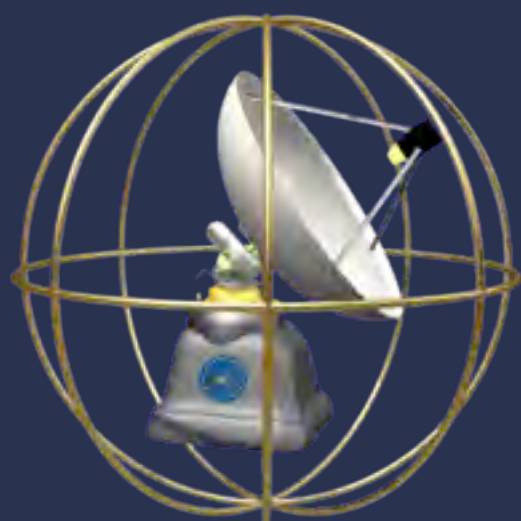
Integrated PHYSICAL and VIRTUAL MOBILITY

NETWORK-TRAINING EVENTS

INTERNATIONAL SUMMER SCHOOLS



International Lab Meetings via Euro PhD web auditorium



International Summer Schools on Social Representations and Communication



- 1995** FINLAND (Lathi) 1st International Summer School: "Evereday thinking, Social Representations and Communication"
- 1996** FRANCE (Aix-en-Provence) 2nd International Summer School: "Multiple strategies in the investiagtion of Social Representations"
- 1997** PORTUGAL (Lisbon) 3rd International Summer School: "S.R. theory: historical roots, articulation and developent"
- 1998** SPAIN (San Sebastian) 4th International Summer School: "The theory towards applications"
- 1999** ITALY (Rome) 5th International Summer School: "Developing European Doctoral Training"
- 2000** ITALY (Rome) 6th International Summer School: "Social Representations Theory Around the World"
- 2001** ITALY (Rome) 7th International Summer School: "Communication: Languages, Representations, Interaction"
- 2002** ITALY (Rome/Genazzano) 8th International Summer School: "Communication, Media, Social Interactions and Social Representations" - New Media: Nets and Internet
- 2003** ITALY (Rome/Genazzano) 9th International Summer School: "Communication, Media, Social Interactions and Social Representation" - A Theoretical and Methodological Dialogue through research
- 2004** ITALY (Rome/Genazzano) 10th International Summer School: "Communication, Media and Social Representations" - Social influence and Communication in the new scenario of the information society: is it possible to change risk behaviour?
- 2005** ITALY (Rome) 11th International Summer School: "Applying the Facet Theory and Statistical Analysis via HUDAP software to Research on Social Representations: Computer Mediated Training Sessions, both Theoretical and Methodological"
- 2006** ITALY (Rome) 12th International Summer School: "Applying Dialogical Approaches and Conversational Analysis via Focus Groups to Research on Social Representations "
- 2007** ITALY (Rome) 13th International Summer School: "Structural Approach to Social Representations"
- 2008** ITALY (Rome) 14th International Summer School: "Social Representations, Collective Memory and Socially Shared Emotions: narrative and experimental approaches"
- 2009** ITALY (Rome) 15th International Summer School: "Cultural and cross-cultural approaches to Social Representations: the implications of the globalized/localized cultural scenarios"
- 2010** ITALY (Rome) 16th International Summer School: "Social Representations and Science"
- 2011** ITALY (Rome) 17th International Summer School: "Social Representations of Urban Places and Environment: Images, Memory and Identity"
- 2012** ITALY (Rome) 18th International Summer School: "Social Representations of Economics and Finance"
- 2013** ITALY (Rome) 19th International Summer School: "Intensive Training Sessions - Oktoberfest and People-IDP kick-off meeting and inaugural party "
- 2014** ITALY (Rome) 20th International Summer School: Genesis, development and actuality of the Social Representation theory in more than fifty years (1961-2011 and beyond): the main paradiqms and the "modelling approach"



The European Ph.D. on Social Representations and Communication International Lab Meetings So.Re.CoMEDIA & SOCIETY

at the European PhD on Social Representations & Communication Multimedia LAB & Research Center, Rome-Italy
in combination with Worldwide on-line connection points

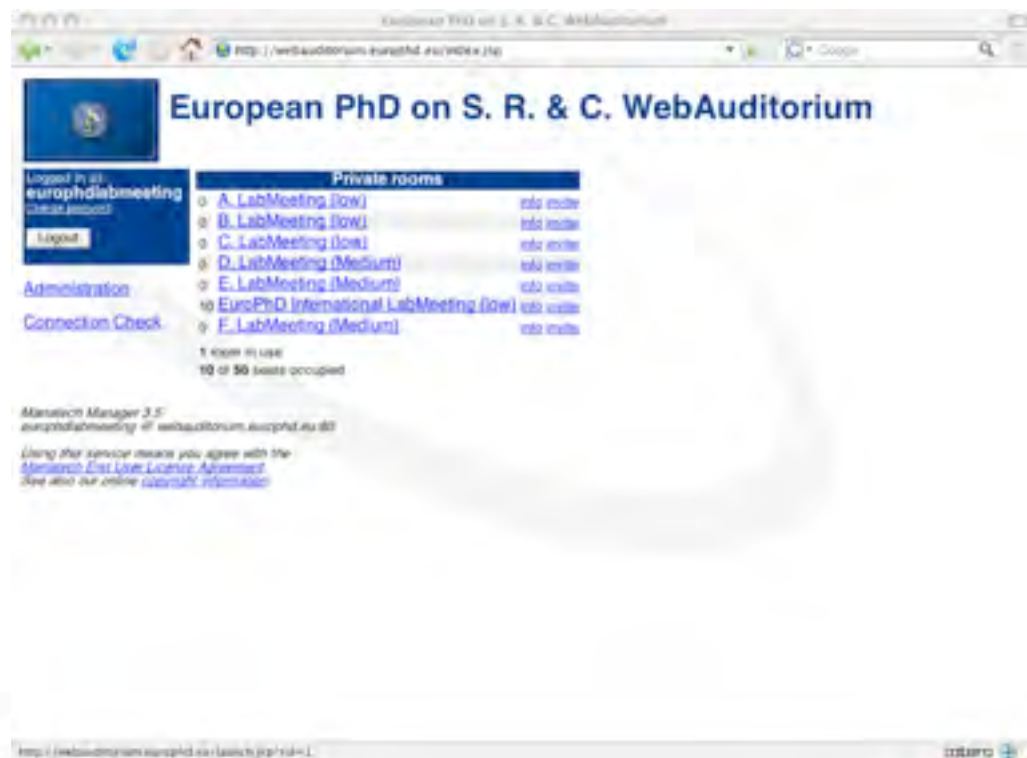


Winter 2005	1 st International Lab Meeting: "Virtual Group Training and Individual Supervision Relating to the Distant Cooperative Research Program aimed at the Meta-	
Spring 2005	2 nd International Lab Meeting: "Image-Based Research Methods for Analyzing Social Representations in action in different cultural contexts"	
Summer 2005	3 rd International Lab Meeting: "Applying the Facet Theory and Statistical Analysis via HUDAP software to Research on Social Representations: Theoretical and	
Winter 2006	4 th International Lab Meeting: "Training and Individual Supervision Relating to the Distant Cooperative Research Program aimed at the Meta-Theoretical Analysis	
Spring 2006	5 th International Lab Meeting: "Modeling and Positioning Approach in Research on Social Representations"	
Summer 2006	6 th International Lab Meeting: "Applying Dialogical Approaches and Conversational Analysis via Focus Groups to Research on Social Representations"	
Winter 2007	7 th International Lab Meeting: "Anthropological Approach to Social Representations and Qualitative Methods"	
Spring 2007	8 th International Lab Meeting: "Experimental Design in Investigating Social Representations and Influence Processes"	
Summer 2007	9 th International Lab Meeting: "Structural Approach to Social Representations & advanced courses on Analysis of Similarity and the Evoc statistical package"	
Winter 2008	10 th International Lab Meeting: "Developing Meta-Theoretical Approach to Social Representations Literature: the contribution of Italian Scholars belonging to	
Spring 2008	11 th International Lab Meeting: "Identity and Social Representations: Cultural and Mythical Dimensions"	
Summer 2008	12 th International Lab Meeting: "Social Representations, Collective Memory and Socially Shared Emotions: narrative and experimental approaches"	
Winter 2009	13 th International Lab Meeting: "Meta-theoretical Analysis of Social Representations Literature"	
Summer 2009	14 th International Lab Meeting: "Cultural & cross-cultural approaches to Social Representations: the implications of globalized/localized cultural scenarios"	
Winter 2010	15 th International Lab Meeting: "Meta-theoretical Analysis of Social Representations Literature"	
Summer 2010	16 th International Lab Meeting: "Social Representations and Science"	
Winter 2011	17 th International Lab Meeting: "Meta-theoretical Analysis of Social Representations Literature"	
Summer 2011	18 th International Lab Meeting: "Social Representations of Urban Places & Environment: Images, Memory and Identity"	
Winter 2012	19 th International Lab Meeting: "Meta-theoretical Analysis of Social Representations Literature"	
Summer 2012	20 th International Lab Meeting: "Social Representations, Economics and Finance"	
Winter 2013	21 st International Lab Meeting: "Meta-theoretical Analysis of Social Representations Literature" and Bibliometric Tools	
Summer 2013	22 nd International Lab Meeting: "Intensive Training Sessions - Oktoberfest and People-IDP kick-off meeting and inaugural party "	
Winter 2014	23 rd International Lab Meeting: "Meta-theoretical Analysis of Social Representations Literature" and Bibliometric Tools	
Spring 2014	24 th International Lab Meeting: "Environment facing societal challenges"	
Summer 2014	25 th International Lab Meeting: "Genesis, development and actuality of the Social Representation theory in more than fifty years (1961-2011 and beyond): the main paradigms and the "modelling approach"	



Each session of the European Ph.D. International Lab Meetings includes two pilot tests before the events start aimed at verifying and assessing in advance the technical abilities of each participant. It provides two full days of basic and advanced training on the use of Marratech's programs. This includes an interactive test of the skills acquired by participants. Experience shows that after these sessions, participants, including senior professors unfamiliar with new technologies, are quickly able to actively participate in the event. Their presence visually, in text chat, their voices and videos and their interactive use of the *white-board* is warmly welcomed by all participants.

Indeed, the *white-board* allows interactive use not only among participants from in and outside the lab, but is highly functional for sharing applications and software. For example, this allows us for to hold advanced training sessions and collaborative learning on statistical packages by using data files provided by each participant. It is also interesting to use the *white-board's* share screen both for the participants' presentations (they start by locating themselves on the globe with an arrow and fill in whatever they believe best represents their identities) and for the collective evaluation of the event, by writing comments and suggestions on the shared screen.





PARTICIPANTS	
Albania	6
Argentina	22
Australia	5
Austria	16
Belgium	4
Bosnia	1
Brazil	57
Bulgaria	11
Canada	10
Chile	7
China	22
Colombia	8
Cyprus	2
Czech	25
Estonia	6
Finland	20
France	125
Germany	19
Greece	20
Guatemala	1
Hungary	26
India	4
Indonesia	36
Israel	4
Italy	367
Lebanon	5
Macedonia	1
Malta	2
Mexico	31
Moldavia	8
Nepal	2
Netherlands	2
New Zealand	2
Nigeria	5
Pakistan	2
Palestine	8
Poland	51
Portugal	54
Romania	158
Russia	9
Serbia	11
Slovakia	24
Slovenia	3
Spain	23
Sweden	10
Switzerland	7
Tunisia	13
Turkey	12
Turkmenistan	2
Ukraine	17
UK	18
USA	16
Venezuela	13
Totale	1333

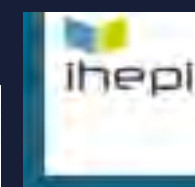
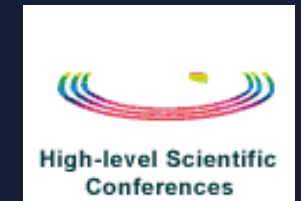
1333 participants from 53 countries
306 guest speakers from 24 countries



TEACHING STAFF	
America	6
Austria	10
Belgium	2
Brazil	7
Canada	2
China	4
Czech	5
Estonia	1
Finland	12
France	63
Germany	3
Greece	2
Hungary	2
Israel	7
Italy	71
Latvia	1
Mexico	1
Poland	6
Portugal	20
Romania	5
Spain	24
Sweden	18
Switzerland	8
UK	26
Totale	306



Institutional History of the and Recognition by



Fulbright Schuman Award

Marie Curie Actions

Marie Curie Actions



IDP

Innovative Doctoral Program

IDP



- The coordinator recruits all fellows.
- Maximum of 500 researcher months.
- Mandatory enrolment of researchers in a doctoral programme.
- 100% Early Stage Researchers; maximum recruitment of 36 months per researcher.



Call: FP7-PEOPLE-2013-ITN
Funding scheme: Initial Training Networks (ITN)
Proposal number: 607279
Proposal acronym: SoReComJointIDP
Duration (months): 48
Proposal title: The European Joint Doctorate on Social Representations and Communication: an innovative doctoral program in a networked international research training environment
Activity: SOC

N.	Proposer name	Country	Total Cost	%	Grant Requested	%
1	UNIVERSITA DEGLI STUDI DI ROMA LA SAPIENZA	IT	-	-	-	-
Total:			0		0	

Abstract:

Built on the experience of both the European PhD on Social Representations and Communication, awarding a recognised joint degree since 1996 (<http://www.europhd.eu>), and the EU approved So.Re.Com. THEmatic NETwork, this international joint doctoral programme includes 11 universities, 2 private companies and 1 public research institute in 8 European countries (AT, CH, CZ, ES, FR, IT, RO, SE), and 6 universities in United States, Canada, Brazil, Argentina, Mexico and China. The goal is to provide doctoral training in Social Representations and Communication, a supra-disciplinary research area of the social sciences that studies the social construction of everyday knowledge in social spheres and media, disseminating European excellence beyond the EU boundaries and attracting the best ESR from abroad. Structured into transnational teams by common research area and complementary multimethodological approaches, this SoReComJointIDP guarantees a well tested training structure including: a) an innovative integrated physical and virtual campus, where world-class academic scientists, internationally recognised experts, experienced researchers and ESR cooperate face-to face and on-line "for" and "by" research; b) multiple supervision via tutoring and co-tutoring by at least three tutors in different countries; c) individual mobility for ESR at research centres for secondments; d) collective international mobility of trainees and teaching staff during International Summer Schools and Lab meetings; e) learning by doing (including transferable skills) in academic and non academic settings; f) worldwide access to common web platform, as tool for documentation, networking, training and monitoring trainees' progress; g) high tech infrastructure and lab facilities; h) quality evaluation system; i) officialisation of the joint degree; l) active integration in the world-wide SoReCom THEmatic NETwork; m) enhancement of career prospects both in and outside academia

Evaluation Summary Report**Evaluation Result****Total score: 98.80% (Threshold: 70/100.00)**

Criterion 1 - S&T QUALITY

Score: **5.00** (Threshold: 3.00/5.00 , Weight: 0.30)

Strengths and Weaknesses

Strengths

- The research topic is clearly defined and the research objectives are well outlined in the proposed project.
- The proposal has a broad perspective and involves many aspects of social science.
- The proposal includes the interdisciplinary methodology to emerge supra-disciplinary fields.
- The research training programme and research methodology are clearly presented in the proposal.
- The originality of the proposal is evidently presented.
- The innovative contribution of the research training programme is presented in detail beyond the interdisciplinary approach.
- The proposal provides a wide and crucial participation of private and non-academic partners in the research and training activities.
- Contribution of private sector is distributed in the course of each sub-research programme.

Weaknesses

- There are no evident weaknesses under this criterion.

Overall comments

The scientific quality of the proposal is excellent.

Criterion 2 - TRAINING

Score: **5.00** (Threshold: 4.00/5.00 , Weight: 0.30)

Strengths and Weaknesses

Strengths

- The proposal clearly outlines training objectives.
- The proposed training programme structure is consistent with the training through research programme.
- There is a well-designed plan with monitoring structures, co-supervision, consisting of a supervisor from the academic and the non-academic institution.
- The timeliness and the training needs are clearly addressed in the proposal.
- A broad range of transferable skills and the presentation of the complementarities to create an innovative research environment are evidently specified.
- The proposal involves a well-designed, elaborated system of monitoring the ESRs progress.
- The secondments are well-designed, including the participation of non-academic partners.
- The contact of the researcher with the supervision in terms of frequency of meetings, guidance and advice is persuasively developed in the proposed project.
- Placement of researchers in associated non-academic partners is planned. The duration of the placement is reasonable. The content of training during this time is well defined.
- There is a good description of the combination of local specialist training with network-wide training activities.
- Early researchers and experienced researchers recruited will have a personal career development plan, which includes all requested aspects in line with the principles set out in the European Charter for Researchers and the Code of Conduct.

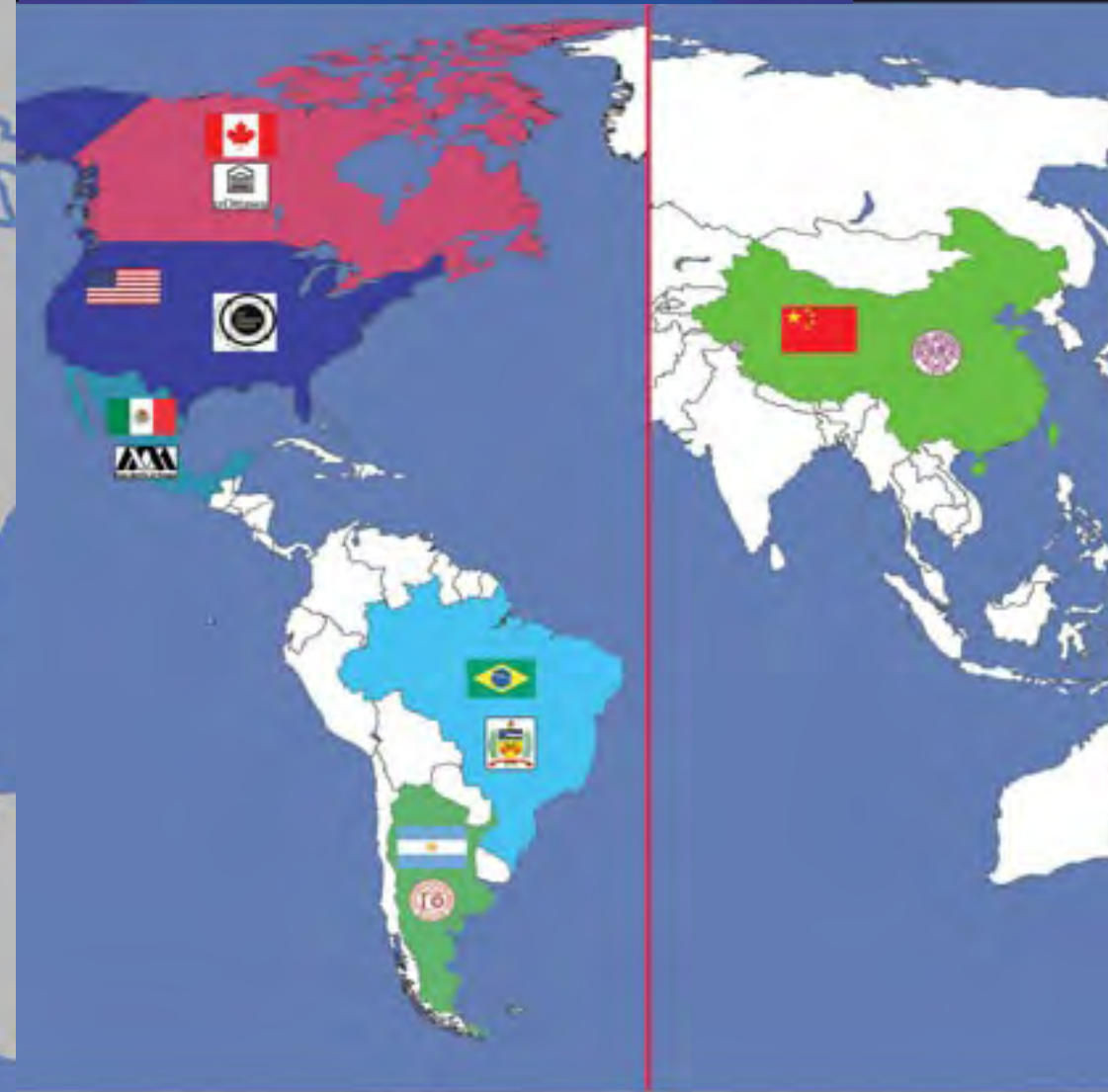
Weaknesses

- There are no evident weaknesses under this criterion

Overall comments


This proposal provides an excellent research training programme.

The SoReComJoint-IDP institutional network



Built on the experience of both the European PhD on Social Representations and Communication, awarding a recognized joint degree since 1996 (<http://www.europhd.eu>), and the EU approved So.Re.Com. THEmatic NETwork, this international joint doctoral programme includes:

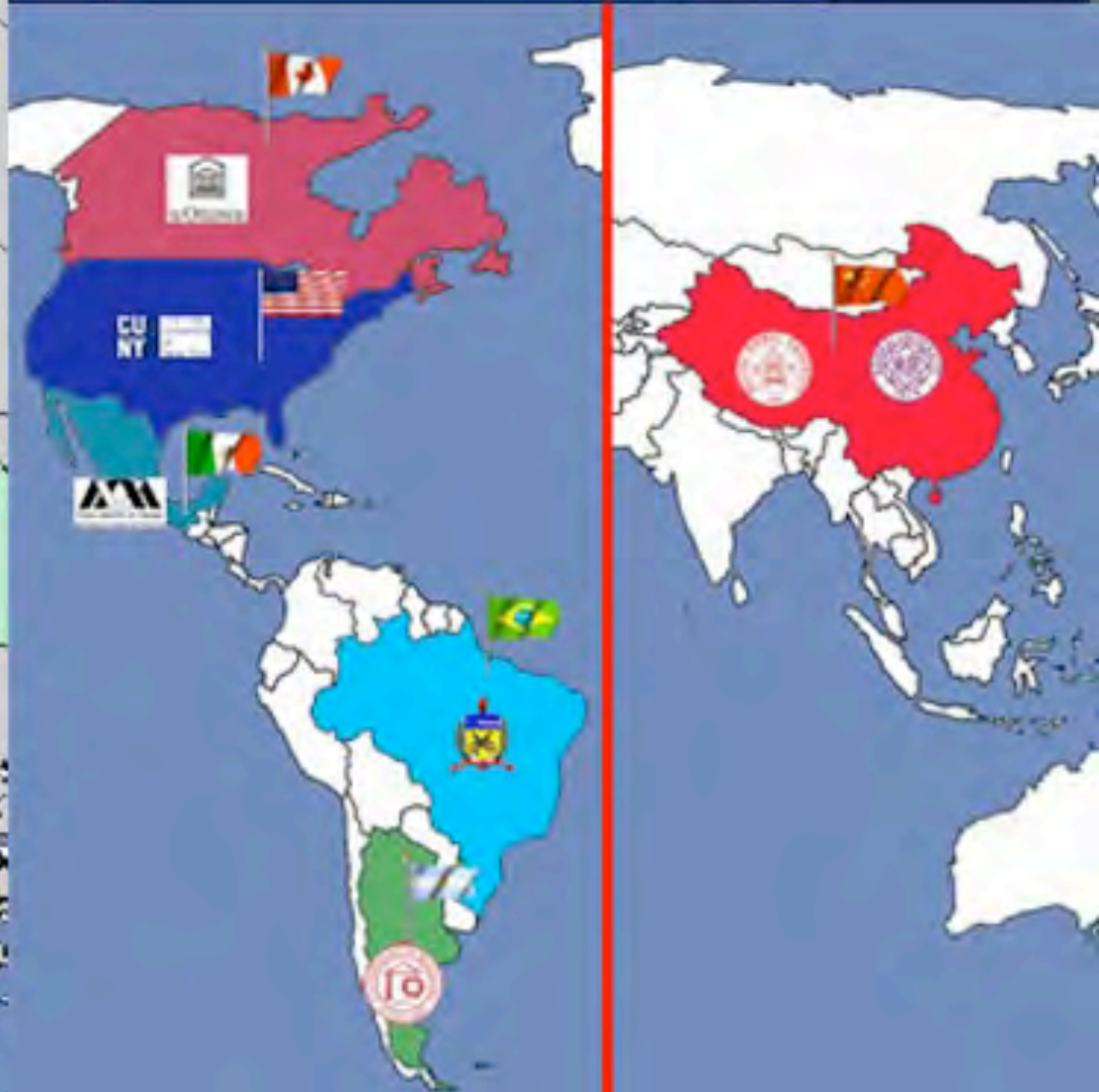
- **8 EU universities**
in 6 European Countries:
Austria, Czech Republic, Italy, Romania, Spain, Switzerland
- **6 extra-EU universities**
in United States, Canada, Brazil, Argentina, Mexico and China
- **2 private companies**
in Sweden and Italy
- **1 public research institute**
in France



**Network
Composition**

European PhD on Social Representations and Communication:

from European to world-wide institutional co-operation



Opening to Institutional Co-operation OUTSIDE THE ACADEMIC BORDERS

**Entrepreneurial Partners, Public Research Centre and Research Foundation
co-operating with the European Ph.D. on Social Representations and Communication**



RESEARCH FOUNDATIONS			
	F.M.S.H Paris http://www.msh-paris.fr		Fondation Maison des Sciences de l'Homme Sponsor for Scientific Activities and Meetings
PUBLIC RESEARCH INSTITUTES			
	IFSTTAR http://www.ifsttar.fr		French National Institute for Transport and Safety Research
ENTREPRENEURIAL PARTNERS			
	CONERI http://www.coneri.se		Technological Partner for e-learning
	EIKON http://www.eikoneurope.com		Commercial Partner for New Communication Tools
	ContattoLavoro s.r.l. http://www.contattolavoro.it/		Professional Partner for Personal Career Prospects
NETWORKS			
	EuroPACE Network of Universities and Enterprises http://www.europace.org		EuroPACE Partner for Telematic Applications

The So.Re.Com. Thematic Network of Excellence

the unique transnational Social Science “network of networks”

approved by



linking the
worldwide Scientific
Community inspired
by Social
Representations and
Communication
studies

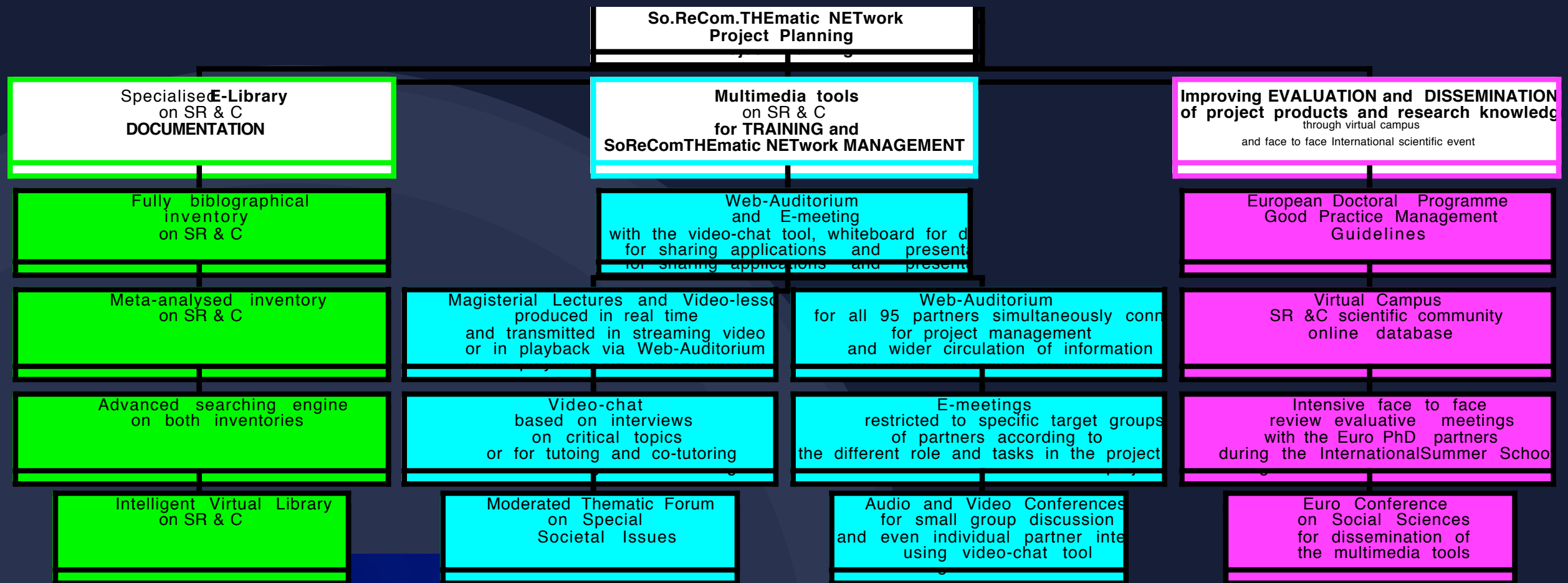




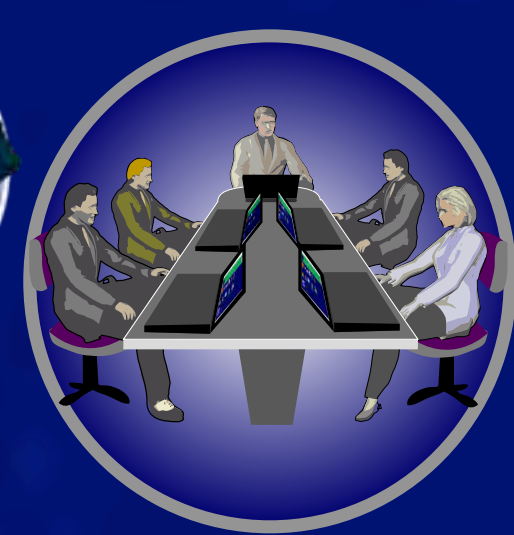
● The So.Re.Com.THEmatic NETwork ○ ● ● at a glance on global scenario



The So.Re.Com. Thematic Network of Excellence Outputs



The main research teams are:
(for more details click on the research team of your interest)



Team Thirteen
Risk, Social
Representations
and Community
Life

Team Twelve
Social Representations,
Community
and Health Applied Research

Team Eleven
Social
Representations, Advertising,
Marketing and Organizational
Contexts

Team Ten
Social
Representations
and Economy

Team Nine
Social
Representations
and
Environment

Team Eight
Family, Youth,
Communication,
Education and Social
Representations of
Institutional Policies

Team Seven Social
Representations
and Politics

Team Six
Identity and Social
Representations

Team Five
Collective Memory,
Emotions and Social
Representations

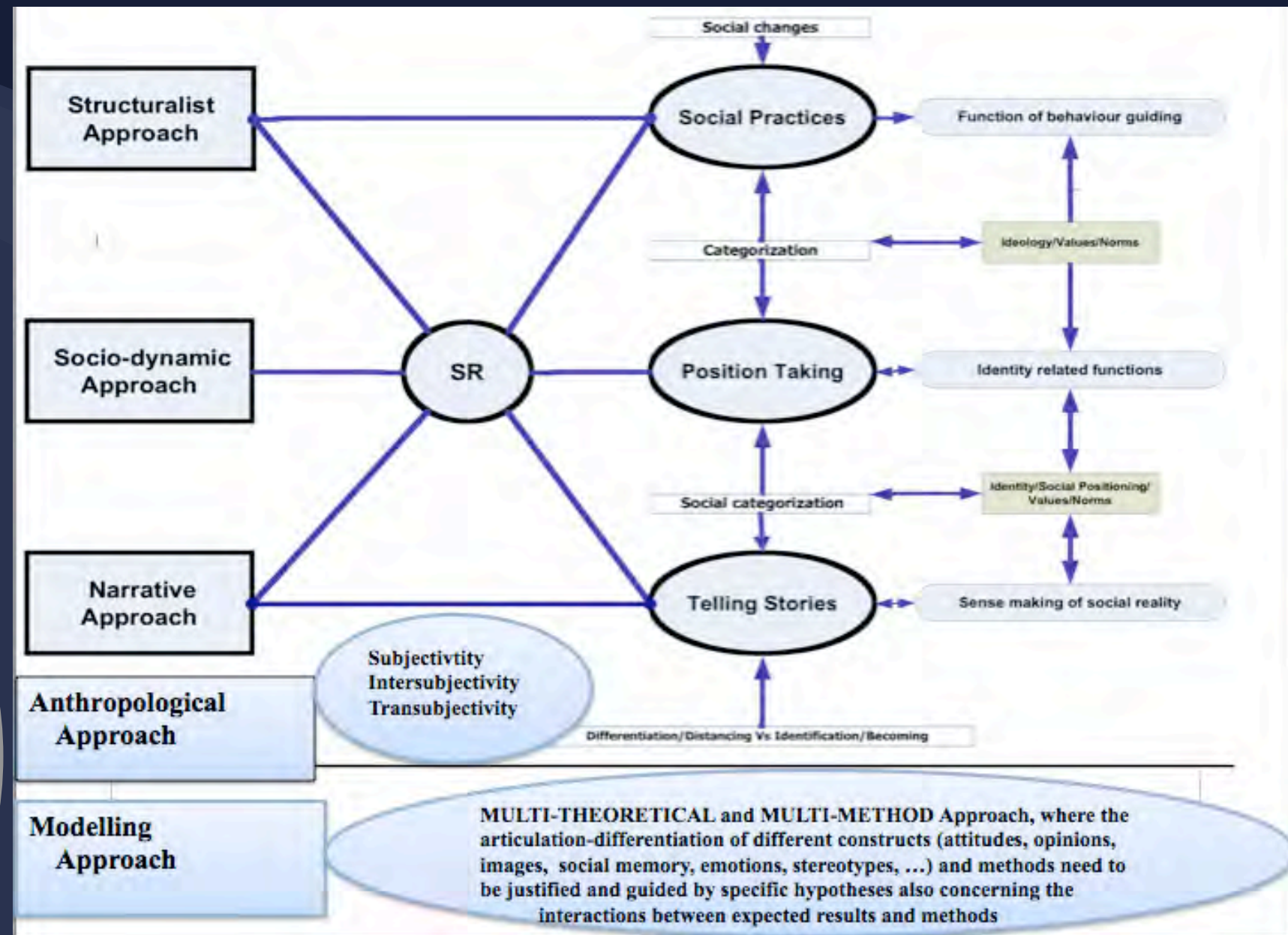
Team Four
Communication
Media and Social
Representations

Team Three
Culture,
Globalization and
Social
Representations

Team Two
Science and Social
Representations

Team One
Theoretical and
Methodological
Development
of the Social
Research Field

Social representation paradigms: one theory, different approaches and methods.

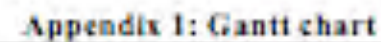


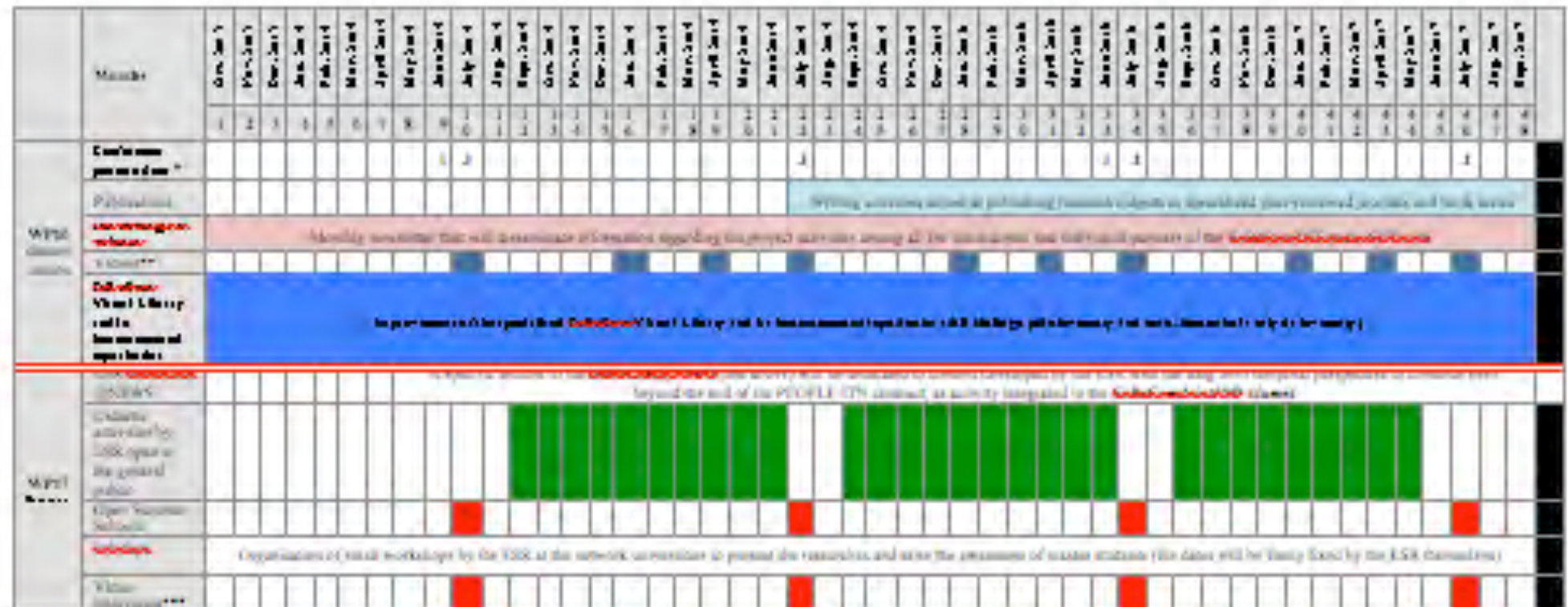
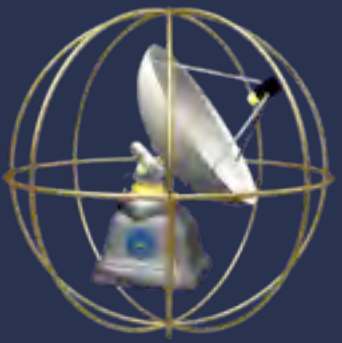
Quality Control and On-Line Monitoring System

Research trainee's Workplan chart and TIMELINE



3000

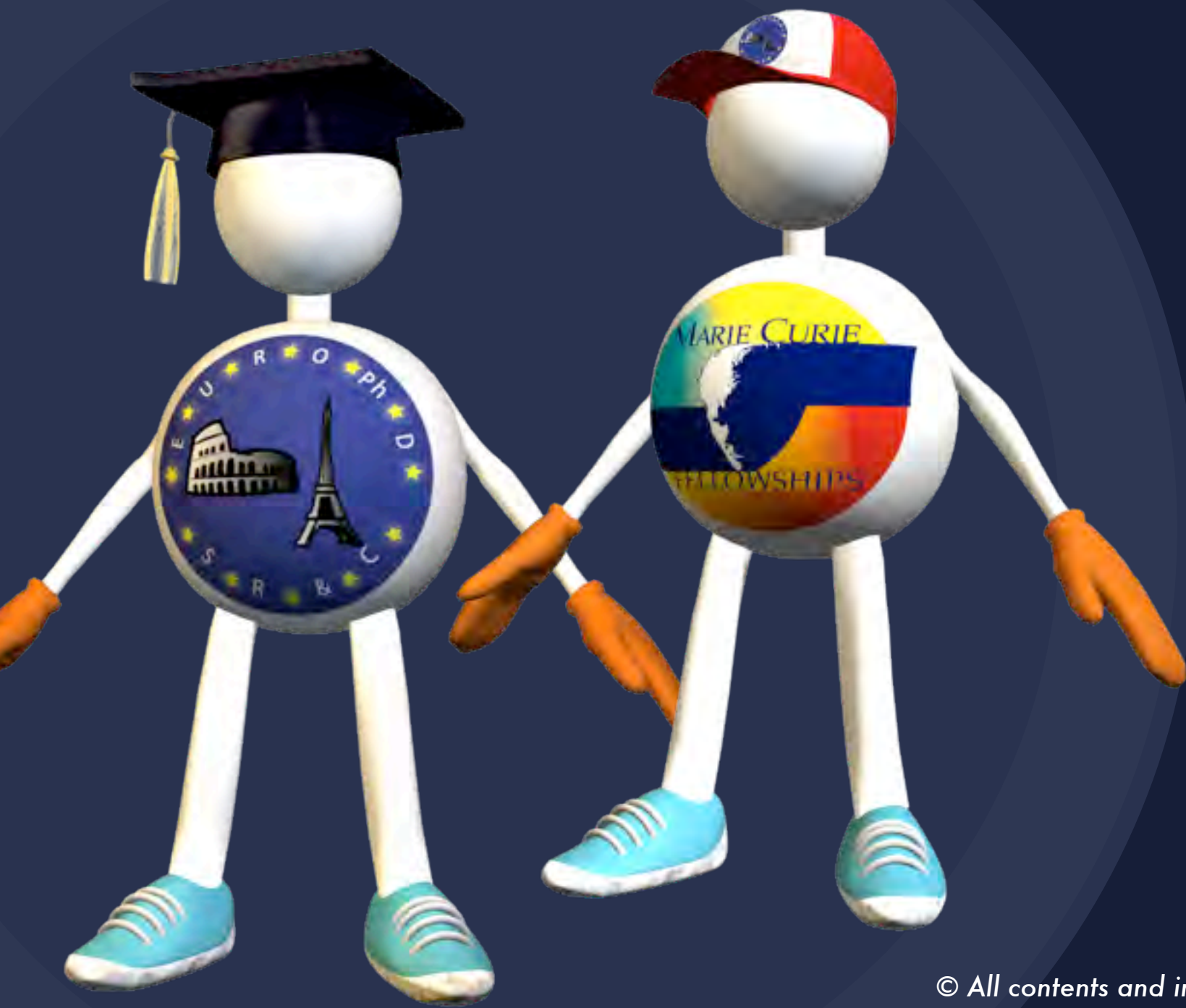




- *** The video interviews with each ESK (in which they describe their research, explain how it can benefit society, give their opinions on the programme, etc.) will be realized during each Summer School and will be published on the project's website and on a specific YouTube channel to ensure the widest possible dissemination.

2- **Biannual International Conference on Social Representations**

Thank you for your attention



annamaria.derosa@uniroma1.it

www.europhd.eu